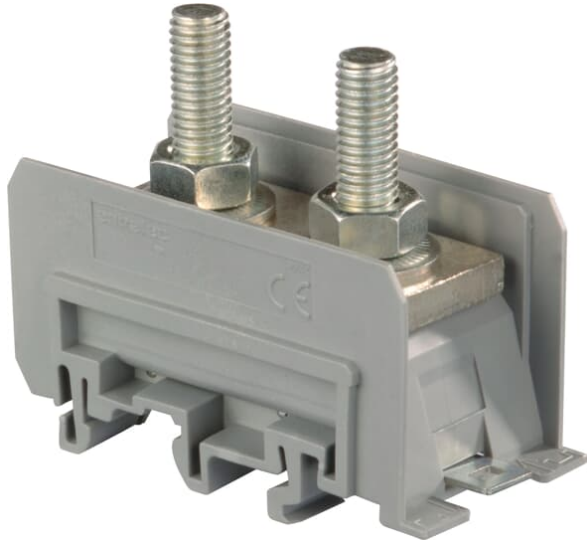


PRODUCT-DETAILS

M120/35.FF

M120/35.FF



General Information

Extended Product Type	M120/35.FF
Product ID	1SNA115146R1500
EAN	3472591151466
Catalog Description	M120/35.FF
Long Description	- Compact two stud terminal block, - Lug mounting in accordance with NF C 20-130 and DIN 46234, - Various marking options, - Rail or base mounting.

Ordering

Color	Grey
Minimum Order Quantity	10 piece
Customs Tariff Number	85369010

Popular Downloads

Data Sheet, Technical Information	1SNC160020C0201
Instructions and Manuals	1SNC160020C0201

Dimensions

Product Net Width	35 mm
-------------------	-------

Product Net Height	69 mm
Product Net Depth / Length	51 mm
Product Net Weight	130 g

Technical

Rated Cross-Section	70 mm ²
Spacing	35 mm
Connection Type	Stud
Function	Feed-through
Number of Levels	1
Connecting Capacity Main Circuit	Stud / Flexible 1x 2.5 ... 70 mm ² Stud / Rigid 1x 2.5 ... 70 mm ²
Rated Current (I _n)	Main Circuit 192 A
Rated Short-time Withstand Current (I _{cw})	for 1 s 8000 A
Rated Voltage (U _r)	1000 V
Pollution Degree	3
Insulation Material	Polyamide
Mounting on DIN Rail	G32 (32 x 15 mm Mounting Rail) acc. to IEC 60715 TH35-7.5 (35 x 7.5 mm Mounting Rail) acc. to IEC 60715 TH35-15 (35 x 15 mm Mounting Rail) acc. to IEC 60715
Tightening Torque	Cable Lug 12 N·m

Technical UL/CSA

Maximum Operating Voltage UL/CSA	Main Circuit 600 V
Connecting Capacity UL/CSA	Stranded 250 AWG

Environmental

Ambient Air Temperature	Operation -55 ... +110 °C Storage -55 ... +110 °C
RoHS Status	Following EU Directive 2011/65/EU

Certificates and Declarations (Document Number)

cUL Certificate	1SND165000A0203
Declaration of Conformity - CE	1SND225011U1000
EAC Certificate	1SND161009A1100
Environmental Information	1SND220022E1002
Instructions and Manuals	1SNC160020C0201
RoHS Information	1SND230022F0204

Classifications

Object Classification Code	X
ETIM 4	EC000897 - Feed-through terminal block
ETIM 5	EC000897 - Feed-through terminal block
ETIM 6	EC000897 - Feed-through terminal block

Container Information

Package Level 1 Units	10 piece
Package Level 1 Width	135 mm
Package Level 1 Depth / Length	175 mm
Package Level 1 Height	74 mm
Package Level 1 Gross Weight	1.3 kg
Package Level 1 EAN	3472591151466
Package Level 2 Units	80 piece
Package Level 2 Width	300 mm
Package Level 2 Depth / Length	500 mm
Package Level 2 Height	150 mm
Package Level 2 Gross Weight	10.4 kg
Package Level 3 Units	3840 piece

Categories

Low Voltage Products and Systems → Connection Devices → Terminal Blocks → Solution Series

