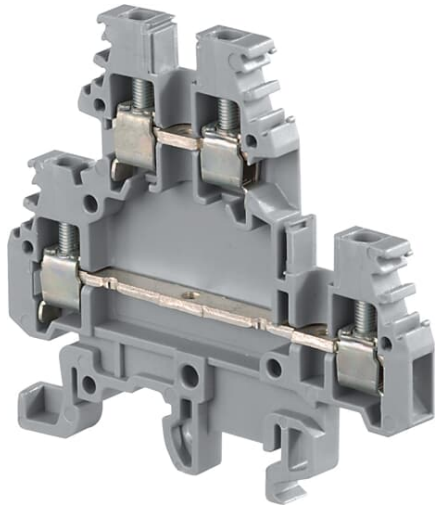


PRODUCT-DETAILS

MA2.5/5.D2

MA2.5/5.D2 Screw Clamp Terminal Blocks - Double deck - Grey



General Information

| | |
|-----------------------|---|
| Extended Product Type | MA2.5/5.D2 |
| Product ID | 1SNA115490R1300 |
| EAN | 3472591154900 |
| Catalog Description | MA2.5/5.D2 Screw Clamp Terminal Blocks - Double deck - Grey |
| Long Description | - Save space with double deck terminal blocks: 2 independent circuits connected in just 5 mm 0.200 in spacing, - Flexibility: snap onto symmetrical and asymmetrical rails. |

Ordering

| | |
|------------------------|----------|
| Color | Grey |
| Minimum Order Quantity | 50 piece |
| Customs Tariff Number | 85369010 |

Popular Downloads

| | |
|-----------------------------------|-----------------|
| Data Sheet, Technical Information | 1SNC160019C0202 |
| Instructions and Manuals | 1SNC160019C0202 |

Dimensions

| | |
|-------------------|------|
| Product Net Width | 5 mm |
|-------------------|------|

| | |
|----------------------------|---------|
| Product Net Height | 65.5 mm |
| Product Net Depth / Length | 52 mm |
| Product Net Weight | 15 g |

Technical

| | |
|---|--|
| Rated Cross-Section | 2.5 mm ² |
| Spacing | 5 mm |
| Connection Type | Screw Clamp |
| Function | Feed-through |
| Number of Levels | 2 |
| Connecting Capacity Main Circuit | Screw Clamp / Flexible 1x 0.22 ... 2.5 mm ² Screw Clamp / Rigid 1x 0.2 ... 4 mm ² |
| Gauge Type | A3 |
| Rated Current (I _n) | Main Circuit 24 A |
| Rated Short-time Withstand Current (I _{cw}) | for 1 s 300 A |
| Rated Voltage (U _r) | 630 V |
| Rated Impulse Withstand Voltage (U _{imp}) | 8000 V |
| Dielectric Test Voltage | 2500 V |
| Pollution Degree | 3 |
| Power Loss | 0.8 W |
| Degree of Protection | acc. to IEC 60529, IEC 60947-1, EN 60529 Main Terminals IP20 |
| Insulation Material | Polyamide |
| Mounting on DIN Rail | G32 (32 x 15 mm Mounting Rail) acc. to IEC 60715 TH35-7.5 (35 x 7.5 mm Mounting Rail) acc. to IEC 60715 TH35-15 (35 x 15 mm Mounting Rail) acc. to IEC 60715 |
| Wire Stripping Length | 9.0 mm |
| Recommended Screw Driver | 3.5 mm |
| Tightening Torque | acc. IEC 60947-1 0.4 N·m Manufacturer 0.6 N·m |

Technical UL/CSA

| | |
|---|--|
| Maximum Operating Voltage UL/CSA | Main Circuit 300 V |
| Connecting Capacity Main Circuit UL/CSA | Screw Clamp / Rigid 1x 22 ... 12 AWG |
| Connecting Capacity UL/CSA | Screw Clamp / Rigid 22 ... 12 AWG Stranded 12 AWG |
| Flammability According to UL94 | V-0 |

Environmental

| | |
|-------------------------|---|
| Ambient Air Temperature | Operation -55 ... +110 °C Storage -55 ... +110 °C |
| RoHS Status | Following EU Directive 2002/95/EC August 18, 2005 and amendment |

Certificates and Declarations (Document Number)

| | |
|--------------------------------|-----------------|
| cUL Certificate | 1SND161000A0203 |
| Declaration of Conformity - CE | 1SND225014U1000 |

| | |
|---------------------------|-----------------|
| EAC Certificate | 1SND161009A1100 |
| Environmental Information | 1SND220002E1002 |
| Instructions and Manuals | 1SNC160019C0202 |
| RMRS Certificate | 1SND161007A1101 |
| RoHS Information | 1SND230023F0208 |

Classifications

| | | |
|----------------------------|--|---|
| Object Classification Code | | X |
| ETIM 4 | EC000897 - Feed-through terminal block | |
| ETIM 5 | EC000897 - Feed-through terminal block | |
| ETIM 6 | EC000897 - Feed-through terminal block | |

Container Information

| | |
|--------------------------------|---------------|
| Package Level 1 Units | 50 piece |
| Package Level 1 Width | 126 mm |
| Package Level 1 Depth / Length | 155 mm |
| Package Level 1 Height | 64 mm |
| Package Level 1 Gross Weight | 0.75 kg |
| Package Level 1 EAN | 3472591154900 |
| Package Level 2 Units | 500 piece |
| Package Level 2 Width | 300 mm |
| Package Level 2 Depth / Length | 500 mm |
| Package Level 2 Height | 150 mm |
| Package Level 2 Gross Weight | 7.5 kg |
| Package Level 3 Units | 24000 piece |

Categories

Low Voltage Products and Systems → Connection Devices → Terminal Blocks → SNA Series

