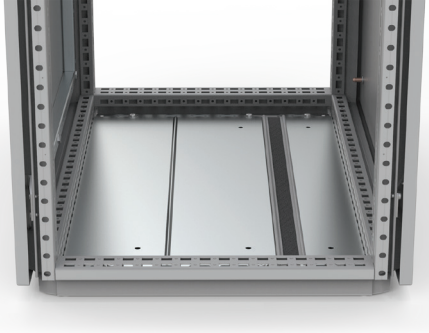


SCE

Section profiles for cable entry



Description: For sealing the cable entry between gland plates. Forms a tight seal around cables and fills gaps to prevent dust from entering. The foam is pre-fitted in the section profile that can be easily mounted in the bottom plates thanks to its click-in fixing solution. An alternative to the bottom late gasket kit BG01.

Material: Extruded PVC section profile. Gasket: adhesive foam with cross-section of 30 x 25 mm.

Pack quantity: 1 set consisting of 2 click-in section profiles with foam rubber.

For enclosure	
W	Item no.
600	SCE600
800	SCE800
1000	SCE1000
1200	SCE1200