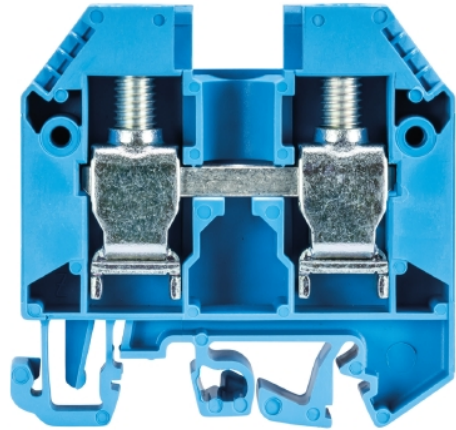


## Data sheet

Commercial Art.No.: 57.516.0155.6

Feed-through terminal WKN16 / U BL / V0

Feed-through terminal with Screw connection for mounting on TS 35/ TS 32, nominal cross section: 16 mm<sup>2</sup>, width: 12 mm, color: blue



Commercial Art.No.	57.516.0155.6
EAN	4015573488007
Order Unit	50

Certificates / Approvals



**CAN-Ex**



**ATEX**



**USA-Ex**

## Technical data

### General

Nominal cross section	16 mm <sup>2</sup>
Color	Blue
Number of levels	1
Number of clamp positions per level	2
Width/grid dimension	12 mm
Insulating housing	PA666
Inflammability class of insulation material acc. with UL94	V0
Explosion-tested version "Ex e"	yes
Mounting method	DIN rail (top hat rail)/G-rail
Terminal blocks for electrical installations	No

### Technical data

Rated current	71 A
Rated voltage	1000 V
Rated impulse voltage	8 kV
Pollution degree	3
Closing plate required	yes
Type of insulation material	Thermoplastic
Length	59.3 mm

### Connection Data

Connection type 1	screw connection
-------------------	------------------

Connection type 2	screw connection
Minimum cross section solid	1.5 mm <sup>2</sup>
Maximum cross section solid	25 mm <sup>2</sup>
Minimum cross section fine stranded	4 mm <sup>2</sup>
Maximum cross section fine stranded	16 mm <sup>2</sup>
Minimum cross section stranded	16 mm <sup>2</sup>
Maximum cross section stranded	25 mm <sup>2</sup>
Wire strip length	15 mm
Torque conductor mounting	2.5 Nm

#### Technical Data UL/CSA

Cross section UL	12-4 AWG
Voltage UL	600 V
Current factory wiring	90 A
Current field wiring	85 A
Cross section CSA	14-4 AWG
Voltage CSA	600 V
Current CSA	95 A

#### Classification

ECLASS 11	
ECLASS 8.1	27141120
ETIM 7.0	EC000897
ETIM 6.0	EC000897
ETIM 5.0	EC000897
ETIM 4.0	EC000897
ETIM 3.0	EC000897

#### Product compliance

ROHS conformity status	Compliant
REACH-SVHC conformity status	Compliant

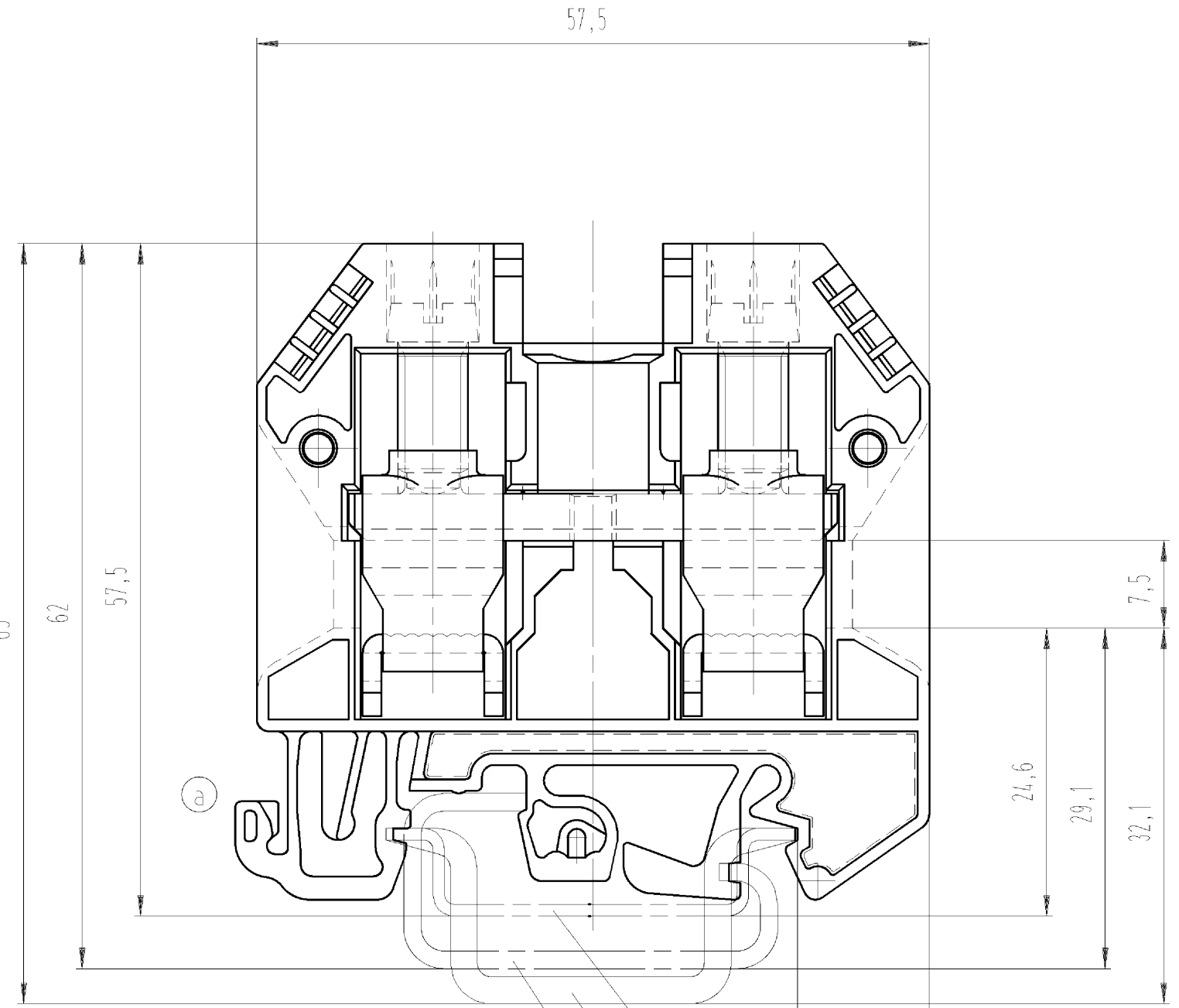
#### Accessories

Commercial Art.No.:	Article-type description:	Description:
Z7.284.2227.0	Insulated jumper bar IVBWKN16 - 2	Cross connector, insulated for DIN rail terminal blocks type WKN ..., 2 - pole
Z7.284.2327.0	Insulated jumper bar IVBWKN16 - 3	Cross connector, insulated for DIN rail terminal blocks type WKN ..., 3 - pole
Z7.284.2427.0	Insulated jumper bar IVBWKN16 - 4	Cross connector, insulated for DIN rail terminal blocks type WKN ..., 4 - pole
Z7.284.2527.0	Insulated jumper bar IVBWKN16 - 5	Cross connector, insulated for DIN rail terminal blocks type WKN ..., 5 - pole
Z7.284.2627.0	Insulated jumper bar IVBWKN16 - 6	Cross connector, insulated for DIN rail terminal blocks type WKN ..., 6 - pole
Z7.284.2727.0	Insulated jumper bar IVBWKN16 - 7	Cross connector, insulated for DIN rail terminal blocks type WKN ..., 7 - pole
Z7.284.2827.0	Insulated jumper bar IVBWKN16 - 8	Cross connector, insulated for DIN rail terminal blocks type WKN ..., 8 - pole
Z7.284.2927.0	Insulated jumper bar IVBWKN16 - 9	Cross connector, insulated for DIN rail terminal blocks type WKN ..., 9 - pole

Z7.284.3027.0	Insulated jumper bar IVBWKN16 -10	Cross connector, insulated for DIN rail terminal blocks type WKN ..., 10 -pole
Z7.284.3127.0	Insulated jumper bar IVBWKN16 -11	Cross connector, insulated for DIN rail terminal blocks type WKN ..., 11 -pole
Z7.284.3227.0	Insulated jumper bar IVBWKN16 -12	Cross connector, insulated for DIN rail terminal blocks type WKN ..., 12 -pole
98.190.0000.0	Mounting rail TS 32 UNPERF - l:2000mm	Mounting rail G 32, unslotted, Höhe 5,5 mm, length 2 m, material steel. galv. zinc-plated and passivated
98.190.1000.0	Mounting rail TS 32 PERF 15mm - l:2000mm	Mounting rail G 32, slotted, Höhe 15 mm, length 2 m, material steel. galv. zinc-plated and passivated
98.210.0000.0	Mounting rail TS 32 UNPERF AL - l:2000mm	Mounting rail G 32, unslotted, Höhe 15 mm, length 2 m, material Aluminium
98.220.0000.0	Mounting rail TS 32 UNPERF CU - l:2000mm	Mounting rail G 32, unslotted, Höhe 15 mm, length 2 m, material E copper
98.300.0000.0	Mounting rail TS 35x7,5 UNPERF - l:2000mm	Mounting rail TS 35, unslotted, size 7,5 mm, length 2 m, material steel. galv. zinc-plated and passivated
98.300.1000.0	Mounting rail TS 35x7,5 PERF 15mm - l:2000mm	Mounting rail TS 35, slotted, size 7,5 mm, length 2 m, material steel. galv. zinc-plated and passivated
98.300.1900.0	Mounting rail TS 35x7,5 PERF 25mm - l:2000mm	Mounting rail TS 35, slotted, size 7,5 mm, length 2 m, material steel. galv. zinc-plated and passivated
98.360.0000.0	Mounting rail TS 35x15-2,3 UNPERF - l:2000mm	Mounting rail TS 35, unslotted, size 15 mm, length 2 m, material steel. galv. zinc-plated and passivated
98.360.0004.0	Mounting rail TS 35x15-2,3 UNPERF FZN - l:2000mm	Mounting rail TS 35, unslotted, size 15 mm, length 2 m, material steel, hot galvanized
98.370.0000.0	Mounting rail TS 35x15 UNPERF - l:2000mm	Mounting rail TS 35, unslotted, size 15 mm, length 2 m, material steel. galv. zinc-plated and dichromated
98.370.1000.0	Mounting rail TS 35x15 PERF 15mm - l:2000mm	Mounting rail TS 35, slotted, size 15 mm, length 2 m, material steel. galv. zinc-plated and passivated
98.380.0000.0	Mounting rail TS 35x15-2,3 UNPERF CU - l:2000mm	Mounting rail TS 35, unslotted, size 15 mm, length 2 m, material E copper
07.311.6755.0	End plate APN 16 /V0	End plate for DIN rail terminal blocks type WKN 16..., color: grey
07.311.7755.0	Partition TWN 16 /V0	Partition for DIN rail terminal blocks type WKN 16..., color: grey

These dimensions will be especially checked at delivery  
 Only inspection dimensions  
 With /E marked dimensions are only valid for internal use

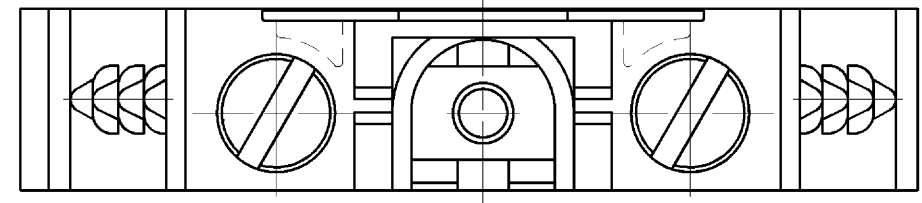
Diese Maße werden bei Abnahme besonders geprüft  
 Ausschließlich Prüfmaße  
 Mit /E gekennzeichnete Maße sind nur für interne Zwecke gültig



Hutschiene EN 60715-35x7,5  
 mounting rail EN 60715-35x7,5

Hutschiene EN 60715-35x15  
 mounting rail EN 60715-35x15

G-Schiene EN 60715-G32  
 G-rail EN 60715-G32



Weitere Daten siehe Katalog  
 further data see catalog

Teile - Nr. part-number	Farbe colour	Typ type
57.516.0155.0	grau/grey	WKN 16/U/VO
57.516.0155.1	schwarz/black	WKN 16/U SCHWARZ/VO
57.516.0155.2	weiß/white	WKN 16/U WEISS/VO
57.516.0155.3	schiefergrau/stone grey	WKN 16/U SCHIEFERGRAU/VO
57.516.0155.5	rot/red	WKN 16/U ROT/VO
57.516.0155.6	blau/blue	WKN 16/U BLAU/VO
57.516.0155.7	grün/green	WKN 16/U Grün/VO
57.516.0155.8	gelb/yellow	WKN 16/U GELB/VO
57.516.0155.9	orange	WKN 16/U ORANGE/VO
* 57.516.0195.0	grau/grey	WKN 16/U/VO
* 57.516.0195.6	blau/blue	WKN 16/U BLAU/VO

\* spezielle Verpackung  
 specific package

Tolerierung nach DIN 7167/Tolerance system acc. to DIN 7167.  
 (This DIN-standard describes the envelope principle. According to the envelope principle the deviations of form and parallelism are limited by the size tolerances).

ja/yes  Stoffverbots- und Deklarationsliste nach UU-TOM-05/03 ist einzuhalten.  
 Conformity with Wieland document UU-TOM-05/03 (list of prohibited / declarable hazardous substances) to be declared!

Freitoleranz nach General tolerance	CAD - Zeichnung, keine manuellen Änderungen CAD - drawing, no manual modifications allowed	1. Verwendung: First Use:	Blatt: 1 von 1 Sheet: of 1
	Werkstoff/Material	2004 Tag/Date Name	Zeichnung Nr./Drawing No.
		gezeichnet/drawn 27.09. geprüft/checked - Normgepr. Stand. check -	T 57.516.0155.0 01K b
	Maßstab/Scale		Index
	Vol. mm <sup>3</sup> Ofl./Surf. mm <sup>2</sup>	Ersatz für/Replacement for: -	Maße in mm/Dimensions are in mm
b 07.04.2011/ a 18.10.2006/ Index Datum / Blatt Date / Sheet	<b>wieland</b> Elektrische Verbindungen	Type	Benennung/Tittle <b>DURCHGANGSKLEMME</b> Modular terminal
Änderung/Revision			

Weitergabe sowie Vervielfältigung dieses Dokuments, Verwertung und Mitteilung seines Inhalts sind verboten, soweit nicht ausdrücklich gestattet.  
 The reproduction, distribution and utilization of this document as well as the communication of its contents to others without express authorization is prohibited.

575160155001K\_2 CADW2035 Schmitt: 2011-04-08T11:36:54 1.000