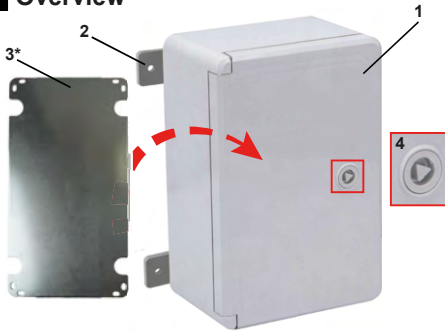


WDB

ARMARIOS ESTANCOS DE ABS. IP65-IK10 ABS WATERTIGHTS BOXES. IP65-IK10 COFFRETS ÉTANCHES ABS. IP65-IK10 CAIXAS ESTANQUES ABS. IP65-IK10

1 Overview



*ACCESORIO NO INCLUIDO

2 Warning:

The installation, service and maintenance of electrical equipment can only be carried out by an authorized person.

3 Description:

- Surface cabinet. IP65 and IK10
- Thermoplastic material.
- With protection against UV rays.
- Opaque or transparent door.
- 1 -Door.
- 2 -Fixing to the wall by means of supports.
- 3* -With the possibility of an internal metallic plate (accessory not included).
- 4 -Key or handle with triangular insert.

4 Characteristics:

*ACCESSORY
 NOT INCLUDED

Plastic Door Enclosures - Grey Door

WDB

IP65, ABS, temperature range -35°C - 65°C, external fixing brackets, mounting plate and locking key included.



WDB 8

WDB 6

WDB 3

WDB 1

Type	Colour	Code	Size (mm)	Qty
WDB 1		50107049	300 x 200 x 130	1
WDB 2		50107050	350 x 250 x 150	1
WDB 3		50107051	400 x 300 x 170	1
WDB 4		50107052	400 x 300 x 220	1
WDB 5		50107053	500 x 350 x 190	1
WDB 6		50107054	500 x 400 x 240	1
WDB 7		50107055	600 x 400 x 200	1
WDB 8		50107063	700 x 500 x 250	1
WDB 9		50107064	800 x 600 x 260	1

Plastic Door Enclosures - Transparent Door

WDB T

IP65, ABS - door polycarbonate, temperature range -35°C - 65°C, external fixing brackets, mounting plate and locking key included.



WDB T8




WDB T6

WDB T3

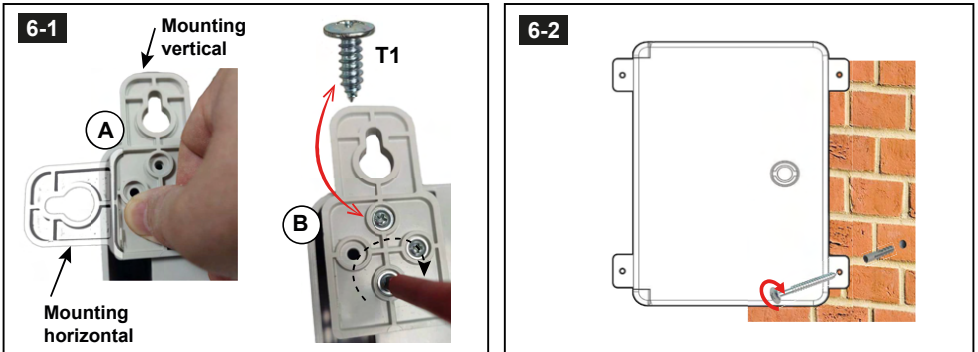
WDB T1

Type	Colour	Code	Size (mm)	Qty
WDB T1	Clear	50107056	300 x 200 x 130	1
WDB T2	Clear	50107057	350 x 250 x 150	1
WDB T3	Clear	50107058	400 x 300 x 170	1
WDB T4	Clear	50107059	400 x 300 x 220	1
WDB T5	Clear	50107060	500 x 350 x 190	1
WDB T6	Clear	50107061	500 x 400 x 240	1
WDB T7	Clear	50107062	600 x 400 x 200	1
WDB T8	Clear	50107065	700 x 500 x 250	1
WDB T9	Clear	50107066	800 x 600 x 260	1

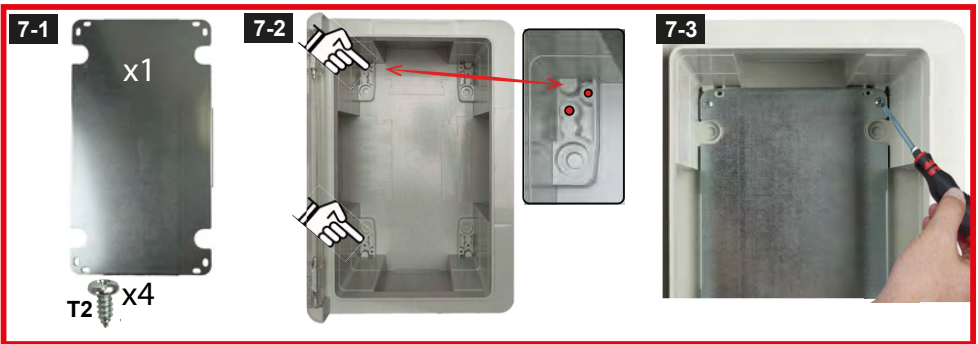
5 Components included in each reference:

BOLSA DE COMPONENTES	SOP3	T1	Key
			
BOLSA	x4	x12	x1

6 Wall fixing with external supports:



7 Metal plate fixing (ACCESSORY NOT INCLUDED IN THE BOX):



8 Safety and usage tips:



9 Technical information:

- Thermal classification Ha.
- Temperature during installation -25°C to +60°C
- Working temperature -40°C to +80°C
- GWT 650°C



IK10 IP65

10 Management of packaging and product waste:

RESIDUOS DE ENVASE				RESIDUOS DE PRODUCTOS		
MATERIAL	DEPOSITAR EN:	LOGOTIPO EN ESPAÑA	LOGOTIPO INTERNACIONAL	RESIDUOS	DEPOSITAR EN:	LOGOTIPO
PLÁSTICO	CONTENEDOR AMARILLO			NO RAEE	ECOPARQUE MUNICIPAL	
PAPEL Y CARTÓN	CONTENEDOR AZUL					

NOTE: The color of the containers may vary depending on the country where it is applied. Consult local regulations in this regard.

Instructions for use and safety

ENGLISH

- General view: *ACCESSORY NOT INCLUDED
- Warning:
Installation, service and maintenance of the electrical equipment may be carried out by an authorized person only.
- Description:
-Surface cabinet. IP65 and IK10; - Thermoplastic material.; - With UV protection; - Opaque or transparent door; 1 -Door.; 2 * -Fixing to the wall using brackets.; 3* With the possibility of an internal metal plate (accessory not included). 4 -Key or handle with triangular insert.
- Characteristics:
(table 1) opaque door multibox cabinets. External dimensions (mm); width; tall; depth; accessories; *metal plates.
(table 2) transparent door multibox cabinets. External dimensions (mm); width; tall; depth; accessories; *metal plates.
- Components included in each reference: (table) Component bags; SOP3; handle; bag.
- Wall fixing with external supports: 6-1Vertical mounting; horizontal mounting
- Wall fixing with internal holes (accessory not included in the box):
- Safety and usage tips.
- Technical information: - Thermal classification Ha; - Temperature during installation -25°C to + 60°C;
- Working temperature -40°C to + 80°C
- Management of packaging and product waste: PACKAGING WASTE; MATERIAL: PLASTIC; PAPER AND PAPERBOARD; DEPOSIT IN: (NOTE); LOGO IN SPAIN; INTERNATIONAL LOGO (NOTE); PRODUCT WASTE; WASTE; NO WEEE; DEPOSIT IN: LOCAL RECYCLING CENTER; LOGO.
NOTE: The color of the containers may vary depending on the country where it is applied. Check local regulations on this.

Halogen Free

Mode d'emploi et de sécurité

FRANÇAIS

- Vue d'ensemble:*ACCESSOIRE NON INCLUS
- Avertissement:
Installation, entretien et maintenance des équipements électriques ne peuvent être effectués par une personne autorisée.
- La description: - Armoire de surface. IP65 et IK10; - Matériau thermoplastique.; - Avec protection contre les rayons UV.; - Porte opaque ou transparente.; 1 -Porte.; 2 -Fixation au mur au moyen de supports.; 3* Avec possibilité de plaque métallique interne (accessoire non inclus).; 4 - Clé ou poignée avec insert triangulaire.
- Caractéristiques :
(tableau 1) armoires multibox portes opaques. Dimensions extérieures (mm) ; largeur; haut; Profond; accessoires; *des plaques métalliques.
(tableau 2) armoires multibox portes transparentes. Dimensions extérieures (mm) ; largeur; haut; Profond; accessoires; *des plaques métalliques.
- Composants inclus dans chaque référence :
(tableau) Sacs de composants ; SOP3 ; clé ; sac.
- Fixation murale avec supports externes : 6-1Montage vertical ; montage horizontal.
- Fixation de la plaque métallique : 8-2 Couvercle intérieur ; Plaque frontale supérieure.
- Des conseils et de l'utilisation de sécurité.
- Informations techniques : - Classification thermique Ha ; - Température lors de l'installation -25°C à +60°C
- Température de fonctionnement -40°C à +80°C.
- Gestion des emballages et des déchets de produits: DÉCHETS DES CONTENEURS; MATÉRIEL; PLASTIQUE; PAPIER ET CARTON; DÉPÔT EN: (REMARQUE); LOGO EN ESPAGNE; LOGO INTERNATIONAL (REMARQUE); DÉCHETS DE PRODUITS; DÉCHETS; PAS DE DEEE; DÉPÔT EN: CENTRE DE RECYCLAGE LOCAL; LOGO. REMARQUE: la couleur des contenants peut varier en fonction du pays où elle est appliquée. Vérifiez les réglementations locales à ce sujet.

Sans Halogène.

Instruções de utilização e segurança

PORTUGUÊS

- Visão geral: *ACESSÓRIO NÃO INCLUSO.
- Aviso: A instalação, serviço e manutenção do equipamento elétrico podem ser realizados apenas por uma pessoa autorizada.

- 3** Descrição: - Armário de superfície. IP65 e IK10; - Material termoplástico.; - Com proteção contra raios UV.; - Porta opaca ou transparente.; 1 - Porta.; 2 - Fixação à parede por meio de suportes.; 3* Com possibilidade de placa metálica interna (acessório não incluso).; 4 - Chave ou puxador com inserção triangular.
- 4** Características:
(tabela 1) armários multibox de porta opaca. Dimensões externas (mm); largura; alta; profundo; acessórios; *placas metálicas.
(tabela 2) armários multibox de porta transparente. Dimensões externas (mm); largura; alta; profundo; acessórios; *placas metálicas.
- 5** Componentes incluídos em cada referência:
(tabela) Sacos de componentes; SOP3; lidar com; sacola.
- 6** Fixação mural com suportes externos: 6-1Montagem vertical; Montagem horizontal.
- 7** Fixação na parede com furos internos (acessório não incluso na caixa):
- 8** Dicas de segurança e uso.
- 9** Informações técnicas: - Classificação térmica Ha; - Temperatura durante a instalação -25°C a + 60°C; Halogênio livre.
- Temperatura de trabalho -40°C a + 80°C.
- 10** Gestão de embalagens e resíduos de produtos: RESÍDUOS DE RECIPIENTES; MATERIAL; PLÁSTICO; PAPEL E CARTÃO; DEPÓSITO EM: (NOTA); LOGO NA ESPANHA; LOGOTIPO INTERNACIONAL (NOTA); RESÍDUOS DE PRODUTOS; DESPERDÍCIO; SEM REEE; DEPÓSITO EM: CENTRO LOCAL DE RECICLAGEM; LOGOTIPO.
NOTA: A cor dos recipientes pode variar dependendo do país onde é aplicado. Verifique os regulamentos locais sobre isso.