

MBJ GROUNDING AND BONDING BRAID, TINNED COPPER



MBJ Grounding and Bonding Braids are a reliable and convenient grounding solution for applications that require flexibility and durability. The tinned copper ground braids with massivated palms come ready to install without any additional cutting, stripping, crimping or punching and do not require the addition of tin or crimped lugs. The proprietary manufacturing process optimizes the electrical contact between each wire and helps eliminate moisture issues in the palms, preventing corrosion and lengthening the useful life of the braid.

CERTIFICATIONS



FEATURES

Complete range of earth/ground flexible connections from 6 - 100 mm² (11.84 - 197.35 kcmil) cross section and from 100 - 500 mm (3.937" - 19.685") length

Integral palm, without tin or crimped lugs for superior electrical contact and tensile strength resistance

Resistant to vibration and fatigue, reducing maintenance

Provides weight savings, material savings and lower impedance when compared to similar lugged cables with insulation

Ready to use out of the box, eliminates the need for cutting, stripping, crimping and punching

Quick and easy to install

Recommended by the EMC/EMI directives and less impedance than cables

EAC compliant

RoHS compliant

Compliant to ISO 6469-1 (Electrically propelled road vehicles - Part 1: Rechargeable energy storage system) - Section 6.2.2 Vibrations

SPECIFICATIONS

Material:	Copper
Complies With:	IEC@ 60439.1; IEC@ 61439.1
Finish:	Tinned
Certification Details:	UL@ 467
Working Temperature:	105 °C Max

Table 1/2

Catalog Number	Article Number	Ampacity	Thickness (T)	Cross Section	Length (L)	Hole Size (HS)
MBJ6-150-6	556600	40A	1.1 mm	6mm ²	150 mm	6.5 mm
MBJ10-200-6	556930	75A	1.1 mm	10mm ²	200 mm	6.5 mm
MBJ16-100-6	563540	120A	1.5 mm	16mm ²	100 mm	6.5 mm
MBJ16-100-8	556620	120A	1.5 mm	16mm ²	100 mm	8.5 mm
MBJ6-200-6	563410	40A	1.1 mm	6mm ²	200 mm	6.5 mm
MBJ10-300-6	556610	75A	1.1 mm	10mm ²	300 mm	6.5 mm
MBJ16-200-6	563300	120A	1.5 mm	16mm ²	200 mm	6.5 mm
MBJ16-200-8	556640	120A	1.5 mm	16mm ²	200 mm	8.5 mm
MBJ25-100-10	556670	150A	1.9 mm	25mm ²	100 mm	10.5 mm
MBJ30-100-10	556720	180A	2 mm	30mm ²	100 mm	10.5 mm
MBJ16-150-6	563550	120A	1.5 mm	16mm ²	150 mm	6.5 mm
MBJ16-150-8	556630	120A	1.5 mm	16mm ²	150 mm	8.5 mm
MBJ16-250-8	556650	120A	1.5 mm	16mm ²	250 mm	8.5 mm
MBJ25-150-10	556680	150A	1.9 mm	25mm ²	150 mm	10.5 mm
MBJ35-100-10	556770	197A	2.1 mm	35mm ²	100 mm	10.5 mm
MBJ16-300-6	563320	120A	1.5 mm	16mm ²	300 mm	6.5 mm
MBJ16-300-8	556660	120A	1.5 mm	16mm ²	300 mm	8.5 mm
MBJ25-200-10	556690	150A	1.9 mm	25mm ²	200 mm	10.5 mm
MBJ25-200-12	563430	150A	1.9 mm	25mm ²	200 mm	12.5 mm
MBJ25-200-6	563340	150A	1.9 mm	25mm ²	200 mm	6.5 mm
MBJ25-200-8	555200	150A	1.9 mm	25mm ²	200 mm	8.5 mm
MBJ30-150-10	556730	180A	2 mm	30mm ²	150 mm	10.5 mm
MBJ35-150-10	556780	197A	2.1 mm	35mm ²	150 mm	10.5 mm
MBJ50-100-10	556820	250A	2.5 mm	50mm ²	100 mm	10.5 mm
MBJ16-500-8	556940	120A	1.5 mm	16mm ²	500 mm	8.5 mm
MBJ25-250-10	556700	150A	1.9 mm	25mm ²	250 mm	10.5 mm
MBJ30-200-10	556740	180A	2 mm	30mm ²	200 mm	10.5 mm
MBJ25-300-10	556710	150A	1.9 mm	25mm ²	300 mm	10.5 mm
MBJ25-300-8	555201	150A	1.9 mm	25mm ²	300 mm	8.5 mm
MBJ25-500-10	556950	150A	1.9 mm	25mm ²	500 mm	10.5 mm
MBJ30-250-10	556750	180A	2 mm	30mm ²	250 mm	10.5 mm
MBJ35-200-10	556790	197A	2.1 mm	35mm ²	200 mm	10.5 mm
MBJ30-300-10	556760	180A	2 mm	30mm ²	300 mm	10.5 mm
MBJ30-500-10	556960	180A	2 mm	30mm ²	500 mm	10.5 mm
MBJ35-250-10	556800	197A	2.1 mm	35mm ²	250 mm	10.5 mm
MBJ35-300-10	556810	197A	2.1 mm	35mm ²	300 mm	10.5 mm
MBJ35-500-10	556970	197A	2.1 mm	35mm ²	500 mm	10.5 mm
MBJ50-150-10	556830	250A	2.5 mm	50mm ²	150 mm	10.5 mm
MBJ35-250-25	565000	197A	3 mm	35mm ²	250 mm	25.5 mm

Catalog Number	Article Number	Ampacity	Thickness(T)	CrossSection	Length (L)	Hole Size (HS)
MBJ50-200-10	556840	250A	2.5 mm	50mm ²	200 mm	10.5 mm
MBJ50-200-12	563440	250A	2.5 mm	50mm ²	200 mm	12.5 mm
MBJ50-200-16	563360	250A	2.5 mm	50mm ²	200 mm	16.5 mm
MBJ50-200-18	563370	250A	2.5 mm	50mm ²	200 mm	18.5 mm
MBJ50-200-6	563350	250A	2.5 mm	50mm ²	200 mm	6.5 mm
MBJ50-250-10	556850	250A	2.5 mm	50mm ²	250 mm	10.5 mm
MBJ50-300-10	556860	250A	2.5 mm	50mm ²	300 mm	10.5 mm
MBJ50-300-16	563390	250A	2.5 mm	50mm ²	300 mm	16.5 mm
MBJ50-300-18	563400	250A	2.5 mm	50mm ²	300 mm	18.5 mm
MBJ50-300-6	563380	250A	2.5 mm	50mm ²	300 mm	6.5 mm
MBJ50-500-10	556980	250A	2.5 mm	50mm ²	500 mm	10.5 mm
MBJ50-500-12	563560	250A	2.5 mm	50mm ²	500 mm	12.5 mm
MBJ70-300-22	563480	290A	3 mm	70mm ²	300 mm	22.5 mm
MBJ70-300-10	563460	290A	3.4 mm	70mm ²	300 mm	10.5 mm
MBJ70-300-12	563420	290A	3.4 mm	70mm ²	300 mm	12.5 mm
MBJ70-300-16	563470	290A	3.4 mm	70mm ²	300 mm	16.5 mm
MBJ70-300-6	563450	290A	3.4 mm	70mm ²	300 mm	6.5 mm
MBJ70-500-10	563490	290A	3.4 mm	70mm ²	500 mm	10.5 mm
MBJ100-250-16	563500	349A	4 mm	100mm ²	250 mm	16.5 mm
MBJ100-250-30	563510	349A	4 mm	100mm ²	250 mm	30.5 mm
MBJ100-500-16	563520	349A	4 mm	100mm ²	500 mm	16.5 mm
MBJ100-500-30	563530	349A	4 mm	100mm ²	500 mm	30.5 mm

Table 2/2

Catalog Number	Article Number	A	B	Unit Weight	Certifications
MBJ6-150-6	556600	11 mm	18 mm	0.01 kg	cUL, UL, RoHS, Bureau Veritas, UKCA, ERIFLEX MBJ
MBJ10-200-6	556930	11 mm	18 mm	0.02 kg	cUL, UL, RoHS, Bureau Veritas, UKCA, ERIFLEX MBJ
MBJ16-100-6	563540	15 mm	20 mm	0.02 kg	cUL, UL, RoHS, Bureau Veritas, UKCA, ERIFLEX MBJ
MBJ16-100-8	556620	15 mm	20 mm	0.02 kg	cUL, UL, RoHS, Bureau Veritas, UKCA, ERIFLEX MBJ

CatalogNumber	Article Number	A	B	Unit Weight	Certifications
MBJ6-200-6	563410	11 mm	18 mm	0.02 kg	cUL, UL, RoHS, Bureau Veritas, UKCA, ERIFLEX MBJ
MBJ10-300-6	556610	11 mm	18 mm	0.03 kg	cUL, UL, RoHS, Bureau Veritas, UKCA, ERIFLEX MBJ
MBJ16-200-6	563300	15 mm	20 mm	0.03 kg	cUL, UL, RoHS, Bureau Veritas, UKCA, ERIFLEX MBJ
MBJ16-200-8	556640	15 mm	20 mm	0.03 kg	cUL, UL, RoHS, Bureau Veritas, UKCA, ERIFLEX MBJ
MBJ25-100-10	556670	20 mm	28 mm	0.03 kg	cUL, UL, RoHS, Bureau Veritas, UKCA, ERIFLEX MBJ
MBJ30-100-10	556720	22 mm	28 mm	0.03 kg	cUL, UL, RoHS, Bureau Veritas, UKCA, ERIFLEX MBJ
MBJ16-150-6	563550	15 mm	20 mm	0.04 kg	cUL, UL, RoHS, Bureau Veritas, UKCA, ERIFLEX MBJ
MBJ16-150-8	556630	15 mm	20 mm	0.04 kg	cUL, UL, RoHS, Bureau Veritas, UKCA, ERIFLEX MBJ
MBJ16-250-8	556650	15 mm	20 mm	0.04 kg	cUL, UL, RoHS, Bureau Veritas, UKCA, ERIFLEX MBJ
MBJ25-150-10	556680	20 mm	28 mm	0.04 kg	cUL, UL, RoHS, Bureau Veritas, UKCA, ERIFLEX MBJ
MBJ35-100-10	556770	22 mm	28 mm	0.04 kg	cUL, UL, RoHS, Bureau Veritas, UKCA, ERIFLEX MBJ
MBJ16-300-6	563320	15 mm	20 mm	0.05 kg	cUL, UL, RoHS, Bureau Veritas, UKCA, ERIFLEX MBJ
MBJ16-300-8	556660	15 mm	20 mm	0.05 kg	cUL, UL, RoHS, Bureau Veritas, UKCA, ERIFLEX MBJ
MBJ25-200-10	556690	20 mm	28 mm	0.05 kg	cUL, UL, RoHS, Bureau Veritas, UKCA, ERIFLEX MBJ

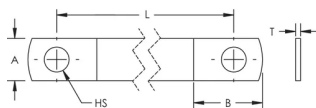
CatalogNumber	Article Number	A	B	Unit Weight	Certifications
MBJ25-200-12	563430	20 mm	28 mm	0.05 kg	cUL, UL, RoHS, Bureau Veritas, UKCA, ERIFLEX MBJ
MBJ25-200-6	563340	20 mm	28 mm	0.05 kg	cUL, UL, RoHS, Bureau Veritas, UKCA, ERIFLEX MBJ
MBJ25-200-8	555200	20 mm	28 mm	0.05 kg	cUL, UL, Bureau Veritas
MBJ30-150-10	556730	22 mm	28 mm	0.05 kg	cUL, UL, RoHS, Bureau Veritas, UKCA, ERIFLEX MBJ
MBJ35-150-10	556780	22 mm	28 mm	0.05 kg	cUL, UL, RoHS, Bureau Veritas, UKCA, ERIFLEX MBJ
MBJ50-100-10	556820	28 mm	33 mm	0.05 kg	cUL, UL, RoHS, Bureau Veritas, UKCA, ERIFLEX MBJ
MBJ16-500-8	556940	15 mm	20 mm	0.08 kg	cUL, UL, RoHS, Bureau Veritas, UKCA, ERIFLEX MBJ
MBJ25-250-10	556700	20 mm	28 mm	0.06 kg	cUL, UL, RoHS, Bureau Veritas, UKCA, ERIFLEX MBJ
MBJ30-200-10	556740	22 mm	28 mm	0.06 kg	cUL, UL, RoHS, Bureau Veritas, UKCA, ERIFLEX MBJ
MBJ25-300-10	556710	20 mm	28 mm	0.08 kg	cUL, UL, RoHS, Bureau Veritas, UKCA, ERIFLEX MBJ
MBJ25-300-8	555201	20 mm	28 mm	0.08 kg	cUL, UL, Bureau Veritas
MBJ25-500-10	556950	20 mm	28 mm	0.13 kg	cUL, UL, RoHS, Bureau Veritas, UKCA, ERIFLEX MBJ
MBJ30-250-10	556750	22 mm	28 mm	0.07 kg	cUL, UL, RoHS, Bureau Veritas, UKCA, ERIFLEX MBJ
MBJ35-200-10	556790	22 mm	28 mm	0.07 kg	cUL, UL, RoHS, Bureau Veritas, UKCA, ERIFLEX MBJ

CatalogNumber	Article Number	A	B	Unit Weight	Certifications
MBJ30-300-10	556760	22 mm	28 mm	0.09 kg	cUL, UL, RoHS, Bureau Veritas, UKCA, ERIFLEX MBJ
MBJ30-500-10	556960	22 mm	28 mm	0.15 kg	cUL, UL, RoHS, Bureau Veritas, UKCA, ERIFLEX MBJ
MBJ35-250-10	556800	22 mm	28 mm	0.09 kg	cUL, UL, RoHS, Bureau Veritas, UKCA, ERIFLEX MBJ
MBJ35-300-10	556810	22 mm	28 mm	0.11 kg	cUL, UL, RoHS, Bureau Veritas, UKCA, ERIFLEX MBJ
MBJ35-500-10	556970	22 mm	28 mm	0.18 kg	cUL, UL, RoHS, Bureau Veritas, UKCA, ERIFLEX MBJ
MBJ50-150-10	556830	28 mm	33 mm	0.08 kg	cUL, UL, RoHS, Bureau Veritas, UKCA, ERIFLEX MBJ
MBJ35-250-25	565000	40 mm	45 mm	0.09 kg	cUL, UL, RoHS, Bureau Veritas, UKCA, ERIFLEX MBJ
MBJ50-200-10	556840	28 mm	33 mm	0.12 kg	cUL, UL, RoHS, Bureau Veritas, UKCA, ERIFLEX MBJ
MBJ50-200-12	563440	28 mm	33 mm	0.12 kg	cUL, UL, RoHS, Bureau Veritas, UKCA, ERIFLEX MBJ
MBJ50-200-16	563360	28 mm	33 mm	0.11 kg	cUL, UL, RoHS, Bureau Veritas, UKCA, ERIFLEX MBJ
MBJ50-200-18	563370	28 mm	33 mm	0.11 kg	cUL, UL, RoHS, Bureau Veritas, UKCA, ERIFLEX MBJ
MBJ50-200-6	563350	28 mm	33 mm	0.12 kg	cUL, UL, RoHS, Bureau Veritas, UKCA, ERIFLEX MBJ
MBJ50-250-10	556850	28 mm	33 mm	0.13 kg	cUL, UL, RoHS, Bureau Veritas, UKCA, ERIFLEX MBJ
MBJ50-300-10	556860	28 mm	33 mm	0.15 kg	cUL, UL, RoHS, Bureau Veritas, UKCA, ERIFLEX MBJ

CatalogNumber	Article Number	A	B	Unit Weight	Certifications
MBJ50-300-16	563390	28 mm	33 mm	0.15 kg	cUL, UL, RoHS, Bureau Veritas, UKCA, ERIFLEX MBJ
MBJ50-300-18	563400	28 mm	33 mm	0.14 kg	cUL, UL, RoHS, Bureau Veritas, UKCA, ERIFLEX MBJ
MBJ50-300-6	563380	28 mm	33 mm	0.15 kg	cUL, UL, RoHS, Bureau Veritas, UKCA, ERIFLEX MBJ
MBJ50-500-10	556980	28 mm	33 mm	0.26 kg	cUL, UL, RoHS, Bureau Veritas, UKCA, ERIFLEX MBJ
MBJ50-500-12	563560	28 mm	33 mm	0.26 kg	cUL, UL, RoHS, Bureau Veritas, UKCA, ERIFLEX MBJ
MBJ70-300-22	563480	40 mm	45 mm	0.2 kg	cUL, UL, RoHS, Bureau Veritas, UKCA, ERIFLEX MBJ
MBJ70-300-10	563460	28 mm	33 mm	0.21 kg	cUL, UL, RoHS, Bureau Veritas, UKCA, ERIFLEX MBJ
MBJ70-300-12	563420	28 mm	33 mm	0.21 kg	cUL, UL, RoHS, Bureau Veritas, UKCA, ERIFLEX MBJ
MBJ70-300-16	563470	28 mm	33 mm	0.2 kg	cUL, UL, RoHS, Bureau Veritas, UKCA, ERIFLEX MBJ
MBJ70-300-6	563450	28 mm	33 mm	0.21 kg	cUL, UL, RoHS, Bureau Veritas, UKCA, ERIFLEX MBJ
MBJ70-500-10	563490	28 mm	33 mm	0.34 kg	cUL, UL, RoHS, Bureau Veritas, UKCA, ERIFLEX MBJ
MBJ100-250-16	563500	40 mm	55 mm	0.25 kg	cUL, UL, RoHS, Bureau Veritas, UKCA, ERIFLEX MBJ
MBJ100-250-30	563510	40 mm	55 mm	0.25 kg	cUL, UL, RoHS, Bureau Veritas, UKCA, ERIFLEX MBJ
MBJ100-500-16	563520	40 mm	42.5 mm	0.51 kg	cUL, UL, RoHS, Bureau Veritas, UKCA, ERIFLEX MBJ

CatalogNumber	Article Number	A	B	Unit Weight	Certifications
MBJ100-500-30	563530	40 mm	55 mm	0.51 kg	cUL, UL, RoHS, Bureau Veritas, UKCA, ERIFLEX MBJ

DIAGRAMS



WARNING

nVent products shall be installed and used only as indicated in nVent's product instruction sheets and training materials. Instruction sheets are available at www.nvent.com and from your nVent customer service representative. Improper installation, misuse, misapplication or other failure to completely follow nVent's instructions and warnings may cause product malfunction, property damage, serious bodily injury and death and/or void your warranty.

North America

+1.800.753.9221
Option 1 – Customer Care
Option 2 – Technical Support

Europe

Netherlands:
+31 800-0200135
France:
+33 800 901 793

Europe

Germany:
800 1890272
Other Countries:
+31 13 5835404

APAC

Shanghai:
+ 86 21 2412 1618/19
Sydney:
+61 2 9751 8500



Our powerful portfolio of brands:
nVent.com **CADDY ERICO HOFFMAN RAYCHEM SCHROFF**
TRACER