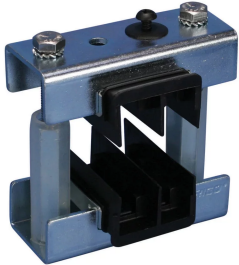


ABS ADJUSTABLE BUSBAR SUPPORT INSULATOR MODULE



CERTIFICATIONS



FEATURES

Modules provide flexibility to select distance between phases and supports

Extremely robust construction

Halogen free insulators

RoHS compliant

SPECIFICATIONS

Max Working Voltage, IEC (Ui):	1000;1500
Finish:	Electrogalvanized
Material:	Steel;Glass Fibre Reinforced Polyamide;Stainless Steel 304 (EN 1.4301)
Complies With:	IEC® 60439.1;IEC® 61439.1;IEC® 60695-2-11 (Glow Wire Test 960 °C)
Flammability Rating:	UL® 94V-0
Working Temperature:	-40 to 130 °C

Table 1/2

Catalog Number	Article Number	Typical Application Current Rating	Busbars per Phase	Busbar Thickness	Busbar Width	Width (W)
ABS1-5MOD	560860	1700 A Max	1	5 mm	50 - 125 mm	74 mm
ABS4-5MOD	560870	3500 A Max	1 - 4	5 mm	50 - 125 mm	99 mm

Catalog Number	Article Number	Typical Application Current Rating	Busbars per Phase	Busbar Thickness	BusbarWidth	Width (W)
ABS1-10MOD	560880	2250 A Max	1	10 mm	50 - 125 mm	74 mm
ABS2-10MOD	560890	3600 A Max	1 - 2	10 mm	50 - 125 mm	99 mm
ABS3-10MOD	560900	4500 A Max	1 - 3	10 mm	50 - 125 mm	124 mm

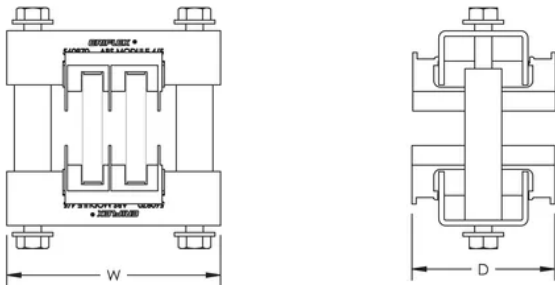
Table 2/2

Catalog Number	Article Number	Depth (D)	Unit Weight
ABS1-5MOD	560860	67 mm	0.64 kg
ABS4-5MOD	560870	67 mm	0.73 kg
ABS1-10MOD	560880	67 mm	0.64 kg
ABS2-10MOD	560890	67 mm	0.73 kg
ABS3-10MOD	560900	67 mm	0.81 kg

ADDITIONAL PRODUCT DETAILS

ABS Adjustable Busbar Support High Ampacity Kit available to support up to 200 mm (7.87") busbar width for applications up to 7400 A.

DIAGRAMS



WARNING

nVent products shall be installed and used only as indicated in nVent's product instruction sheets and training materials. Instruction sheets are available at www.nvent.com and from your nVent customer service representative. Improper installation, misuse, misapplication or other failure to completely follow nVent's instructions and warnings may cause product malfunction, property damage, serious bodily injury and death and/or void your warranty.

North America
+1.800.753.9221
Option 1 – Customer Care
Option 2 – Technical Support

Europe
Netherlands:
+31 800-0200135
France:
+33 800 901 793

Europe
Germany:
800 1890272
Other Countries:
+31 13 5835404

APAC
Shanghai:
+ 86 21 2412 1618/19
Sydney:
+61 2 9751 8500



Our powerful portfolio of brands:
nVent.com CADDY ERICO HOFFMAN RAYCHEM SCHROFF
TRACER