



wieland



Data sheet

Commercial Art.No.: 57.570.0155.0

Feed-through terminal WKN70 / U /V0

Feed-through terminal with Screw connection for mounting on TS 35/ TS 32, nominal cross section: 70 mm², width: 24 mm, color: grey

Available from the UK's premier control gear distributor,
iLECSYS Ltd, 01844 397300
sales@ilecsys.co.uk

Commercial Art.No.	57.570.0155.0
EAN	4015573506855
Order Unit	20

Certificates / Approvals



ATEX

SEV-Ex



Technical data

General

Nominal cross section	70 mm ²
Colour	Grey
Number of levels	1
Number of clamp positions per level	2
Width/grid dimension	24 mm
Insulating housing	PA666
Inflammability class of insulation material acc. with UL94	V0
Explosion-tested version "Ex e"	Yes
Mounting method	DIN rail (top hat rail)/G-rail
Terminal blocks for electrical installations	No

Technical data

Rated current	192 A
Rated voltage	800 V
Rated impulse voltage	8 kV
Pollution degree	3
Closing plate required	No
Type of insulation material	Thermoplastic
Length	76.8 mm

Connection Data

Connection type 1	Screw connection
Connection type 2	Screw connection
Minimum cross section fine stranded	10 mm ²
Maximum cross section fine stranded	70 mm ²
Minimum cross section stranded	16 mm ²
Maximum cross section stranded	95 mm ²
Wire strip length	24 mm

Torque conductor mounting	6 Nm
---------------------------	------

Technical Data UL/CSA

Cross section UL	6-2/0 AWG
Voltage UL	600 V
Current factory wiring	175 A
Current field wiring	175 A
Cross section CSA	6-2/0 AWG
Voltage CSA	600 V
Current CSA	170 A

Classification

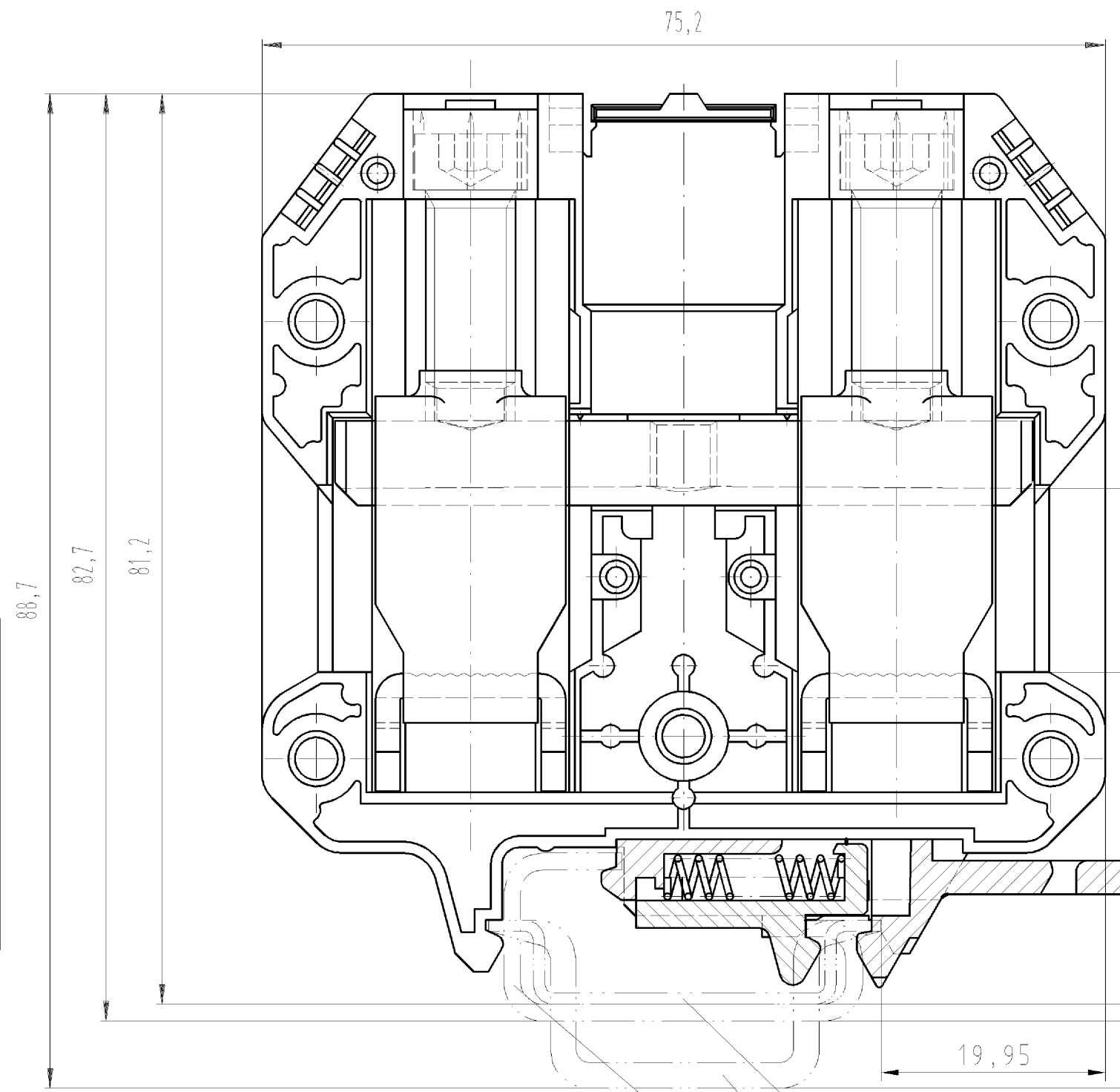
ECLASS 8.1	27141120
ETIM 7.0	EC000897
ETIM 6.0	EC000897
ETIM 5.0	EC000897
ETIM 4.0	EC000897
ETIM 3.0	EC000897

Accessories

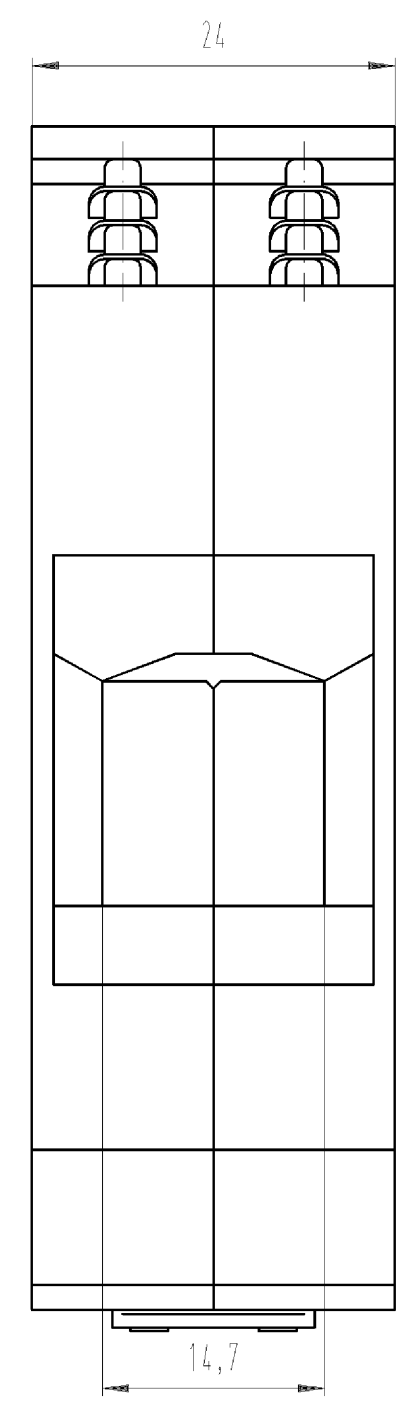
Commercial Art.No.:	Article-type description:	Description:
Z7.286.3227.0	Jumper bar VB WKN 70 - 2	Cross connector for DIN rail terminal blocks type WKN ..., 2 -pole
Z7.286.3327.0	Jumper bar VB WKN 70 - 3	Cross connector for DIN rail terminal blocks type WKN ..., 3 -pole
Z7.286.3427.0	Jumper bar VB WKN 70 - 4	Cross connector for DIN rail terminal blocks type WKN ..., 4 -pole
Z7.286.3527.0	Jumper bar VB WKN 70 - 5	Cross connector for DIN rail terminal blocks type WKN ..., 5 -pole
Z7.286.3627.0	Jumper bar VB WKN 70 - 6	Cross connector for DIN rail terminal blocks type WKN ..., 6 -pole
98.190.0000.0	Mounting rail TS 32 UNPERF - l:2000mm	Mounting rail G 32, unslotted, Höhe 5,5 mm, length 2 m, material steel. galv. zinc-plated and dichromated
98.190.1000.0	Mounting rail TS 32 PERF 15mm - l:2000mm	Mounting rail G 32, slotted, Höhe 15 mm, length 2 m, material steel. galv. zinc-plated and dichromated
98.210.0000.0	Mounting rail TS 32 UNPERF AL - l:2000mm	Mounting rail G 32, unslotted, Höhe 15 mm, length 2 m, material Aluminium
98.220.0000.0	Mounting rail TS 32 UNPERF CU - l:2000mm	Mounting rail G 32, unslotted, Höhe 15 mm, length 2 m, material E copper
98.300.0000.0	Mounting rail TS 35x7,5 UNPERF - l:2000mm	Mounting rail TS 35, unslotted, size 7,5 mm, length 2 m, material steel. galv. zinc-plated and dichromated
98.300.1000.0	Mounting rail TS 35x7,5 PERF 15mm - l:2000mm	Mounting rail TS 35, slotted, size 7,5 mm, length 2 m, material steel. galv. zinc-plated and dichromated
98.300.1900.0	Mounting rail TS 35x7,5 PERF 25mm - l:2000mm	Mounting rail TS 35, slotted, size 7,5 mm, length 2 m, material steel. galv. zinc-plated and dichromated
98.360.0000.0	Mounting rail TS 35x15-2,3 UNPERF - l:2000mm	Mounting rail TS 35, unslotted, size 15 mm, length 2 m, material steel. galv. zinc-plated and dichromated
98.360.0004.0	Mounting rail TS 35x15-2,3 UNPERF FZN - l:2000mm	Mounting rail TS 35, unslotted, size 15 mm, length 2 m, material steel, hot galvanized
98.370.0000.0	Mounting rail TS 35x15 UNPERF - l:2000mm	Mounting rail TS 35, unslotted, size 15 mm, length 2 m, material steel. galv. zinc-plated and dichromated
98.370.1000.0	Mounting rail TS 35x15 PERF 15mm - l:2000mm	Mounting rail TS 35, slotted, size 15 mm, length 2 m, material steel. galv. zinc-plated and dichromated
98.380.0000.0	Mounting rail TS 35x15-2,3 UNPERF CU - l:2000mm	Mounting rail TS 35, unslotted, size 15 mm, length 2 m, material E copper

04.326.2653.8	Cover with marking facility AD VB 70 GELB	Cover with marking facility for cross connector for DIN rail terminal blocks type WK ...
04.343.5356.8	Warning cover AD VB 24/4 GELB	Cover with warning symbol for cross connector for DIN rail terminal blocks type WK ...
07.311.7955.0	Partition TWN 70 /V0	Partition for DIN rail terminal blocks type WKN 70..., color: grey
Z5.522.7453.0	End bracket 9708 / S35	End clamp for mounting rail TS 35
Z5.522.8553.0	End bracket 9708 / 2 S 35	End clamp for mounting rail TS 35
Z5.523.5653.0	End bracket WE 2/U	End clamp for mounting rail TS 35 and TS 32
Z5.523.5753.0	End bracket WE 1/U	End clamp for mounting rail TS 35 and TS 32
Z5.523.9353.0	End bracket WEF 1/35	End clamp for mounting rail TS 35

○ Diese Maße werden bei Abnahme besonders geprüft
 ○ Ausschließlich Prüfmaße
 ○ Mit / NE Rekanzeichnete Maße sind nur für interne Zwecke gültig



Vorderansicht im geöffnetem Zustand gezeichnet.
 The front view be drawn without cover.

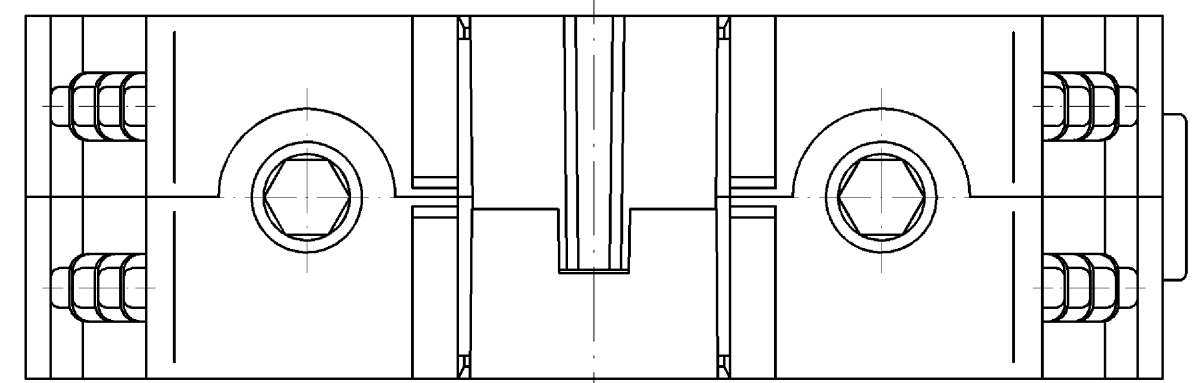


Hutschiene EN 60715-35x7,5
 mounting rail EN 60715-35x7,5
 Hutschiene EN 60715-35x15
 mounting rail EN 60715-35x15
 G-Schiene EN 60715-G32
 G-rail EN 60715-G32

Weitere Daten siehe Katalog
 further data see catalog

* spezielle Verpackung
 specific package

Teile-Nr. Part-number	Farbe colour	Typ type
57.570.0155.0	grau /grey	WKN 70/U /VO
57.570.0155.6	blau /blue	WKN 70/U Blau/VO
* 57.570.0195.0	grau /grey	WKN 70/U /VO
* 57.570.0195.6	blau /blue	WKN 70/U Blau/VO



Freitoleranz nach DIN		CAD - Zeichnung, keine manuellen Änderungen			1. Verwendung: -		Bl.: 1 von 1	
	Maßstab	2004	Tag	Name	Zeichnung Nr.		Index	
	%	Entworfen	23.11.	Schmitt J.	T 57.570.0155.0 01K			
		Geprüft	-	-	Ersatz für: -			
		Normgepr.	-	-	Benennung			
Buchstabe Datum / Blatt		wieland			DURCHGANGSKLEMME			
Änderung		Elektrische Verbindungen			Modular terminal			

Weitergabe sowie Vervielfältigung dieses Dokuments, Verwertung und Mitteilung seines Inhalts sind verboten, soweit nicht ausdrücklich gestattet.
 The reproduction, distribution and utilization of this document as well as the communication of its contents to others without express authorization is prohibited.

575700155001K_4_CAD/028_Schnitt 2004-11-29T07:38:14 1.000