



wieland



Data sheet

Commercial Art.No.: 57.597.0155.0

Feed-through terminal WKN150 / U /V0

Feed-through terminal with Screw connection for mounting on TS 35/ TS 32, nominal cross section: 150 mm², width: 28 mm, color: grey

Available from the UK's premier control gear distributor,
iLECSYS Ltd, 01844 397300
sales@ilecsys.co.uk

Commercial Art.No.	57.597.0155.0
EAN	4015573506862
Order Unit	10

Certificates / Approvals



ATEX

SEV-Ex



Technical data

General

Nominal cross section	150 mm ²
Colour	Grey
Number of levels	1
Number of clamp positions per level	2
Width/grid dimension	28 mm
Insulating housing	PA666
Inflammability class of insulation material acc. with UL94	V0
Explosion-tested version "Ex e"	Yes
Mounting method	DIN rail (top hat rail)/G-rail
Terminal blocks for electrical installations	No

Technical data

Rated current	309 A
Rated voltage	1000 V
Rated impulse voltage	8 kV
Pollution degree	3
Closing plate required	No
Type of insulation material	Thermoplastic
Length	96 mm

Connection Data

Connection type 1	Screw connection
Connection type 2	Screw connection
Minimum cross section fine stranded	35 mm ²
Maximum cross section fine stranded	150 mm ²
Minimum cross section stranded	35 mm ²
Maximum cross section stranded	185 mm ²
Wire strip length	30 mm

Torque conductor mounting	10 Nm
---------------------------	-------

Technical Data UL/CSA

Cross section UL	2/0 AWG - 350 kcmil
Voltage UL	600 V
Current factory wiring	335 A
Current field wiring	335 A
Cross section CSA	2/0 AWG - 350 kcmil
Voltage CSA	1000 V
Current CSA	365 A

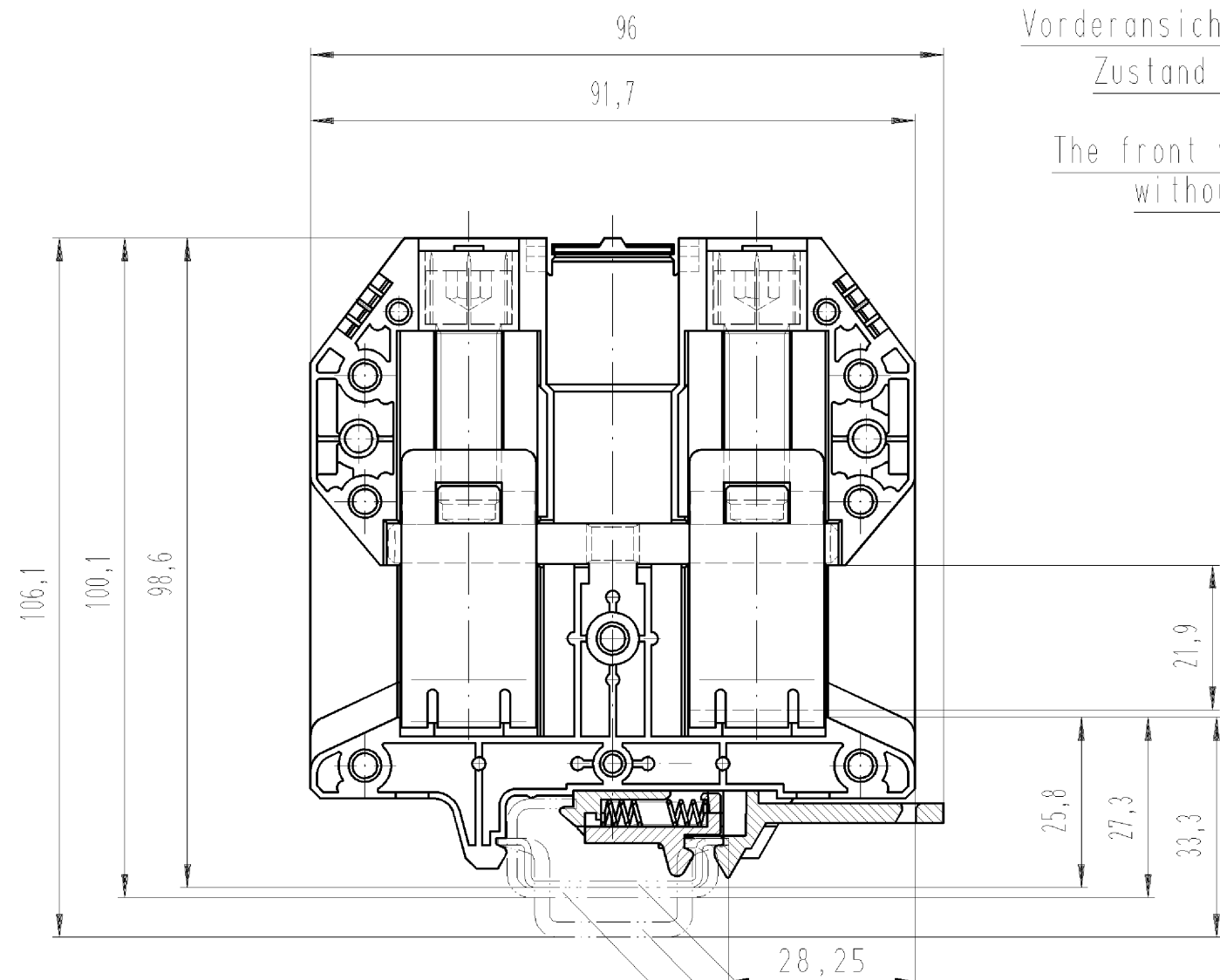
Classification

ECLASS 8.1	27141120
ETIM 7.0	EC000897
ETIM 6.0	EC000897
ETIM 5.0	EC000897
ETIM 4.0	EC000897
ETIM 3.0	EC000897

Accessories

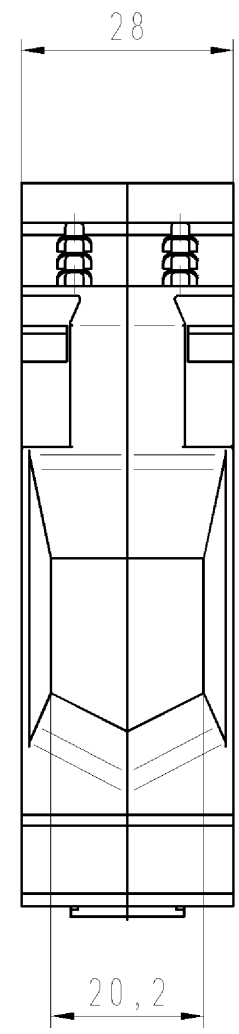
Commercial Art.No.:	Article-type description:	Description:
Z7.287.1227.0	Jumper bar VBWKN150 - 2	Cross connector for DIN rail terminal blocks type WKN ..., 2 -pole
Z7.287.1327.0	Jumper bar VBWKN150 - 3	Cross connector for DIN rail terminal blocks type WKN ..., 3 -pole
98.190.0000.0	Mounting rail TS 32 UNPERF - l:2000mm	Mounting rail G 32, unslotted, Höhe 5,5 mm, length 2 m, material steel. galv. zinc-plated and dichromated
98.190.1000.0	Mounting rail TS 32 PERF 15mm - l:2000mm	Mounting rail G 32, slotted, Höhe 15 mm, length 2 m, material steel. galv. zinc-plated and dichromated
98.210.0000.0	Mounting rail TS 32 UNPERF AL - l:2000mm	Mounting rail G 32, unslotted, Höhe 15 mm, length 2 m, material Aluminium
98.220.0000.0	Mounting rail TS 32 UNPERF CU - l:2000mm	Mounting rail G 32, unslotted, Höhe 15 mm, length 2 m, material E copper
98.300.0000.0	Mounting rail TS 35x7,5 UNPERF - l:2000mm	Mounting rail TS 35, unslotted, size 7,5 mm, length 2 m, material steel. galv. zinc-plated and dichromated
98.300.1000.0	Mounting rail TS 35x7,5 PERF 15mm - l:2000mm	Mounting rail TS 35, slotted, size 7,5 mm, length 2 m, material steel. galv. zinc-plated and dichromated
98.300.1900.0	Mounting rail TS 35x7,5 PERF 25mm - l:2000mm	Mounting rail TS 35, slotted, size 7,5 mm, length 2 m, material steel. galv. zinc-plated and dichromated
98.360.0000.0	Mounting rail TS 35x15-2,3 UNPERF - l:2000mm	Mounting rail TS 35, unslotted, size 15 mm, length 2 m, material steel. galv. zinc-plated and dichromated
98.360.0004.0	Mounting rail TS 35x15-2,3 UNPERF FZN - l:2000mm	Mounting rail TS 35, unslotted, size 15 mm, length 2 m, material steel, hot galvanized
98.370.0000.0	Mounting rail TS 35x15 UNPERF - l:2000mm	Mounting rail TS 35, unslotted, size 15 mm, length 2 m, material steel. galv. zinc-plated and dichromated
98.370.1000.0	Mounting rail TS 35x15 PERF 15mm - l:2000mm	Mounting rail TS 35, slotted, size 15 mm, length 2 m, material steel. galv. zinc-plated and dichromated
98.380.0000.0	Mounting rail TS 35x15-2,3 UNPERF CU - l:2000mm	Mounting rail TS 35, unslotted, size 15 mm, length 2 m, material E copper
04.343.5456.8	Warning cover AD VB 28/4 GELB	Cover with warning symbol for cross connector for DIN rail terminal blocks type WK ...
Z5.522.7453.0	End bracket 9708 / S35	End clamp for mounting rail TS 35
Z5.522.8553.0	End bracket 9708 / 2 S 35	End clamp for mounting rail TS 35

Z5.523.5653.0	End bracket WE 2/U	End clamp for mounting rail TS 35 and TS 32
Z5.523.5753.0	End bracket WE 1/U	End clamp for mounting rail TS 35 and TS 32
Z5.523.9353.0	End bracket WEF 1/35	End clamp for mounting rail TS 35



Vorderansicht im geöffnetem Zustand gezeichnet.

The front view be drawn without cover.



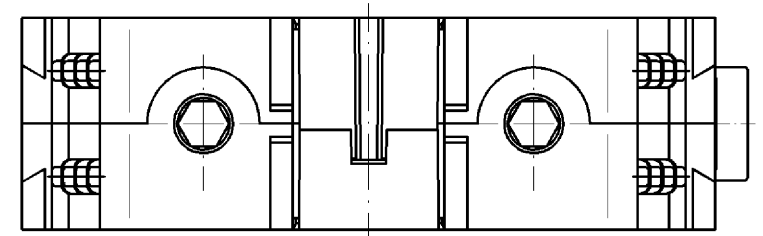
○ Diese Maße werden bei Abnahme besonders geprüft
 □ Ausschließlich Prüfmaße
 M11/A Rekanzeichene Maße sind nur für interne Zwecke gültig

- Hutschiene EN 60715-35x7,5
mounting rail EN 60715-35x7,5
- Hutschiene EN 60715-35x15
mounting rail EN 60715-35x15
- G-Schiene EN 60715-632
G-rail EN 60715-632

spezielle Verpackung *
specific package

Teile.-Nr. part-number	Farbe colour	Typ type
57.597.0155.0	grau/grey	WKN 150/U /VO
57.597.0155.6	blau/blue	WKN 150/U BLAU /VO
* 57.597.0195.0	grau/grey	WKN 150/U /VO
* 57.597.0195.6	blau/blue	WKN 150/U BLAU /VO

Weitere Daten siehe Katalog
further data see catalog



Freitoleranz nach DIN		CAD - Zeichnung, keine manuellen Änderungen		1. Verwendung: -		Bl.: 1 von 1	
	Maßstab	2004	Tag	Name		Zeichnung Nr.	
	%	Entworfen	29.11.	Schmitt J.		T 57.597.0155.0 01K	
		Geprüft	-	-		Index	
		Normgepr.	-	-		Ersatz für: -	
Buchstabe Datum / Blatt		wieland Elektrische Verbindungen		Benennung			
Änderung				DURCHGANGSKLEMME modular terminal			

Weitergabe sowie Vervielfältigung dieses Dokuments, Verwertung und Mitteilung seines Inhalts sind verboten, soweit nicht ausdrücklich gestattet.
The reproduction, distribution and utilization of this document as well as the communication of its contents to others without express authorization is prohibited.

575970155001K_4_CAD/MO28_Schnitt 2004-11-29T09:56:52 1.000