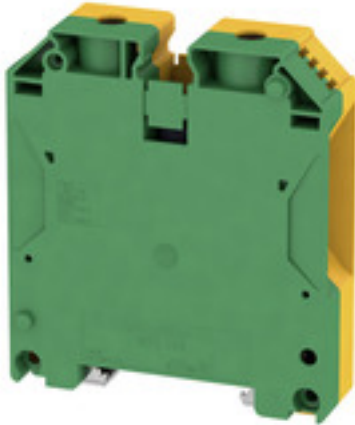


W-Series
WPE 70N/35

Weidmüller Interface GmbH & Co. KG
Klingenbergstraße 16
D-32758 Detmold
Germany
Fon: +49 5231 14-0
Fax: +49 5231 14-292083
www.weidmueller.com

Product image**Klippon® Connect with clamping yoke Technology**

The high reliability and variety of designs of the terminal blocks with clamping yoke connections make planning easier and optimises operational safety. Klippon® Connect provides a proven response to a range of different requirements.

General ordering data

Type	WPE 70N/35
Order No.	9512200000
Version	PE terminal, Screw connection, 70 mm ² , 8400 A (70 mm ²), Green/yellow
GTIN (EAN)	4008190403881
Qty.	10 pc(s).

W-Series
WPE 70N/35

Weidmüller Interface GmbH & Co. KG
 Klingenbergstraße 16
 D-32758 Detmold
 Germany
 Fon: +49 5231 14-0
 Fax: +49 5231 14-292083
 www.weidmueller.com

Technical data
Dimensions and weights

Width	20.5 mm	Width (inches)	0.807 inch
Height	75 mm	Height (inches)	2.953 inch
Depth	85 mm	Depth (inches)	3.346 inch
Depth including DIN rail	86 mm	Net weight	185.633 g

Temperatures

Operating temperature range	For operating temperature range see EC Design Test Certificate / IEC Ex-Certificate of Conformity	Storage temperature, max.	40 °C
Storage temperature, min.	10 °C	Storage temperature	10 °C...40 °C
Continuous operating temp., min.	-60 °C	Continuous operating temp., max.	130 °C

Environmental Product Compliance

REACH SVHC	Lead 7439-92-1
------------	----------------

Material data

Material	Wemid	Colour	Green/yellow
UL 94 flammability rating	V-0		

Rating data IECEx/ATEX

Certificate No. (ATEX)	DEMKO14ATEX1338U	Certificate No. (IECEX)	IECEXULD14.0005U
Wire cross section max. (ATEX)	70 mm ²	Wire cross section max. (IECEX)	70 mm ²
Operating temperature range	For operating temperature range see EC Design Test Certificate / IEC Ex-Certificate of Conformity	Marking EN 60079-7	Ex eb II C Gb
Ex 2014/34/EU label	II 2 G D		

System specifications

Version	Screw connection, With PE connection, in closed state	Tightening torque (mounting screw)	2...4 Nm
Tightening torque (clamping screw for copper conductors)	8...12 Nm	End cover plate required	No
Number of potentials	1	Number of levels	1
No. of clamping points per level	2	Number of potentials per tier	1
Levels cross-connected internally	No	PE connection	Yes
Rail	TS 35	N-function	No
PE function	Yes	PEN function	Yes

Additional technical data

Explosion-tested version	Yes	Installation advice	when screwed in
Interlock	for screw fixing	Number of similar terminals	1
Open sides	closed	Type of mounting	when screwed in

CSA rating data

Certificate No. (CSA)	200039-1581431	Wire cross section max. (CSA)	0 AWG
Wire cross section min. (CSA)	6 AWG		

Creation date May 16, 2019 11:35:44 AM CEST

W-Series
WPE 70N/35

Weidmüller Interface GmbH & Co. KG
 Klingenbergstraße 16
 D-32758 Detmold
 Germany
 Fon: +49 5231 14-0
 Fax: +49 5231 14-292083
 www.weidmueller.com

Technical data**Conductors for clamping (rated connection)**

Blade size	S6 (DIN 6911)	Clamping range, max.	95 mm ²
Clamping range, min.	16 mm ²	Clamping screw	M 8
Connection cross-section, stranded, max.	95 mm ²	Connection cross-section, stranded, min.	16 mm ²
Connection direction	on side	Gauge to IEC 60947-1	B11
Number of connections	2	Stripping length	22 mm
Tightening torque, max.	12 Nm	Tightening torque, min.	8 Nm
Type of connection	Screw connection	Wire connection cross section AWG, max.	AWG 2/0
Wire connection cross section AWG, min.	AWG 6	Wire connection cross section, finely stranded, max.	70 mm ²
Wire connection cross-section, finely stranded with wire-end ferrules DIN 46228/1, max.	70 mm ²	Wire connection cross-section, finely stranded with wire-end ferrules DIN 46228/1, min.	16 mm ²
Wire connection cross-section, finely stranded with wire-end ferrules DIN 46228/4, max.	50 mm ²	Wire connection cross-section, finely stranded with wire-end ferrules DIN 46228/4, min.	16 mm ²
Wire connection cross-section, finely stranded, min.	16 mm ²	Wire connection cross-section, solid core, max.	16 mm ²
Wire connection cross-section, solid core, min.	16 mm ²		

PE rating data

Rated short-time current	8400 A (70 mm ²)	Centre screw on PE terminals	M 5
Tightening torque range for fixing screw	2.0...4.0 Nm	PEN function	Yes

Rating data

Rated cross-section	70 mm ²	Rated voltage to adjoining terminal	1,000 V
Standards	IEC 60947-7-2	Volume resistance according to IEC 60947-7-x	0.17 mΩ
Rated impulse withstand voltage to adjacent terminal	8 kV	Pollution severity	3

UL rating data

Certificate No. (cURus)	E60693	Conductor size Factory wiring max. (cURus)	0 AWG
Conductor size Factory wiring min. (cURus)	6 AWG	Conductor size Field wiring max. (cURus)	0 AWG
Conductor size Field wiring min. (cURus)	6 AWG		

Classifications

ETIM 3.0	EC000901	ETIM 4.0	EC000491
ETIM 5.0	EC000491	ETIM 6.0	EC000901
UNSPSC	30-21-18-11	eClass 5.1	27-14-03-05
eClass 6.2	27-14-03-05	eClass 7.1	27-14-03-05
eClass 8.1	27-14-11-41	eClass 9.0	27-14-11-41
eClass 9.1	27-14-11-41		

Data sheet

**W-Series
WPE 70N/35**

Weidmüller Interface GmbH & Co. KG
 Klingenbergstraße 16
 D-32758 Detmold
 Germany
 Fon: +49 5231 14-0
 Fax: +49 5231 14-292083
 www.weidmueller.com

Technical data

Approvals

Approvals



ROHS Conform

Downloads

Approval/Certificate/Document of Conformity	Attestation of Conformity IECEX Certificate DE_PT1002_20160414_263_ISSUE01.pdf ATEX Certificate
Brochure/Catalogue	CAT 1 TERM 16/17 EN
Engineering Data	EPLAN, WSCAD, Zuken E3.S
Engineering Data	STEP
User Documentation	NTI WDU/WPE 70N/35

Safety note

Safety notice [Safety Information](#)

Data sheet

W-Series
WPE 70N/35

Weidmüller Interface GmbH & Co. KG
Klingenbergstraße 16
D-32758 Detmold
Germany
Fon: +49 5231 14-0
Fax: +49 5231 14-292083
www.weidmueller.com

Drawings

