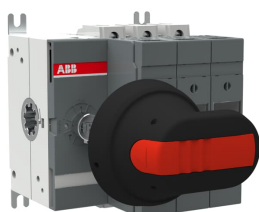


PRODUCT-DETAILS

# OS32GB03P

## OS32GB03P Switch fuse



### General Information

Extended Product Type	OS32GB03P
Product ID	1SCA115259R1001
EAN	6417019476681
Catalog Description	OS32GB03P Switch fuse
Long Description	Switch Fuses,Front Operated,3-pole,03 (Left Side),British Standard,A2-A3,Handle and shaft included,

### Popular Downloads

Data Sheet, Technical Information	1SCC311136D0201
Instructions and Manuals	1SCC311036M0212

### Dimensions

Product Net Width	112 mm
Product Net Height	125 mm
Product Net Depth / Length	109 mm
Product Net Weight	1.18 kg 2.6 lb

## Technical

Rated Operational Current AC-21A ( $I_e$ )	(500 V) 32 A (690 V) 32 A
Rated Operational Current AC-22A ( $I_e$ )	(500 V) 32 A (690 V) 32 A
Rated Operational Current AC-23A ( $I_e$ )	(500 V) 32 A (690 V) 32 A
Rated Operational Power AC-23A ( $P_e$ )	(220 ... 240 V) 7.5 kW (400 V) 15 kW (415 V) 15 kW (500 V) 18.5 kW (690 V) 22 kW
Conventional Free-air Thermal Current ( $I_{th}$ )	q = 40 °C 32 A
Conventional Thermal Current ( $I_{the}$ )	Fully Enclosed 32 A
Rated Impulse Withstand Voltage ( $U_{imp}$ )	12 kV
Rated Insulation Voltage ( $U_i$ )	1000 V
Rated Operational Voltage	500 V
Rated Short-time Withstand Current ( $I_{cw}$ )	for 1 s 2.5 kiloampere rms
Rated Conditional Short-Circuit Current ( $I_{nc}$ )	(690 V) 80 kA
Power Loss	at Rated Operating Conditions per Pole 7.5 W
Pollution Degree	3
Handle Type	Handle and shaft included
Switches Operating Mechanism	03 (Left Side)
Position of Line Terminals	Top In - Bottom Out Bottom In - Top Out
Fuse Size	A2-A3
Fuse System	British Standard
Operating Mode	Front Operated
Standards	IEC 60947-3
Mounting Type	Base mounting
Number of Poles	3
Cable Cross-Section	2.5 ... 25 mm <sup>2</sup>
Terminal Type	Screw Terminals
Tightening Torque	3 N·m 4 N·m

## Certificates and Declarations (Document Number)

CCC Certificate	CCC OS32-63G_2016.pdf
Declaration of Conformity - CE	1SCC311136D2703
DNV GL Certificate	1SCC311125D0203
EAC Certificate	EAC OT_OTDC_OTL_OTP_OTR_OTU_OTE_OETL_OESA_OESC_OTM_OS_OSM_.pdf
Instructions and Manuals	1SCC311036M0212
RoHS Information	1SCC311108D0203

## Container Information

Package Level 1 Units	1 piece
-----------------------	---------

Package Level 1 Width	170 mm 6.7 in
Package Level 1 Depth / Length	190 mm 7.5 in
Package Level 1 Height	145 mm 5.7 in
Package Level 1 Gross Weight	1.3 kg 2.9 lb
Package Level 1 EAN	6417019476681

---

## Classifications

---

Object Classification Code	Q
ETIM 4	EC001040 - Fuse switch disconnecter
ETIM 5	EC001040 - Fuse switch disconnecter
ETIM 6	EC001040 - Fuse switch disconnecter
ETIM 7	EC001040 - Fuse switch disconnecter
WEEE Category	5. Small Equipment (No External Dimension More Than 50 cm)

---

## Categories

---

Low Voltage Products and Systems → Switches → Switch Fuses

