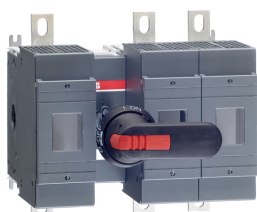


PRODUCT-DETAILS

OS400B12P

OS400B12P Switch fuse



General Information

Extended Product Type	OS400B12P
Product ID	1SCA022753R3470
EAN	6417019244976
Catalog Description	OS400B12P Switch fuse
Long Description	Switch Fuses,Front Operated,3-pole,12 (Between the Poles),British Standard,B1-B4,Handle and shaft included,

Popular Downloads

Data Sheet, Technical Information	1SCC311100D0201
Instructions and Manuals	1SCC311015M0215

Dimensions

Product Net Width	255 mm
Product Net Height	230 mm
Product Net Depth / Length	176 mm
Product Net Weight	6.7 kg 14.77 lb

Technical

Rated Operational Current AC-21A (I_e)	(500 V) 400 A (690 V) 400 A
Rated Operational Current AC-22A (I_e)	(380 ... 415 V) 400 A (500 V) 400 A (690 V) 400 A
Rated Operational Current AC-23A (I_e)	(380 ... 415 V) 400 A (500 V) 400 A (690 V) 400 A
Rated Operational Power AC-23A (P_e)	(220 ... 240 V) 132 kW (400 V) 220 kW (415 V) 230 kW (500 V) 280 kW (690 V) 400 kW
Conventional Free-air Thermal Current (I_{th})	q = 40 °C 400 A
Conventional Thermal Current (I_{the})	Fully Enclosed 400 A
Rated Impulse Withstand Voltage (U_{imp})	12 kV
Rated Insulation Voltage (U_i)	1000 V
Rated Operational Voltage	500 V
Rated Short-time Withstand Current (I_{cw})	for 1 s 14 kiloampere rms
Rated Conditional Short-Circuit Current (I_{nc})	(690 V) 80 kA
Power Loss	at Rated Operating Conditions per Pole 45 W
Pollution Degree	3
Handle Type	Handle and shaft included
Switches Operating Mechanism	12 (Between the Poles)
Position of Line Terminals	Top In - Bottom Out Bottom In - Top Out
Fuse Size	B1-B4
Fuse System	British Standard
Operating Mode	Front Operated
Standards	IEC 60947-3
Mounting Type	Base mounting
Number of Poles	3
Terminal Type	Lug terminals
Terminal Width	25 mm
Tightening Torque	30 ... 44 N·m

Certificates and Declarations (Document Number)

CCC Certificate	CCC OS315-400 2016
Declaration of Conformity - CE	1SCC311099D2704
DNV GL Certificate	1SCC311131D0202
EAC Certificate	EAC OT_OTDC_OTL_OTP_OTR_OTU_OTE_OETL_OESA_OESC_OTM_OS_OSM_pdf
Instructions and Manuals	1SCC311015M0215
RoHS Information	1SCC311108D0203

Container Information

Package Level 1 Units	1 piece
Package Level 1 Width	240 mm 9.45 in
Package Level 1 Depth / Length	270 mm 10.63 in
Package Level 1 Height	206 mm 8.11 in
Package Level 1 Gross Weight	7.1 kg 15.65 lb
Package Level 1 EAN	6417019244976

Classifications

Object Classification Code	Q
ETIM 4	EC001040 - Fuse switch disconnecter
ETIM 5	EC001040 - Fuse switch disconnecter
ETIM 6	EC001040 - Fuse switch disconnecter
ETIM 7	EC001040 - Fuse switch disconnecter
UNSPSC	39122233
WEEE Category	5. Small Equipment (No External Dimension More Than 50 cm)

Categories

Low Voltage Products and Systems → Switches → Switch Fuses

