



Power contactor  
BF26

Product designation

Product type designation

**Contact characteristics**

Number of poles	nr.	3
Rated insulation voltage $U_i$	V	690
Rated impulse withstand voltage $U_{imp}$	kV	6
Operating frequency	Operational frequency min	Hz 25
	Operational frequency max	Hz 400
Conventional free air thermal current $I_{th}$	A	45
Operating current	Operational current AC1 ( $\leq 40^\circ\text{C}$ )	A 45
	Operational current AC3 ( $\leq 440\text{V} \leq 55^\circ\text{C}$ )	A 26
	Operational current AC4 (400V)	A 11.5
Rated operational power AC1 ( $T \leq 40^\circ\text{C}$ )	230V	kW 17
	400V	kW 30
	500V	kW 37
	690V	kW 51
Rated operational power AC3 ( $T \leq 55^\circ\text{C}$ )	230V	kW 7.3
	400V	kW 13
	415V	kW 14
	440V	kW 14
	500V	kW 15.6
	690V	kW 18.5
Short-time allowable current for 10s (IEC/EN60947-1)	A	210
Protection fuse	gG (IEC)	A 50
	aM (IEC)	A 32
Making capacity (RMS value)	A	260
Breaking capacity at voltage	Breaking capacity 440V	A 208
	Breaking capacity 500V	A 184
	Breaking capacity 690V	A 168
Resistance per pole (average value)	m $\Omega$	2
Power dissipation per pole (average value)	Power dissipation pole (average value) $I_{th}$	W 4
	AC3	W 1.4
Tightening torque for terminals	min	Nm 2.5
	max	Nm 3
	min	lbft 1.8
	max	lbft 2.2
Tightening torque for coil terminal		

		min	Nm	0.8
		max	Nm	1
		min	lbft	0.8
		max	lbft	0.74
<hr/>				
max number of wires simultaneously connectable			nr.	2
<hr/>				
Conductor section				
AWG				
		min		14
		max		6
<hr/>				
Flexible w/o lug conductor section				
		min	mm <sup>2</sup>	2.5
		max	mm <sup>2</sup>	16
<hr/>				
Flexible c/w lug conductor section				
		min	mm <sup>2</sup>	1
		max	mm <sup>2</sup>	10
<hr/>				
Flexible with insulated spade lug conductor section				
		min	mm <sup>2</sup>	1
		max	mm <sup>2</sup>	10
<hr/>				
Power terminal protection according to IEC/EN 60529				IP20 when wired
<b>Auxiliary contact characteristics</b>				
Operational current AC1 (≤40°C)				A 45
<hr/>				
Operating current DC13				110V A Screw / DIN rail 35mm
<b>Ambient conditions</b>				
Temperature				
Operating temperature				
		min	°C	-50
		max	°C	70
<hr/>				
Storage temperature				
		min	°C	-60
		max	°C	80
<hr/>				
Max altitude				m 3000
<hr/>				
Operating position				normal allowable Vertical plan ±30°
<hr/>				
Mounting				Screw / DIN rail 35mm
<hr/>				
Weight				g 0.426
<b>Operations</b>				
Mechanical life				Cycles 20000000
Electrical life				Cycles 1600000
<b>Safety related data</b>				
Performance level B10d according to EN/ISO 13489-1				
		rated load	Cicli	1600000
		mechanical load	Cicli	20000000
<hr/>				
Mirror contacts according to IEC/EN 60947-4-1				yes
EMC compatibility				yes
<b>AC coil operating</b>				
AC operating voltage				
of 50/60Hz coil powered at 50Hz pick-up				
		min	%Us	0.8

		max	%Us	1.1
	drop-out	min	%Us	0.2
		max	%Us	0.55
of 50/60Hz coil powered at 60Hz				
	pick-up	min	%Us	0.85
		max	%Us	1.1
	drop-out	min	%Us	0.2
		max	%Us	0.55
of 60Hz coil powered at 60Hz				
	pick-up	min	%Us	0.8
		max	%Us	1.1
	drop-out	min	%Us	0.2
		max	%Us	0.55
<b>AC operating voltage</b>				
of 50/60Hz coil powered at 50Hz				
		in-rush	VA	75
		holding	VA	9
of 50/60Hz coil powered at 60Hz				
		in-rush	VA	70
		holding	VA	6.5
of 60Hz coil powered at 60Hz				
		in-rush	VA	75
		holding	VA	9
Dissipation at holding $\leq 20^{\circ}\text{C}$ 50Hz			W	2.5
<b>Max cycles frequency</b>				
Mechanical operations			Cycles/h	3600
<b>Operating times</b>				
Average time for Us control				
in AC				
Closing NO				
		min	ms	8
		max	ms	24
Opening NO				
		min	ms	5
		max	ms	15
<b>UL technical data</b>				
Full-load current (FLA) for three-phase AC motor				
		at 480V	A	21
		at 600V	A	22
Yielded mechanical performance				
for single-phase AC motor				
		at 110/120V	hp	2
		at 230V	hp	5
for three-phase AC motor				
		at 200/208V	hp	7.5
		at 220/230V	hp	7.5
		at 460/480V	hp	15
		at 575/600V	hp	20
<b>General USE</b>				

Contactor

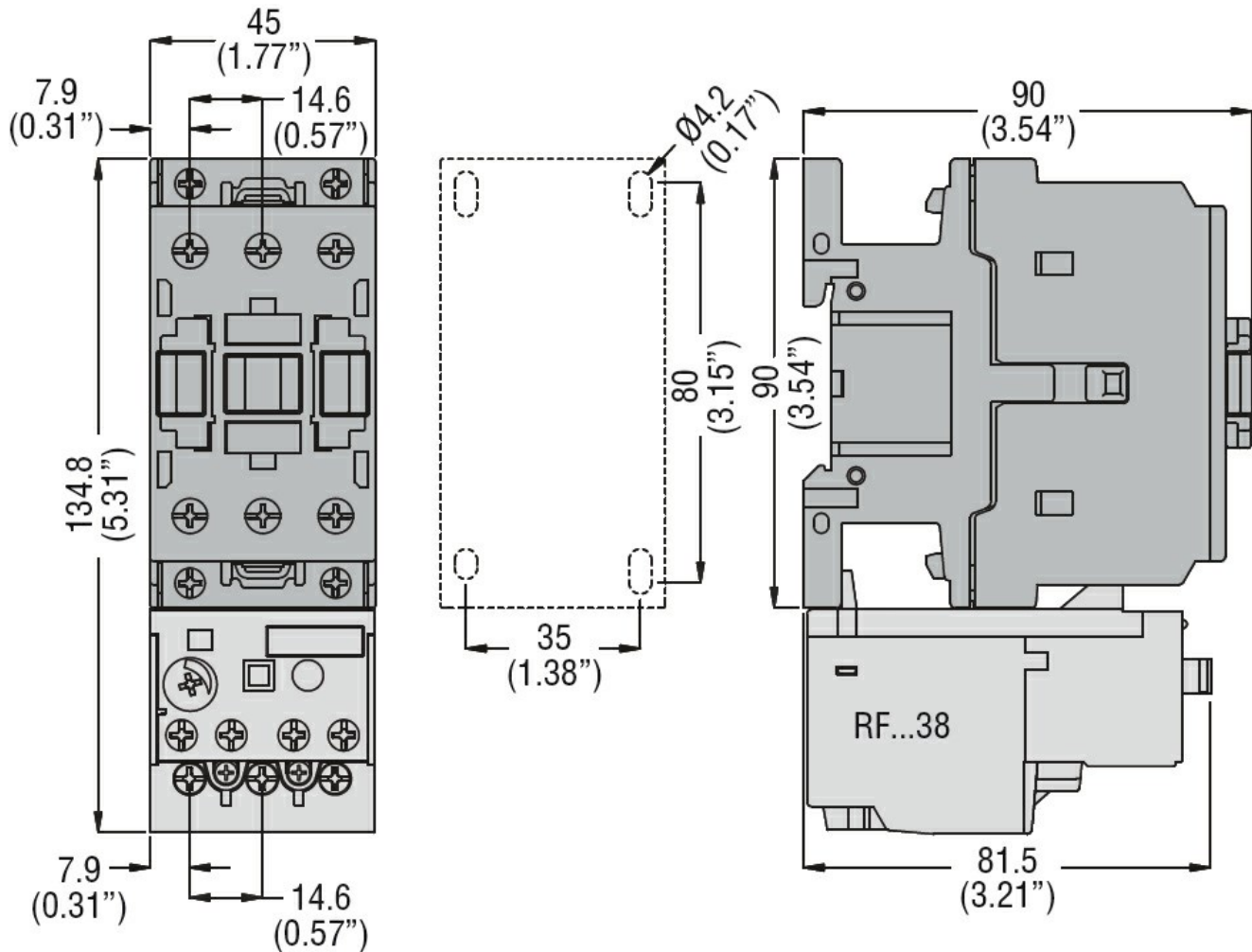
AC current A 32

Other features

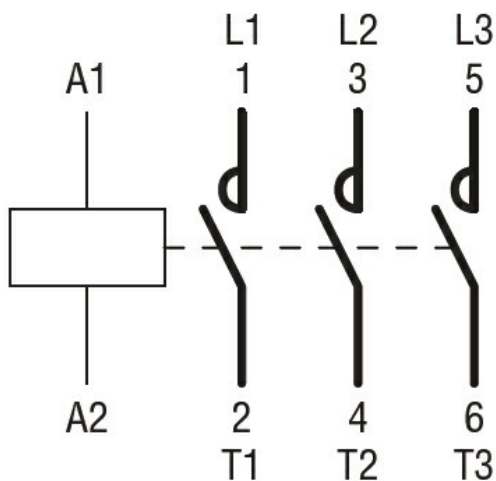
Pollution degree

3

Dimensions



Wiring diagrams



Certifications and compliance

Certifications

CSA C22.2 n° 60947-1

CSA C22.2 n° 60947-4-1

IEC/EN 60947-1

IEC/EN 60947-4-1

UL 60947-1

UL 60947-4-1

Compliance

CCC

cULus

EAC

ETIM 6 classification

EC000066 - Power contactor, AC switching