

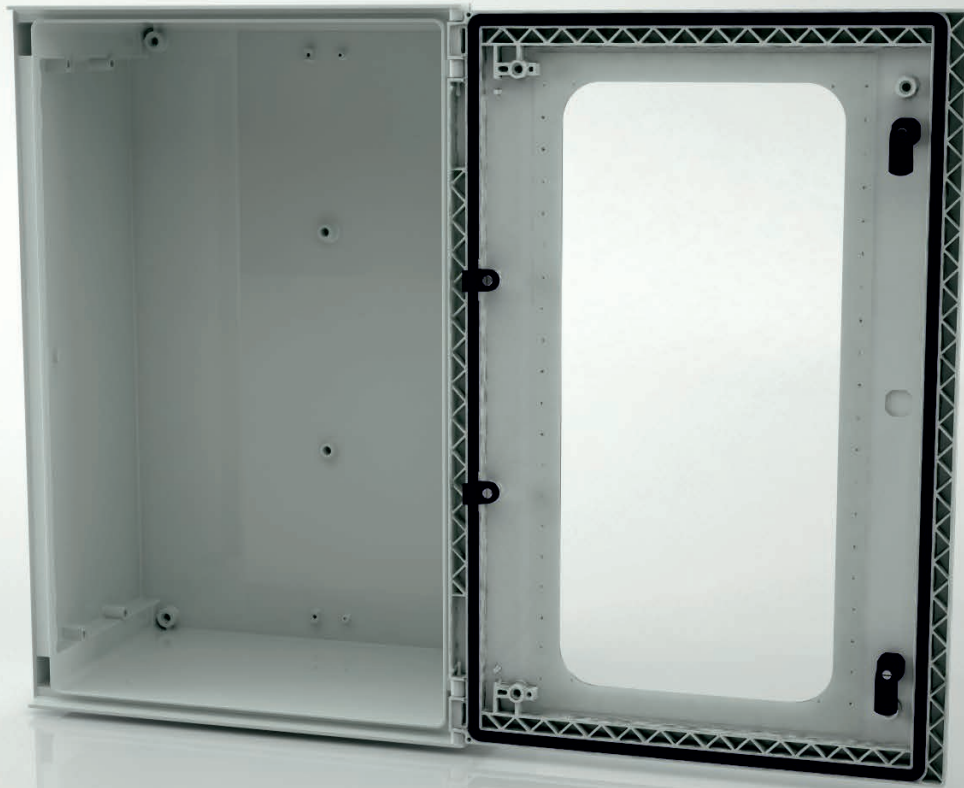


MONOBLOCK INDUSTRIAL ENCLOSURE IP66



BRES-54-P

Polyester enclosure 500 x 400 x 200 mm



FEATURES

SafyBox BRES

- Boxes & Cabinets made from fiber glass reinforced polyester, moulded by hot compression.
- Colour Light Grey RAL 7035
- Self-extinguishability: 960° test withstanding. Halogen free. Double insulation. No electrical contact risks.
- Degree of protection Ip66 UNE 20324 (EN 60529).
- Certification of compliance with IEC62208 enclosure standard. Suitable for indoor or outdoor use.
- Large door opening (180°). Version with plain or glazed door. Reversibility for installation right or left door opening.
- Anti-intruder hinges system.
- Customise service: colour, machining, mounting accessories, locks, company logo.
- 2 lock with double-bar insert or 1 lock with 3 action points and vandalism-proof.
- Version with metallic or polyester mounting plate.
- Resistant to harsh atmospheres.
- Light weight gives an easy installation.
- +10 years. Long life lasting without maintenance under standard environmental conditions.

Code	Description	Height x Width x Depth	Weight
BRES-54-P	Empty standard enclosure light grey with transparent window	500 x 400 x 200 mm	5,25 kg

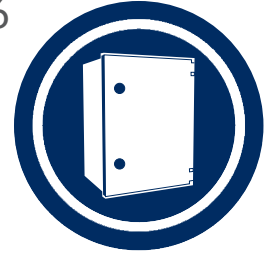




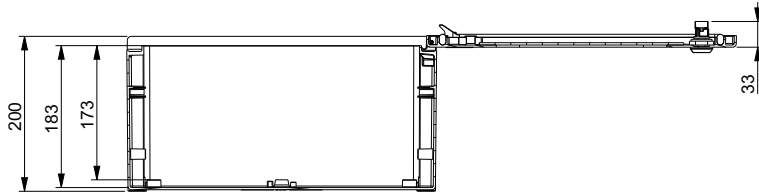
MONOBLOCK INDUSTRIAL ENCLOSURE IP66

BRES-54-P

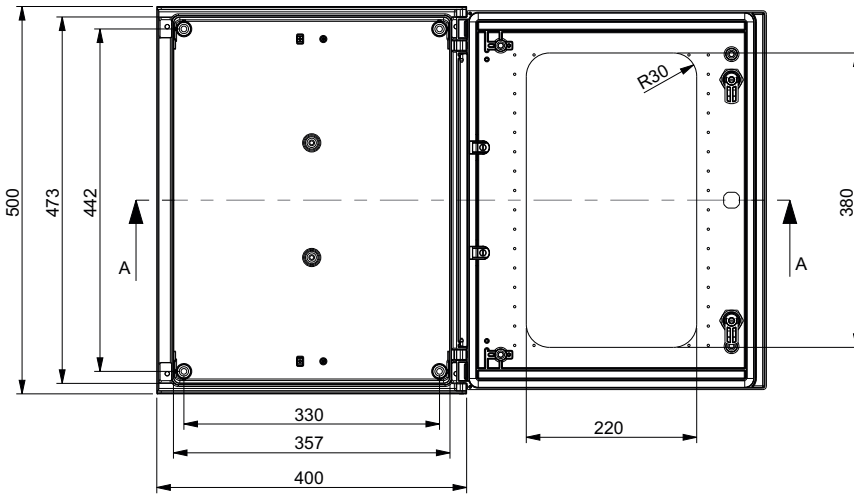
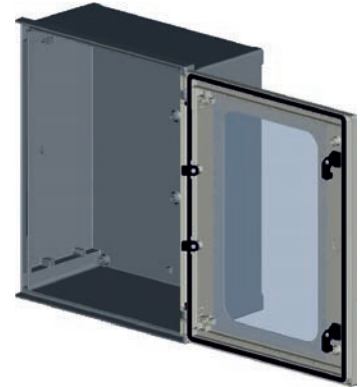
Polyester enclosure 500 x 400 x 200 mm



Standard
IEC
IEC-62208



Section A



Packaging

packaging unit	1	packaging height	501,0 mm	Units per pallet 120 x 80 cm (Height 220 cm)	44
number of doors	1	packaging width	401,0 mm	Units per pallet 110 x 110 cm (Height 220 cm)	50
weight	5,25 kg	packaging depth	201,5 mm	Units per pallet 155 x 112 cm (Height 220 cm)	66

Environmental performance

Minimum temperature	-30 °C	IP dust water protection degree IEC-60529	66
Maximum temperature	70°C	IK impact protection degree IEC-50298	10
Compression resistance	100 kg		

Electrical performance

Nominal tension direct current up to:	1500 VdC
Nominal tension alternative current up to:	1000 VaC
Maximum power dissipation $\Delta T=104^{\circ}F$ (wall surface)	82,9 W

Installation and assembly system

Inside installation	Yes	Wall surface	Yes
Outdoor installation	Yes	Floor mounting	Yes
Flush mounting	No	Pole mounting	Yes