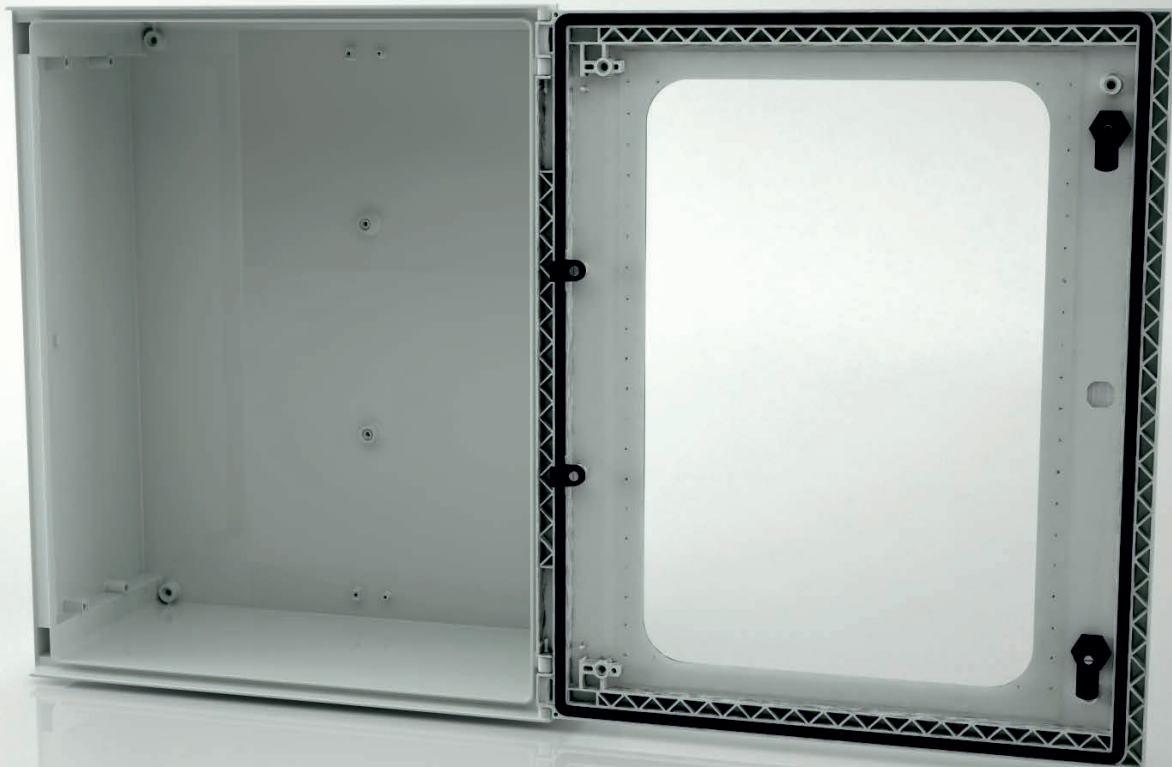




# MONOBLOCK INDUSTRIAL ENCLOSURE IP66

## BRES-86-P

Polyester enclosure 800 x 600 x 300 mm



### FEATURES

## SafyBox BRES

- Boxes & Cabinets made from fiber glass reinforced polyester, moulded by hot compression.
- Colour Light Grey RAL 7035
- Self-extinguishability: 960° test withstanding. Halogen free. Double insulation. No electrical contact risks.
- Degree of protection Ip66 UNE 20324 (EN 60529).
- Certification of compliance with IEC62208 enclosure standard. Suitable for indoor or outdoor use.
- Large door opening (180°). Version with plain or glazed door. Reversibility for installation right or left door opening.
- Anti-intruder hinges system.
- Customise service: colour, machining, mounting accessories, locks, company logo.
- 2 lock with double-bar insert or 1 lock with 3 action points and vandalism-proof.
- Version with metallic or polyester mounting plate.
- Resistant to harsh atmospheres.
- Light weight gives an easy installation.
- +10 years. Long life lasting without maintenance under standard environmental conditions.

| Code      | Description   | Height x Width x Depth | Weight   |
|-----------|---|------------------------|----------|
| BRES-86-P | Empty standard enclosure light grey with transparent window | 800 x 600 x 300 mm     | 12,65 kg |





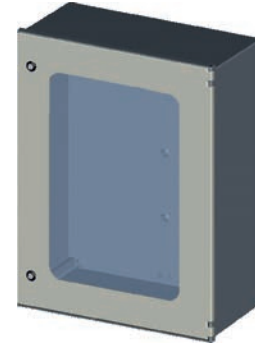
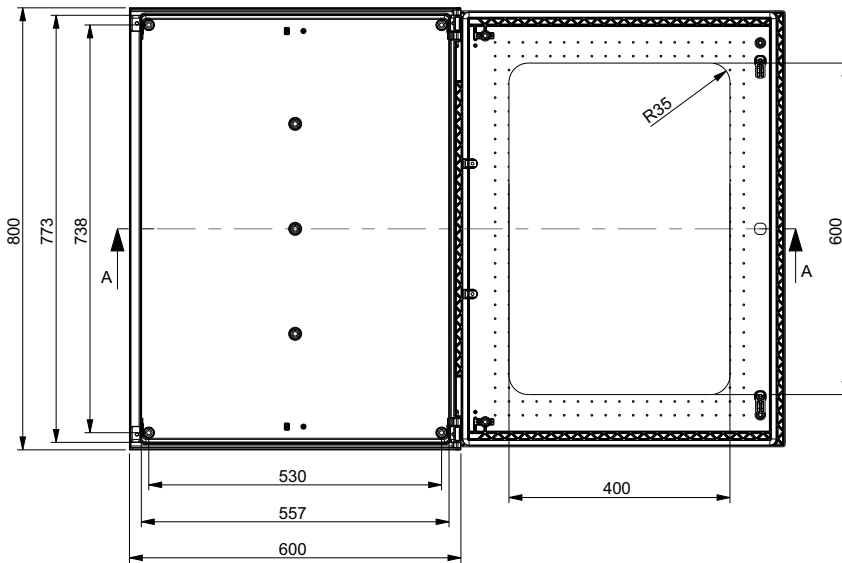
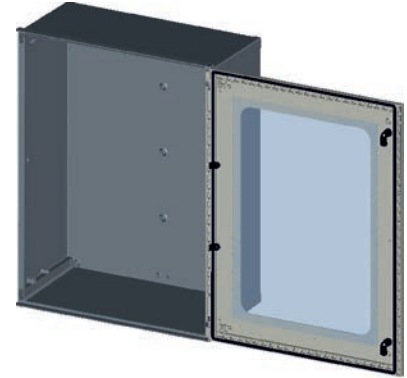
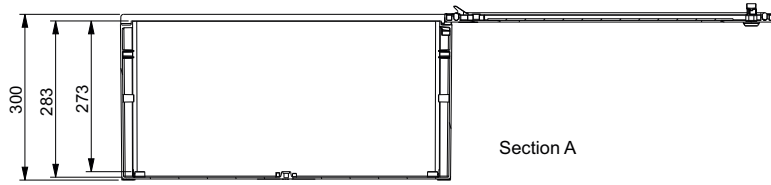
# MONOBLOCK INDUSTRIAL ENCLOSURE IP66

## BRES-86-P

Polyester enclosure 800 x 600 x 300 mm



Standard  
IEC  
IEC-62208



### Packaging

|                 |          |                  |          |   |    |
|-----------------|----------|------------------|----------|---|----|
| packaging unit  | 1        | packaging height | 801,0 mm | Units per pallet 120 x 80 cm (Height 210 cm)  | 12 |
| number of doors | 1        | packaging width  | 601,0 mm | Units per pallet 110 x 110 cm (Height 210 cm) | 12 |
| weight          | 12,65 kg | packaging depth  | 301,5 mm | Units per pallet 162 x 110 cm (Height 210 cm) | 18 |

### Environmental performance

|                        |        |   |    |
|------------------------|--------|---|----|
| Minimum temperature    | -30 °C | IP dust water protection degree IEC-60529 | 66 |
| Maximum temperature    | 70°C   | IK impact protection degree IEC-50298     | 10 |
| Compression resistance | 100 kg |   |    |

### Electrical performance

|  |          |
|--|----------|
| Nominal tension direct current up to:                            | 1500 VdC |
| Nominal tension alternative current up to:                       | 1000 VaC |
| Maximum power dissipation $\Delta T=104^{\circ}F$ (wall surface) | 185,0 W  |

### Installation and assembly system

|                      |     |                |     |
|----------------------|-----|----------------|-----|
| Inside installation  | Yes | Wall surface   | Yes |
| Outdoor installation | Yes | Floor mounting | Yes |
| Flush mounting       | No  | Pole mounting  | Yes |