

ENSTO



CPCF203013T

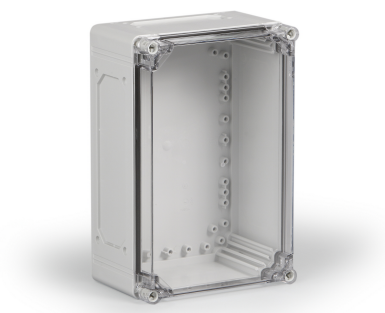
Enclosure PC

Available from the UK's premier enclosure distributor, iLECSYS Ltd,
01844 397300
sales@ilecsys.co.uk

Code	CPCF203013T
GTIN	6418677172205
Name	Enclosure PC Ensto Cubo C Size 200 x 300 x 132 mm, flange knockouts, transparent cover, PC
Description	Ensto Cubo C is a series of medium to large size enclosures available with range knockouts. Special features of the series allow mounting the cover onto the back of the base and include adjustable elevators for the base corner slots, enabling plates and panels to be mounted at any height.
Vendor	Ensto Finland Oy

Services available from iLECSYS

- ✓ CNC Machining
- ✓ CNC Thread Milling
- ✓ Screen Printing
- ✓ Full Assembly



Technical specification

Colors

Color: Grey

Others

Content: Enclosure base, cover, cover screws, mounting screws

Ratings

Degree of protection: IP66/IP67
Flammability rating: UL 746C 5 inch flame test

Dimensions

Depth: 132 mm
Height: 300 mm
Inner depth: 115 mm
Net Weight: 1.35 kg
Outer cover height: 30 mm
Size: 200 x 300 x 132
Volume : 792 cm³
Weight: 1.35 kg

Width: 200 mm

Mechanical

Impact strength: IK 08

Features

Knockouts: 2 x B-flange knockout + 2 x C-flange knockout

Certificates

Standards: EN 62208,GOST R

ETIM

Etim

Colour: Grey

Degree of protection (IP): IP67

Depth: 132 mm

Height: 300 mm

Impact strength: IK08

Material: Plastic

Mounting plate depth-adjustable: True

RAL-number: 7035

Suitable for outdoor set-up: True

Surface finishing: Untreated

Wall fastening possible: True

With glazed door: True

Packaging

Default package

Unit: PCE

Package size: 1

Depth: 331 mm

Width: 231 mm

Height: 208 mm

Weight: 1.52 kg

Volume: 15.90 l