

# ENSTO



CPCF303018T

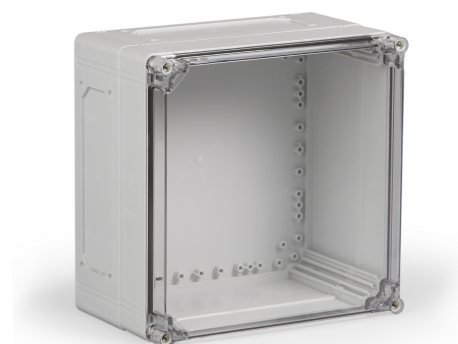
Enclosure PC

Available from the UK's premier enclosure distributor, iLECSYS Ltd,  
01844 397300  
sales@ilecsys.co.uk

Code	CPCF303018T
GTIN	6418677182266
Name	Enclosure PC Ensto Cubo C Size 300 x 300 x 185 mm, flange knockouts, transparent cover, PC
Description	Ensto Cubo C is a series of medium to large size enclosures available with range knockouts. Special features of the series allow mounting the cover onto the back of the base and include adjustable elevators for the base corner slots, enabling plates and panels to be mounted at any height.
Vendor	Ensto Finland Oy

#### Services available from iLECSYS

- ✓ CNC Machining
- ✓ CNC Thread Milling
- ✓ Screen Printing
- ✓ Full Assembly



## Technical specification

### Colors

Color: Grey

### Others

Content: Enclosure base, cover, extension frame, cover screws, mounting screws, screws for the extension frame

### Ratings

Degree of protection: IP66/IP67  
Flammability rating: UL 746C 5 inch flame test

### Dimensions

Depth: 187 mm  
Height: 300 mm  
Inner depth: 170 mm  
Net Weight: 2.19 kg  
Outer base depth: 157 mm  
Outer cover height: 30 mm  
Size: 300 x 300 x 187

Volume :	1665 cm <sup>3</sup>
Weight:	2.19 kg
Width:	300 mm

## Mechanical

Impact strength:	IK 08
------------------	-------

## Features

Knockouts:	4 x F2 knockout
------------	-----------------

## Certificates

Standards:	EN 62208,GOST R
------------	-----------------

## ETIM

---

### Etim

Colour:	Grey
Degree of protection (IP):	IP67
Depth:	187 mm
Height:	300 mm
Impact strength:	IK08
Material:	Plastic
Mounting plate depth-adjustable:	True
RAL-number:	7035
Suitable for outdoor set-up:	True
Surface finishing:	Untreated
Wall fastening possible:	True
With glazed door:	True

## Packaging

---

### Default package

Unit:	PCE
Package size:	1
Depth:	331 mm
Width:	331 mm
Height:	208 mm
Weight:	2.44 kg
Volume:	22.79 l