

ENSTO



OPCP202013T

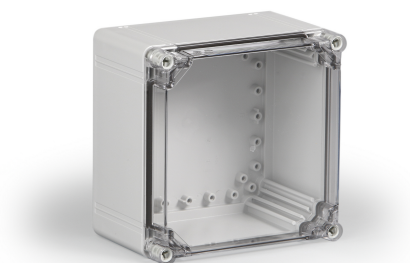
Enclosure PC

Available from the UK's premier enclosure distributor, iLECSYS Ltd,
01844 397300
sales@ilecsys.co.uk

Code	OPCP202013T
GTIN	6418677184345
Name	Enclosure PC Ensto Cubo O Size 200 x 200 x 132 mm, plain sides, transparent cover, PC
Description	Ensto Cubo O is a series of medium to large size enclosures available with plain sides or metric knockouts. Special features of the series allow mounting the cover onto the back of the base and include adjustable elevators for the base corner slots, enabling plates and panels to be mounted at any height.
Vendor	Ensto Finland Oy

Services available from iLECSYS

- ✓ CNC Machining
- ✓ CNC Thread Milling
- ✓ Screen Printing
- ✓ Full Assembly



Technical specification

Others

Content: Enclosure base, cover, cover screws, mounting screws

Ratings

Degree of protection: IP66/IP67
Flammability rating: UL 746C 5 inch flame test

Dimensions

Depth: 132 mm
Height: 200 mm
Inner depth: 115 mm
Net Weight: 1.04 kg
Outer cover height: 30 mm
Size: 200 x 200 x 132
Volume : 528 cm³
Weight: 1.04 kg
Width: 200 mm

Mechanical

Impact strength: IK 08

Certificates

Standards: EN 62208,GOST R

ETIM

Etim

Colour: Grey
Degree of protection (IP): IP67
Depth: 132 mm
Height: 200 mm
Impact strength: IK08
Material: Plastic
Mounting plate depth-adjustable: True
RAL-number: 7035
Suitable for outdoor set-up: True
Surface finishing: Untreated
Wall fastening possible: True
With glazed door: True

Packaging

Default package

Unit: PCE
Package size: 1
Depth: 256 mm
Width: 231 mm
Height: 208 mm
Weight: 1.19 kg
Volume: 12.30 l