

ENSTO



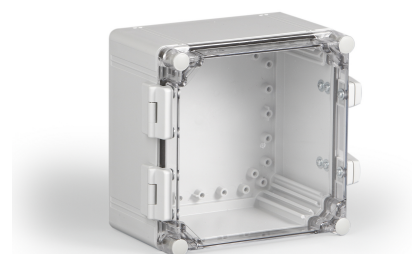
WPCP202013T
Cabinet wall installation PC

Available from the UK's premier enclosure distributor, iLECSYS Ltd,
01844 397300
sales@ilecsys.co.uk

Code WPCP202013T
GTIN 6418677174384
Name Cabinet wall installation PC Ensto Cubo W
Size 200 x 200 x 132, with hinges and latches, transparent cover, PC
Description Ensto Cubo W is a series of wall-mounted cabinets that have pre-assembled hinges and quick release latches. The cabinets can be easily sealed or locked either by screw-locking them or with a padlock. The series is based on the enclosure series Ensto Cubo O and C.
Vendor Ensto Finland Oy

Services available from iLECSYS

- ✓ CNC Machining
- ✓ CNC Thread Milling
- ✓ Screen Printing
- ✓ Full Assembly



Technical specification

Others

Content: Enclosure base, cover, mounting screws

Ratings

Degree of protection: IP66/IP67
Flammability rating: UL 746C 5 inch flame test

Dimensions

Depth: 132 mm
Height: 200 mm
Inner depth: 115 mm
Net Weight: 1.15 kg
Outer cover height: 30 mm
Size: 200 x 200 x 132
Volume : 528 cm³
Weight: 1.15 kg
Width: 200 mm

Mechanical

Impact strength: IK 08

Certificates

Standards: EN 62208,GOST R

ETIM

Etim

Colour: Grey
Degree of protection (IP): IP67
Depth: 132 mm
Height: 200 mm
Impact strength: IK08
Material: Plastic
Mounting plate depth-adjustable: True
RAL-number: 7035
Suitable for outdoor set-up: True
Surface finishing: Untreated
Wall fastening possible: True
With glazed door: True

Packaging

Default package

Unit: PCE
Package size: 1
Depth: 256 mm
Width: 231 mm
Height: 208 mm
Weight: 1.30 kg
Volume: 12.30 l