

ENSTO



WPCP203018T

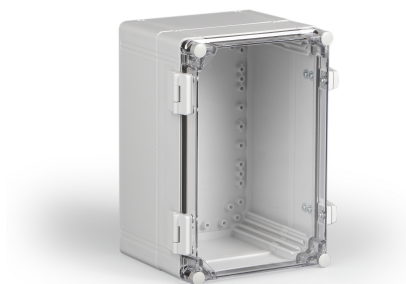
Cabinet wall installation PC

Available from the UK's premier enclosure distributor, iLECSYS Ltd,
01844 397300
sales@ilecsys.co.uk

Code	WPCP203018T
GTIN	6418677174551
Name	Cabinet wall installation PC Ensto Cubo W Size 200 x 300 x 185, with hinges and latches, transparent cover, PC.
Description	Ensto Cubo W is a series of wall-mounted cabinets that have pre-assembled hinges and quick release latches. The cabinets can be easily sealed or locked either by screw-locking them or with a padlock. The series is based on the enclosure series Ensto Cubo O and C.
Vendor	Ensto Finland Oy

Services available from iLECSYS

- ✓ CNC Machining
- ✓ CNC Thread Milling
- ✓ Screen Printing
- ✓ Full Assembly



Technical specification

Others

Content:	Enclosure base, cover, extension frame, mounting screws, screws for the extension frame
----------	-----------------------------------------------------------------------------------------

Ratings

Degree of protection:	IP66/IP67
Flammability rating:	UL 746C 5 inch flame test

Dimensions

Depth:	187 mm
Height:	300 mm
Inner depth:	170 mm
Net Weight:	1.82 kg
Outer base depth:	157 mm
Outer cover height:	30 mm
Size:	200 x 300 x 187
Volume :	1110 cm ³
Weight:	1.82 kg
Width:	200 mm

Mechanical

Impact strength: IK 08

Certificates

Standards: EN 62208,GOST R

ETIM

Etim

Colour: Grey

Degree of protection (IP): IP67

Depth: 187 mm

Height: 300 mm

Impact strength: IK08

Material: Plastic

Mounting plate depth-adjustable: True

RAL-number: 7035

Suitable for outdoor set-up: True

Surface finishing: Untreated

Wall fastening possible: True

With glazed door: True

Packaging

Default package

Unit: PCE

Package size: 1

Depth: 331 mm

Width: 231 mm

Height: 208 mm

Weight: 1.99 kg

Volume: 15.90 l