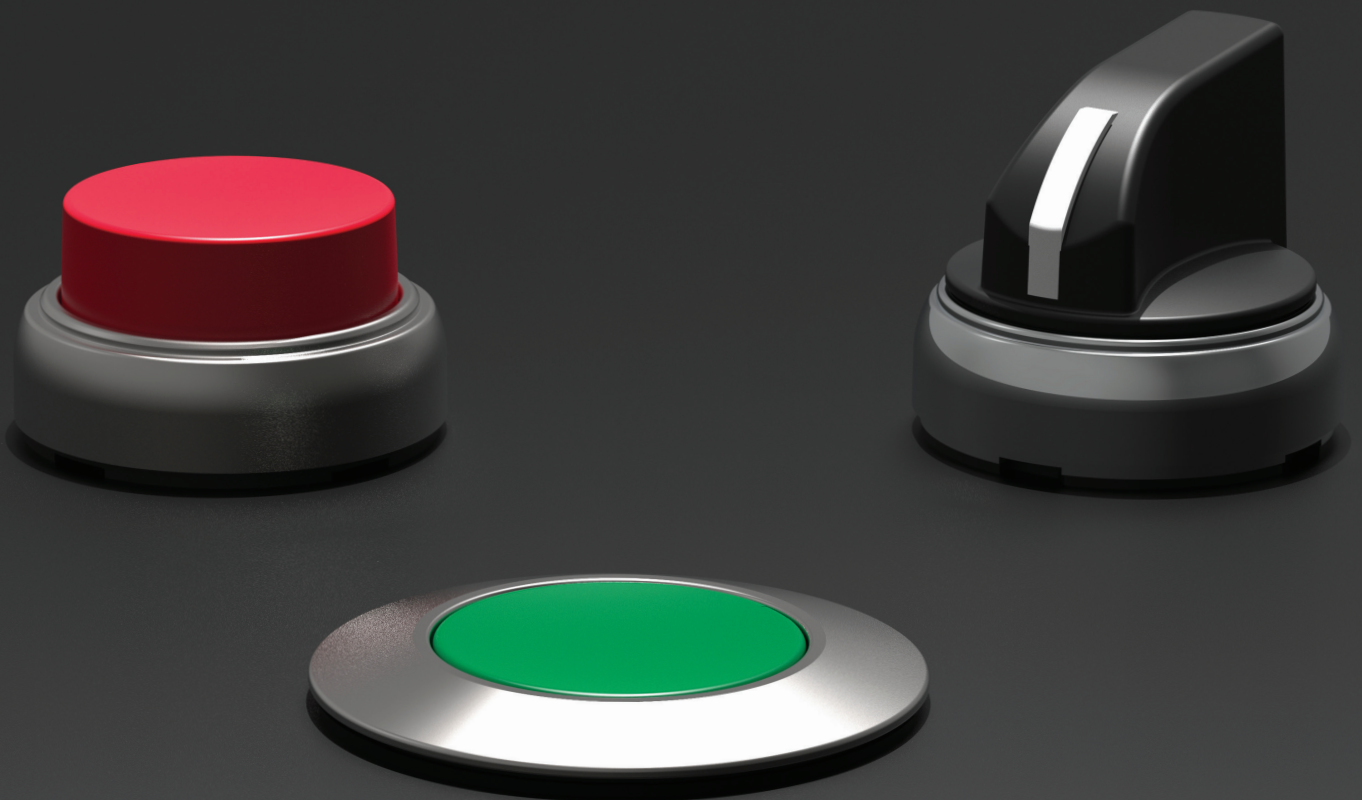
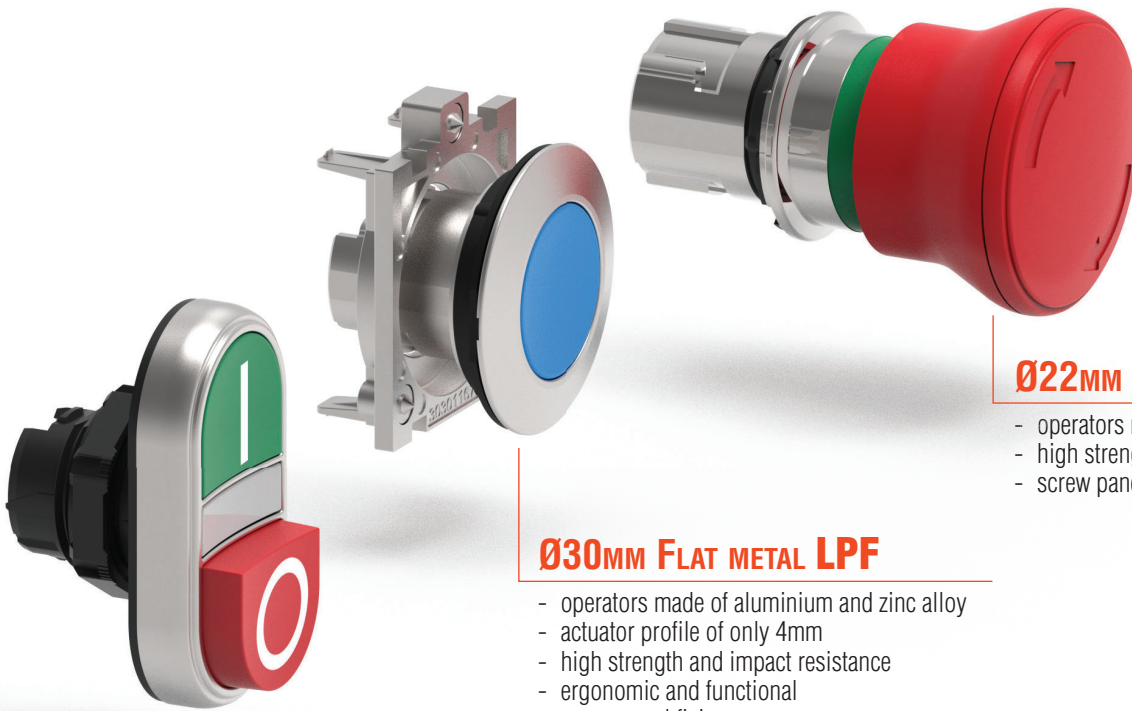


 PUSHBUTTONS
AND SELECTORS



IT'S TIME FOR **PL**atinum



Ø22MM METAL LPS

- operators made of aluminium and zinc alloy
- high strength and impact resistance
- screw panel fixing.

Ø30MM FLAT METAL LPF

- operators made of aluminium and zinc alloy
- actuator profile of only 4mm
- high strength and impact resistance
- ergonomic and functional
- screw panel fixing.

Ø22MM CHROMED PLASTIC LPC

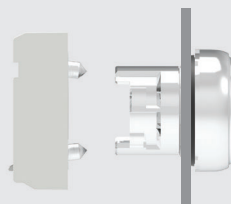
- operators made of polyamide with external chrome ring
- snap-on fast installation of the mounting base and contact elements
- panel fixing by threaded ring.

■ QUICK AND EASY ACTUATOR INSTALLATION

LPS

Ø22mm METAL

- The operator **fits** into the Ø22mm panel hole with an adapter that retains it securely by two **screws**.



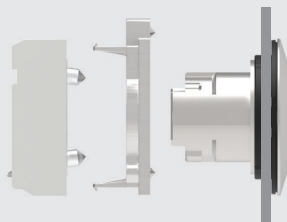
- The operator has a **seal** with **rubber grommets** which ensure stable fitting.



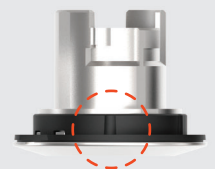
LPF

Ø30mm FLAT METAL

- The operator **fits** into the Ø30mm panel hole with an adapter that retains it securely by two **screws**.



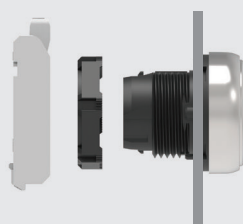
- The operator has a **seal** with **rubber grommets** which ensure stable fitting.



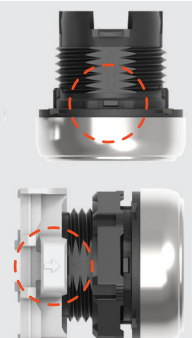
LPC

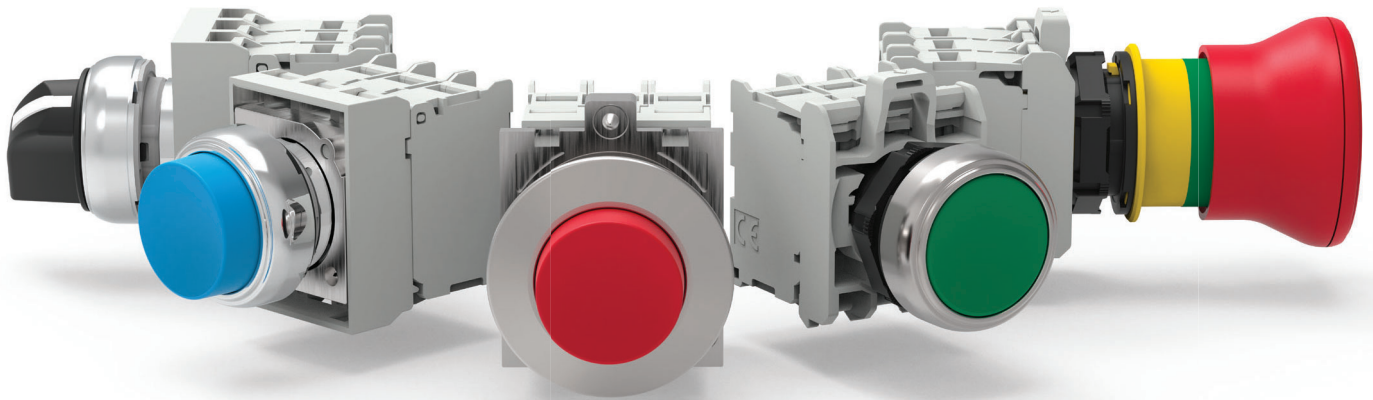
Ø22mm CHROMED PLASTIC

- The operator mounts to the Ø22mm panel hole with a **threaded ring**. The mounting adapter **snaps** onto the back of the operator itself.



- The operator has a **seal** with **rubber grommets** to ensure stable fitting.
- The anti-rotation lug on the operator collapses into the seal to enable installation even to round holes without an anti-rotation notch.
- The mounting adapter and operators have **clearly visible reference marks** to facilitate snapping the operators onto the base.





HIGH DEGREE OF PROTECTION: IP66, IP67 AND IP69K

The actuators have been tested to guarantee a degree of protection per IEC/EN IP66, IP67, IP69K and per UL Type 4X, appropriate for use even in extreme ambient conditions.

ELEGANT STYLE AND ERGONOMIC DESIGN

All the series elements have an ergonomic design and, at the same time, particular care has been given to the finest detail aesthetics.

LONG ACTUATOR MECHANICAL LIFE

High performance characteristics assure 5,000,000 cycle mechanical life for spring return actuators, 1,000,000 for double and triple touch units and 300,000 for emergency-stop types.

MATERIALS RESISTANT TO OILS, SOLVENTS AND HYDROCARBONS

CUSTOMIZATION

To facilitate warehouse management, it is possible to purchase spring return or push-push button actuators without caps or lenses and at the same time caps and lenses as spare parts. This allows for custom buttons to be completed from stock.

HIGH STANDARDIZATION

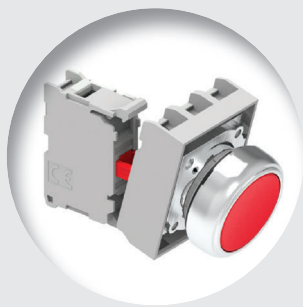
Contact elements, LED light elements and a wide range of accessories are common to all types of the series.

USAGE AT EXTREME TEMPERATURE CONDITIONS

Operation temperature range between -25° and $+70^{\circ}\text{C}$.

CERTIFICATIONS

cULus, EAC, RINA and CCC.

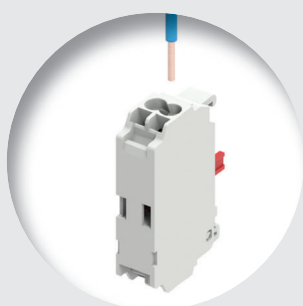


■ CONTACT ELEMENTS

- **Common to all PLATINUM series operators.**
- Miniaturised size
- High electric conductivity - 5V 1mA
- Up to 9 contact elements can be installed
- Versions with screw, spring-clamp (push-in), Faston and base mount contact blocks for use with LPZP control stations
- Contact operation: double breaking action, direct (positive) action operation and wiping effect.
- Electrical contact and LED elements are **snapped onto** the mounting adapter
- **The activation of the middle contact is standard supplied** on all non-illuminated spring return and push-push button or selector switch actuators.

■ HIGH-LUMINOSITY LED ELEMENTS

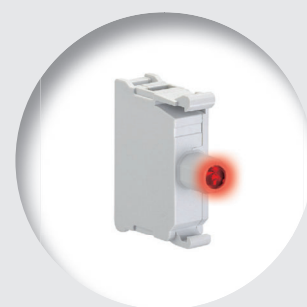
- Miniaturised size
- Long electrical life: 100,000h
- Versions with screw, spring-clamp (push-in) and for bottom of LPZP control stations
- Overvoltage protection
- Withstand vibrations
- Protection against stray currents in wiring
- Flickering phenomenon reduction
- Steady and flashing light versions
- Supply voltages: 12...30VAC/DC, 85...140VAC, 185...265VAC
- Test elements installed alongside and connected with the relative LED element allow checking if all LED elements of the installation are working properly.



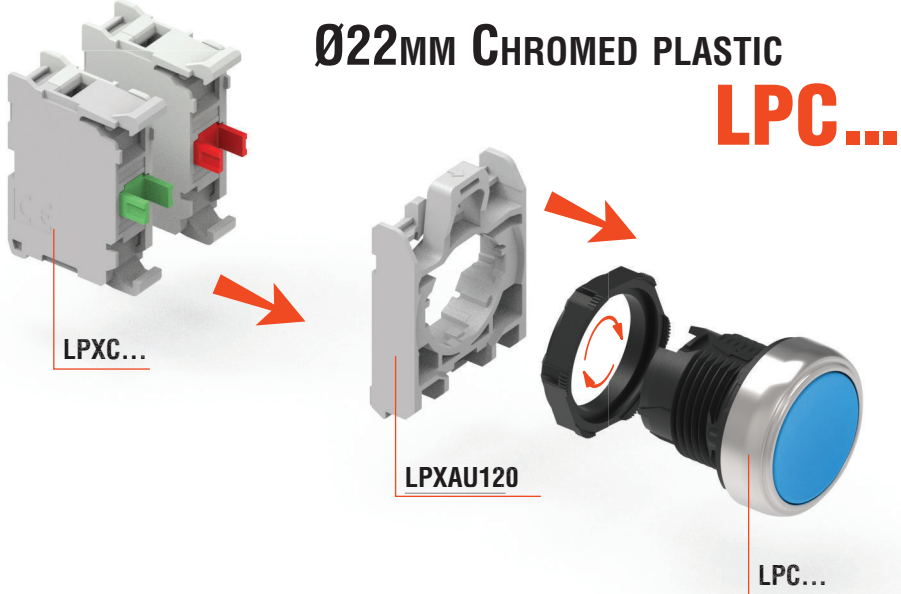
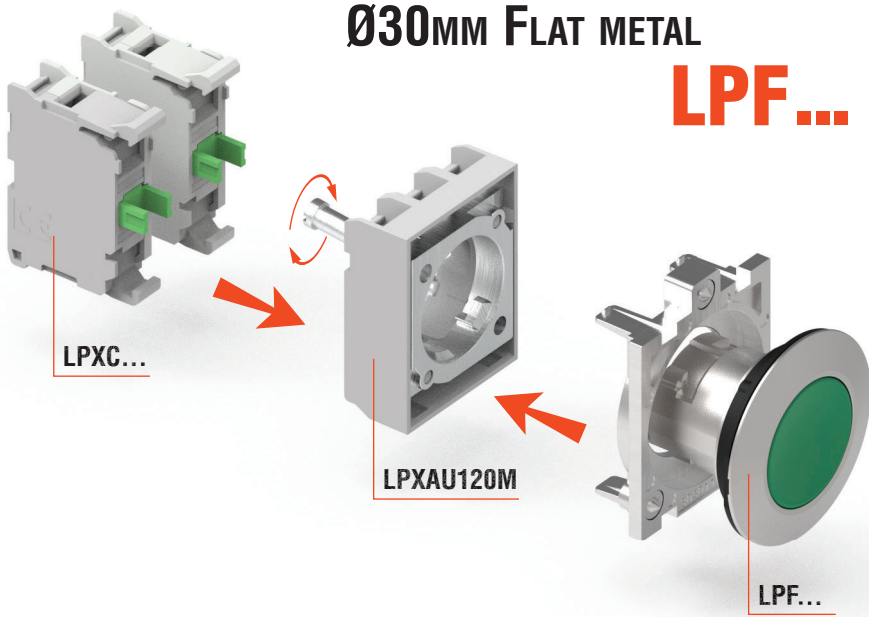
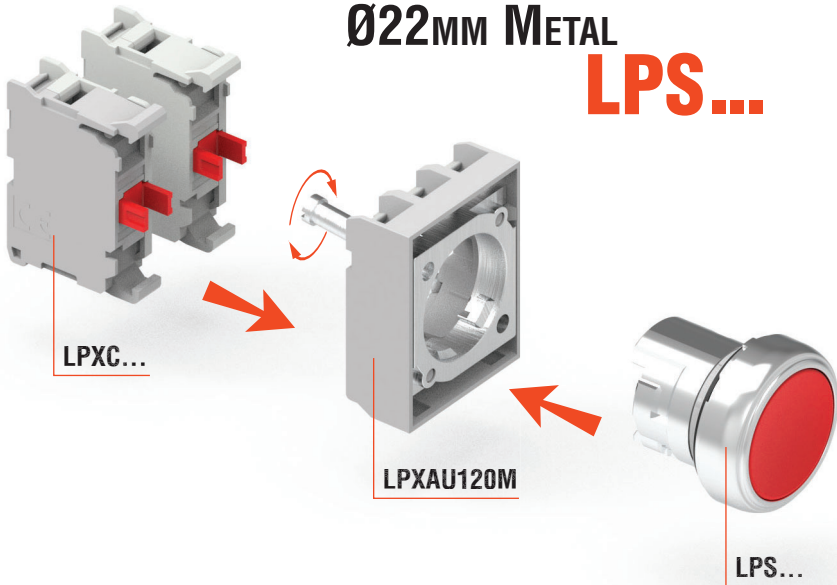
■ CONTACT AND LED ELEMENTS WITH SPRING-CLAMP (PUSH-IN) TECHNOLOGY

PUSH-IN technology reduces the time required to connect stiff cables and cables with crimped terminals. The wire simply inserts into the clamp for a secure, sealed connection - **no screwdriver needed!** The clamping force is long-lasting and unaffected by vibration and impact.

Push-in technology



MODULARITY



PUSHBUTTONS

SPRING RETURN

Colour	Ø22mm metal	Ø30mm flat metal	Ø22mm chromed plastic
--------	-------------	------------------	-----------------------

FLUSH



■	LPSB102	LPFB102	LPCB102
■	LPSB103	LPFB103	LPCB103
■	LPSB104	LPFB104	LPCB104
■	LPSB105	LPFB105	LPCB105
■	LPSB106	LPFB106	LPCB106
□	LPSB108	LPFB108	LPCB108

EXTENDED



■	LPSB202	LPFB202	LPCB202
■	LPSB203	LPFB203	LPCB203
■	LPSB204	LPFB204	LPCB204
■	LPSB205	LPFB205	LPCB205
■	LPSB206	LPFB206	LPCB206
□	LPSB208	LPFB208	LPCB208

SHROUDED

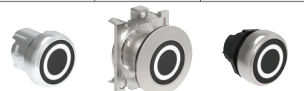


■	LPSB302	—	LPCB302
■	LPSB303	—	LPCB303
■	LPSB304	—	LPCB304
■	LPSB305	—	LPCB305
■	LPSB306	—	LPCB306
□	LPSB308	—	LPCB308

SPRING RETURN WITH SYMBOL

Colour	Symbol	Ø22mm metal	Ø30mm flat metal	Ø22mm chromed plastic
--------	--------	-------------	------------------	-----------------------

FLUSH



■	0	LPSB1102	LPFB1102	LPCB1102
■	0	LPSB1104	LPFB1104	LPCB1104
■	I	LPSB1113	LPFB1113	LPCB1113
□	I	LPSB1118	LPFB1118	LPCB1118
■	II	LPSB1123	LPFB1123	LPCB1123
□	II	LPSB1128	LPFB1128	LPCB1128
■	STOP	LPSB1132	LPFB1132	LPCB1132
■	STOP	LPSB1134	LPFB1134	LPCB1134
■	←	LPSB1142	LPFB1142	LPCB1142
□	←	LPSB1148	LPFB1148	LPCB1148
■	↑	LPSB1152	LPFB1152	LPCB1152
□	↑	LPSB1158	LPFB1158	LPCB1158
■	START	LPSB1163	LPFB1163	LPCB1163
□	START	LPSB1168	LPFB1168	LPCB1168
■	R	LPSB1176	LPFB1176	LPCB1176
□	R	LPSB1178	LPFB1178	LPCB1178
■	RESET	LPSB1196	LPFB1196	LPCB1196
■	↔	LPSB1502	LPFB1502	LPCB1502
■	↔	LPSB1512	LPFB1512	LPCB1512

EXTENDED



■	0	LPSB2102	LPFB2102	LPCB2102
■	0	LPSB2104	LPFB2104	LPCB2104
■	STOP	LPSB2132	LPFB2132	LPCB2132
■	STOP	LPSB2134	LPFB2134	LPCB2134

ILLUMINATED, SPRING RETURN

Colour	Ø22mm metal	Ø30mm flat metal	Ø22mm chromed plastic
--------	-------------	------------------	-----------------------

FLUSH



■	LPSBL103	LPFBL103	LPCBL103
■	LPSBL104	LPFBL104	LPCBL104
■	LPSBL105	LPFBL105	LPCBL105
■	LPSBL106	LPFBL106	LPCBL106
□	Transp.	LPSBL107	LPFBL107

EXTENDED



■	LPSBL203	LPFBL203	LPCBL203
■	LPSBL204	LPFBL204	LPCBL204
■	LPSBL205	LPFBL205	LPCBL205
■	LPSBL206	LPFBL206	LPCBL206
□	Transp.	LPSBL207	LPFBL207

PUSH-PUSH

Colour	Ø22mm metal	Ø30mm flat metal	Ø22mm chromed plastic
--------	-------------	------------------	-----------------------

FLUSH



■	LPSQ102	LPFQ102	LPCQ102
■	LPSQ103	LPFQ103	LPCQ103
■	LPSQ104	LPFQ104	LPCQ104
■	LPSQ105	LPFQ105	LPCQ105
■	LPSQ106	LPFQ106	LPCQ106
□	LPSQ108	LPFQ108	LPCQ108

EXTENDED



■	LPSQ202	LPFQ202	LPCQ202
■	LPSQ203	LPFQ203	LPCQ203
■	LPSQ204	LPFQ204	LPCQ204
■	LPSQ205	LPFQ205	LPCQ205
■	LPSQ206	LPFQ206	LPCQ206
□	LPSQ208	LPFQ208	LPCQ208

ILLUMINATED, PUSH-PUSH

Colour	Ø22mm metal	Ø30mm flat metal	Ø22mm chromed plastic
--------	-------------	------------------	-----------------------

FLUSH



■	LPSQL103	LPFQL103	LPCQL103
■	LPSQL104	LPFQL104	LPCQL104
■	LPSQL105	LPFQL105	LPCQL105
■	LPSQL106	LPFQL106	LPCQL106
□	Transp.	LPSQL107	LPFQL107

EXTENDED



■	LPSQL203	LPFQL203	LPCQL203
■	LPSQL204	LPFQL204	LPCQL204
■	LPSQL205	LPFQL205	LPCQL205
■	LPSQL206	LPFQL206	LPCQL206
□	Transp.	LPSQL207	LPFQL207

MECHANICAL RESET, SPRING RETURN

Colour	Ø22mm metal	Ø22mm chromed plastic
--------	-------------	-----------------------

FLUSH



■	LPSR1002	LPCR1002
■	LPSR1003	LPCR1003
■	LPSR1004	LPCR1004
■	LPSR1006	LPCR1006
■ (RESET)	LPSR1196 [Ⓢ]	LPCR1196 [Ⓢ]

EXTENDED



■	LPSR2004	LPCR2004
---	----------	----------

[Ⓢ] With "RESET" caption on actuator.
E.g. Not suitable for LPZ... control stations.

PILOT LIGHT HEADS

Colour	Ø22mm metal	Ø30mm flat metal	Ø22mm plastic
--------	-------------	------------------	---------------



■	LPPL3	LPFL3	LPL3
■	LPPL4	LPFL4	LPL4
■	LPPL5	LPFL5	LPL5
■	LPPL6	LPFL6	LPL6
□	Transp.	LPPL7	LPFL7
□ ⚡	Transp.	LPPL1187 [Ⓢ]	LPFL1187 [Ⓢ]

[Ⓢ] With symbol indicating dangerous voltage (IEC/EN/BS 60417 5036-4).

PILOT LIGHTS

LED INTEGRATED MONOBLOCK, STEADY LIGHT

LED colour	PLASTIC Ø22mm			
	12VAC/DC	24VAC/DC	48VAC/DC	110...120VAC



■	LPMLA1	LPMLB1	LPMLD1	LPMLE1
■	LPMLA3	LPMLB3	LPMLD3	LPMLE3
■	LPMLA4	LPMLB4	LPMLD4	LPMLE4
■	LPMLA5	LPMLB5	LPMLD5	LPMLE5
■	LPMLA6	LPMLB6	LPMLD6	LPMLE6
□	Transp.	LPMLA7	LPMLB7	LPMLD7

LED colour	230VAC	380...415VAC	110...125VDC	220VDC
------------	--------	--------------	--------------	--------



■	LPMLM1	LPMLP1	LPMLF1	LPMLN1
■	LPMLM3	LPMLP3	LPMLF3	LPMLN3
■	LPMLM4	LPMLP4	LPMLF4	LPMLN4
■	LPMLM5	LPMLP5	LPMLF5	LPMLN5
■	LPMLM6	LPMLP6	LPMLF6	LPMLN6
□	Transp.	LPMLM7	LPMLP7	LPMLF7

SELECTOR SWITCHES

LEVER

Type	Ø22mm metal	Ø30mm flat metal	Ø22mm chromed plastic
2 POSITIONS			
	LPSS120	LPFS120	LPCS120
	LPSS121	LPFS121	LPCS121
3 POSITIONS			
	LPSS130	LPFS130	LPCS130
	LPSS131	LPFS131	LPCS131
	LPSS132	LPFS132	LPCS132
	LPSS133	LPFS133	LPCS133

LONG LEVER

Type	Ø22mm metal	Ø30mm flat metal	Ø22mm chromed plastic
2 POSITIONS			
	LPSS220	LPFS220	LPCS220
	LPSS221	LPFS221	LPCS221
3 POSITIONS			
	LPSS230	LPFS230	LPCS230
	LPSS231	LPFS231	LPCS231
	LPSS232	LPFS232	LPCS232
	LPSS233	LPFS233	LPCS233

ILLUMINATED, LEVER

Type	Colour	Ø22mm metal	Ø30mm flat metal	Ø22mm chromed plastic
2 POSITIONS				
	■	LPSSL1203	LPFSL1203	LPCSL1203
	■	LPSSL1204	LPFSL1204	LPCSL1204
	■	LPSSL1205	LPFSL1205	LPCSL1205
	■	LPSSL1206	LPFSL1206	LPCSL1206
	□ Transp.	LPSSL1208	LPFSL1208	LPCSL1208
	■	LPSSL1213	LPFSL1213	LPCSL1213
	■	LPSSL1214	LPFSL1214	LPCSL1214
	■	LPSSL1215	LPFSL1215	LPCSL1215
	■	LPSSL1216	LPFSL1216	LPCSL1216
	□ Transp.	LPSSL1218	LPFSL1218	LPCSL1218
3 POSITIONS				
	■	LPSSL1303	LPFSL1303	LPCSL1303
	■	LPSSL1304	LPFSL1304	LPCSL1304
	■	LPSSL1305	LPFSL1305	LPCSL1305
	■	LPSSL1306	LPFSL1306	LPCSL1306
	□ Transp.	LPSSL1308	LPFSL1308	LPCSL1308
	■	LPSSL1313	LPFSL1313	LPCSL1313
	■	LPSSL1314	LPFSL1314	LPCSL1314
	■	LPSSL1315	LPFSL1315	LPCSL1315
	■	LPSSL1316	LPFSL1316	LPCSL1316
	□ Transp.	LPSSL1318	LPFSL1318	LPCSL1318
	■	LPSSL1323	LPFSL1323	LPCSL1323
	■	LPSSL1324	LPFSL1324	LPCSL1324
	■	LPSSL1325	LPFSL1325	LPCSL1325
	■	LPSSL1326	LPFSL1326	LPCSL1326
	□ Transp.	LPSSL1328	LPFSL1328	LPCSL1328
	■	LPSSL1333	LPFSL1333	LPCSL1333
	■	LPSSL1334	LPFSL1334	LPCSL1334
	■	LPSSL1335	LPFSL1335	LPCSL1335
	■	LPSSL1336	LPFSL1336	LPCSL1336
	□ Transp.	LPSSL1338	LPFSL1338	LPCSL1338

KNOB

Type	Ø22mm metal	Ø30mm flat metal	Ø22mm chromed plastic
2 POSITIONS			
	LPSS420	LPFS420	LPCS420
	LPSS421	LPFS421	LPCS421
3 POSITIONS			
	LPSS430	LPFS430	LPCS430
	LPSS431	LPFS431	LPCS431
	LPSS432	LPFS432	LPCS432
	LPSS433	LPFS433	LPCS433

KEY

Type	Ø22mm metal	Ø30mm flat metal	Ø22mm chromed plastic
2 POSITIONS			
	LPSS320	LPFS320	LPCS320
	LPSS320R®	LPFS320R®	LPCS320R®
	LPSS321	LPFS321	LPCS321
	LPSS321R®	LPFS321R®	LPCS321R®
	LPSS340	LPFS340	LPCS340
	LPSS340R®	LPFS340R®	LPCS340R®
3 POSITIONS			
	LPSS330	LPFS330	LPCS330
	LPSS330R®	LPFS330R®	LPCS330R®
	LPSS331	LPFS331	LPCS331
	LPSS331R®	LPFS331R®	LPCS331R®
	LPSS332	LPFS332	LPCS332
	LPSS332R®	LPFS332R®	LPCS332R®
	LPSS333	LPFS333	LPCS333
	LPSS333R®	LPFS333R®	LPCS333R®
	LPSS350	LPFS350	LPCS350
	LPSS350R®	LPFS350R®	LPCS350R®
	LPSS360	LPFS360	LPCS360
	LPSS360R®	LPFS360R®	LPCS360R®
	LPSS370	LPFS370	LPCS370
	LPSS370R®	LPFS370R®	LPCS370R®
	LPSS380	LPFS380	LPCS380
	LPSS380R®	LPFS380R®	LPCS380R®
	LPSS390	LPFS390	LPCS390
	LPSS390R®	LPFS390R®	LPCS390R®

Selector switch type of positions

	maintained position		spring return position		key extraction position
--	---------------------	--	------------------------	--	-------------------------

POTENTIOMETERS

MONOBLOCK

Resistance value	Ø22mm chromed plastic
SINGLE-TURN	
1kΩ	LPCPA001
2.5kΩ	LPCPA002
5kΩ	LPCPA005
10kΩ	LPCPA010
50kΩ	LPCPA050
100kΩ	LPCPA100
500kΩ	LPCPA500

MUSHROOM HEAD

SPRING RETURN

Colour	Ø22mm metal	Ø22mm chromed plastic
Ø40mm		
■	LPSB6142	LPCB6142
■	LPSB6143	LPCB6143
■	LPSB6144	LPCB6144
■	LPSB6145	LPCB6145
■	LPSB6146	LPCB6146
Ø60mm		
■	LPSB6162	LPCB6162
■	LPSB6163	LPCB6163
■	LPSB6164	LPCB6164
■	LPSB6165	LPCB6165
■	LPSB6166	LPCB6166

LATCH

Colour	Type	Ø22mm metal	Ø22mm plastic
	PULL TO RELEASE Ø40mm		
■	Normal stopping	LPSB6742	LPCB6742
■	Emergency stopping, ISO 13850 compliant	LPSB6744	LPCB6744
	TURN TO RELEASE Ø30mm		
■	Emergency stopping, ISO 13850 compliant	LPSB6634	LPCB6634
	TURN TO RELEASE Ø40mm		
■	Normal stopping	LPSB6642	LPCB6342
■	Normal stopping	—	LPCB6344
■	Emergency stopping, ISO 13850 compliant	LPSB6644	LPCB6644
	TURN KEY TO RELEASE Ø40mm		
■	Normal stopping	LPSB6842	LPCB6842
■	Emergency stopping, ISO 13850 compliant	LPSB6842R®	LPCB6842R®
■	Emergency stopping, ISO 13850 compliant	LPSB6844	LPCB6844
■	Emergency stopping, ISO 13850 compliant	LPSB6844R®	LPCB6844R®

® Versions with different key codes.
Complete with the numeric code of the key. The following versions are available: 421E, 458A, 520E, 3131A, 3433E. Example of complete code: LPCS320R421E.

BUZZERS

MONOBLOCK

Protection degree	IP40	IP66, IP67, IP69K UL Type 4X
Sound intensity at 2800Hz	90dB/10cm	80dB/10cm
CONTINUOUS OR PULSE TONE		
9...15VAC/DC	LPCZSA	LPCZSAIP
18...30VAC/DC	LPCZSB	LPCZSBIP
85...140VAC/DC	LPCZSE	LPCZSEIP
185...265AC/DC	LPCZSM	LPCZSMIP

ILLUMINATED, SPRING RETURN

Colour	Ø22mm metal	Ø22mm chromed plastic
Ø40mm		
	LPSBL6143	LPCBL6143
	LPSBL6144	LPCBL6144
	LPSBL6145	LPCBL6145
	LPSBL6146	LPCBL6146
	LPSBL6148	LPCBL6148

ILLUMINATED, LATCH

Colour	Type	Ø22mm metal	Ø22mm plastic
TURN TO RELEASE Ø40mm			
	Normal stopping	LPSBL6643	LPCBL6643
	Normal stopping	LPSBL6645	LPCBL6645
	Normal stopping	LPSBL6646	LPCBL6646
	Emergency stopping, ISO 13850 compliant	LPSBL6644	LPCBL6644

AUTO-MONITORING

Auto-monitor contact elements for non-illuminated latch mushroom-head pushbuttons

Function	Auto-monitoring
	1NC LPXC01SM
	2NC LPXC02SM

COMMUNICATION

INTERFACES

Connection	Ø30mm flat metal	Ø22mm chromed plastic
USB		
A/A female	LFPD01	LPCD01
A/A female, 0.5m long cable	LFPD01L050	LPCD01L050
A/A female, 1m long cable	LFPD01L100	LPCD01L100
A/B female	LFPD03	LPCD03
B/A female	LFPD05	LPCD05
RJ45		
Ethernet	LFPD06	LPCD06
Ethernet, 1m long cable	LFPD06L100	LPCD06L100

DOUBLE-TOUCH

SPRING RETURN

Colour	Symbol	Ø22mm metal	Ø22mm chromed plastic
2 FLUSH			
	—	LPSB7112	LPCB7112
	—	LPSB7113	LPCB7113
	—	LPSB7114	LPCB7114
	I-0	LPSB7122	LPCB7122
	I-0	LPSB7123	LPCB7123
	I-0	LPSB7124	LPCB7124
	Start/Stop	LPSB7133	LPCB7133
		LPSB7191	LPCB7191
1 FLUSH 1 EXTENDED			
	—	LPSB7212	LPCB7212
	—	LPSB7213	LPCB7213
	—	LPSB7214	LPCB7214
	I-0	LPSB7222	LPCB7222
	I-0	LPSB7223	LPCB7223
	I-0	LPSB7224	LPCB7224
	Start/Stop	LPSB7233	LPCB7233

WHITE INDICATOR, SPRING RETURN

Colour	Symbol	Ø22mm metal	Ø22mm chromed plastic
2 FLUSH			
	—	LPSBL7112	LPCBL7112
	—	LPSBL7113	LPCBL7113
	—	LPSBL7114	LPCBL7114
	I-0	LPSBL7122	LPCBL7122
	I-0	LPSBL7123	LPCBL7123
	I-0	LPSBL7124	LPCBL7124
	Start/Stop	LPSBL7133	LPCBL7133
		LPSBL7191	LPCBL7191
1 FLUSH 1 EXTENDED			
	—	LPSBL7212	LPCBL7212
	—	LPSBL7213	LPCBL7213
	—	LPSBL7214	LPCBL7214
	I-0	LPSBL7222	LPCBL7222
	I-0	LPSBL7223	LPCBL7223
	I-0	LPSBL7224	LPCBL7224
	Start/Stop	LPSBL7233	LPCBL7233

TRIPLE-TOUCH

SPRING RETURN

Symbol	Ø22mm metal	Ø22mm chromed plastic
ONE MIDDLE EXTENDED BUTTON		
	LPSB7345	LPCB7345
	LPSB7355	LPCB7355
	LPSB7365	LPCB7365
	LPSB7375	LPCB7375

JOYSTICKS

Type	N° auxiliary contacts	Ø22mm metal
WITHOUT MECHANICAL INTERLOCK COMPLETE WITH AUXILIARY CONTACTS		
	2NO	LPSJ200
	2NO	LPSJ201
	4NO	LPSJ400
	4NO	LPSJ401
WITH MECHANICAL INTERLOCK COMPLETE WITH AUXILIARY CONTACTS		
	2NO	LPSJ210
	2NO	LPSJ211
	4NO	LPSJ410
	4NO	LPSJ411

Joystick positions

	2 instable		2 stable
	4 instable		4 stable

ACCESSORIES

Description	Ø22mm metal
2-4 directional holder for adhesive legends	LPXAU101



MOUNTING ADAPTERS

Function	Ø22mm and Ø30mm metal	Ø22mm chromed plastic	
	LPXAU120M	LPXAU120	
Mounting adapters with screw termination contact elements.			
	1NO⊕	LPXE10M	LPXE10
	1NC⊖	LPXE01M	LPXE01

CONTACT ELEMENTS

Function	Screw termination	Spring-clamp termination	Faston termination	
 .3 .4	NO⊕	LPXC10	LPXCS10	LPXCF10
 .7 .8	EM⊕	LPXC10A	—	—
 .1 .2	NC⊖	LPXC01	LPXCS01	LPXCF01
 .5 .6	LB⊕⊕⊕	LPXC01D	—	—

- ⊕ Use LPXC10A (EM) or LPXC01 (NC) type only with push-push actuators. Not suitable for push-push actuators.
- ⊖ Normally open contact with early-make operation and suitable for push-push actuators.
- ⊕ Direct (positive) opening action in accordance with IEC/EN/BS 60947-5-1.
- ⊖ Normally closed contact with late break operation.

LED ELEMENTS

Total protection against overvoltages and stray currents in wiring, to reduce flickering phenomenon.				
Colour	Termination	12...30VAC/DC	48...140VAC	185...265VAC
STEADY LIGHT				
	Screw	LPXLPB3	LPXLPB3	LPXLPB3
		LPXLPB4	LPXLPB4	LPXLPB4
		LPXLPB5	LPXLPB5	LPXLPB5
		LPXLPB6	LPXLPB6	LPXLPB6
		LPXLPB8	LPXLPB8	LPXLPB8
	Spring-clamp	LPXLPB3	LPXLPB3	LPXLPB3
		LPXLPB4	LPXLPB4	LPXLPB4
		LPXLPB5	LPXLPB5	LPXLPB5
		LPXLPB6	LPXLPB6	LPXLPB6
		LPXLPB8	LPXLPB8	LPXLPB8
FLASHING LIGHT				
	Screw	LPXLPB3⊕	LPXLPB3	LPXLPB3
		LPXLPB4⊕	LPXLPB4	LPXLPB4
		LPXLPB5⊕	LPXLPB5	LPXLPB5
		LPXLPB6⊕	LPXLPB6	LPXLPB6
		LPXLPB8⊕	LPXLPB8	LPXLPB8

Simple protection against overvoltages.				
Colour	Termination	12...30 VAC/DC	48...140 VAC/DC	185...265 VAC/DC
STEADY LIGHT				
	Screw	LPXLEB3	LPXLEB3	LPXLEB3
		LPXLEB4	LPXLEB4	LPXLEB4
		LPXLEB5	LPXLEB5	LPXLEB5
		LPXLEB6	LPXLEB6	LPXLEB6
		LPXLEB8	LPXLEB8	LPXLEB8

⊕ 18...30VAC/DC

ACCESSORIES

Description	Ø22mm metal	Ø30mm flat metal	Ø22mm chromed plastic
GENERIC			
Adapter for 30mm/1.18" holes to Ø22mm/0.87" for mushroom operators	LPXA161M	—	LPXA161
Adapter for 30mm/1.18" holes to Ø22mm/0.87" for pushbuttons and selector switches	LPXA162M	—	LPXA162
Socket spanner/wrench for fixing ring fitting	—	—	LPXA200
Transparent diffuser for double-touch buttons	LPSXA127	—	LPXA127
Plastic threaded ring for actuator fixing	—	LPFXAU00	—
Plastic threaded ring for actuator fixing	—	—	LPXAU00
Metallic threaded ring for actuator fixing	—	—	LPXAU01
Threaded plug for unused drilled holes (grey)	LPXA130	LPFXA130	LPXA130
Threaded plug for unused drilled holes (black)	LPXA130B	—	LPXA130B
Adapter for mounting buttons on DIN rail 35mm/1.38" wide	LPXDIN	—	LPXDIN
Rod for mechanical reset button (l = 150mm/5.90")	LPXA150	—	LPXA150
LABEL HOLDERS AND LABELS			
Label holder for LPXAU109 and LPXAU203 labels (black)	LPXAU100	LPFXAU100	LPXAU100
Label holder for LPXAU109 and LPXAU203 labels (grey)	—	LPFXAU100G	—
Engravable silver plastic label to use with LPXAU100 holder	LPXAU109	LPXAU109	LPXAU109
Blank label for writing	LPXAU203	LPXAU203	LPXAU203
Label holder for LPXAU108 plastic labels (black)	LPXAU105	LPFXAU105	LPXAU105
Label holder for LPXAU108 plastic labels (grey)	—	LPFXAU105G	—
Engravable silver plastic label to use with LPXAU105 holder	LPXAU108	LPXAU108	LPXAU108
Legend holder for LPXAU202 paper or LPXAU201 plastic labels	LPXAU102	—	LPXAU102
Blank paper label for writing for LPXAU102	LPXAU202	—	LPXAU202
Blank plastic label for engraving for LPXAU102	LPXAU201	—	LPXAU201
Transparent protection for LPXAU202 label	LPXAU200	—	LPXAU200
PROTECTIONS			
Rubber boot for flush buttons	LPXAU13⊕	—	LPXAU13⊕
Rubber boot for extended buttons	LPXAU14⊕	—	LPXAU14⊕
Rubber boot for double and triple-touch buttons (transpar.)	LPXAU157	—	LPXAU157
Rubber boot for mushroom head buttons, LP...B63, ...B66, ...B67, ...BL66... (transparent).	LPXAU167	—	LPXAU167
Padlockable protection, 5-8mm/0.2-0.31" locks for buttons LP...B66, ...B67, ...B68, ...BL664...; for LP...B634...	LPXAU158	—	LPXAU158
Ø5-6mm/0.2-0.24" locks only	—	—	—
Shroud for buttons LP...B63..., LP...B66, ...67, ...68, ...BL666...	LPXAU159	—	LPXAU159
Protection cover for Ø22mm/0.87" plastic buttons	LPXAU170	—	LPXAU170
Protection cover for Ø22mm/0.87" communication interfaces	—	—	LPXAU171
Yellow shroud for selectors	LPXAU185	—	LPXAU185
PLASTIC DISK FOR Ø22mm MUSHROOM HEAD PUSHBUTTONS			
EMERGENZA ARRESTO Ø90mm	LPXAU112	—	LPXAU112
EMERGENZA ARRESTO Ø60mm	LPXAU114	—	LPXAU114
EMERGENCY STOP Ø90mm	LPXAU113	—	LPXAU113
EMERGENCY STOP Ø60mm	LPXAU115	—	LPXAU115
IEC60417-5638 symbol according to ISO 13850 Ø90mm/3.5"	LPXAU124	—	LPXAU124
IEC60417-5638 symbol according to ISO 13850 Ø60mm/2.4"	LPXAU123	—	LPXAU123
Adhesive label EMERGENCY STOP (34.5x65mm/1.36x2.56") for LP...B63/663/664/67/68/BL66... buttons	LPXAU110	—	LPXAU110
ARRET D'URGENCE / NOT-AUS / PARO EMERGENCIA Ø60mm	LPXAU118	—	LPXAU118

⊕ For flush and extended push buttons, complete the order code by adding the digit of the required colour: 2 (black); 3 (green); 4 (red); 5 (yellow); 6 (blue); 7 (transparent); 8 (white). For illuminated push buttons, add only digit 7 (transparent).

MOST USED TEXT LABELS

FOR LPXAU100 AND LPFXAU100... LEGEND HOLDERS

Text	Text	Text	Text	Text			
0	LPXAGB200	STOP-START	LPXAGB211	STOP	LPXAGB221	INDIETRO	LPXAI228
I	LPXAGB201	AUTO-MAN	LPXAGB212	RESET	LPXAGB222	APERTURA	LPXAI229
II	LPXAGB202	MAN-AUTO	LPXAGB213	EMERGENCY	LPXAGB223	CHIUSURA	LPXAI230
0-I	LPXAGB203	AUTO-0-MAN	LPXAGB214	ON	LPXAGB224	SALITA	LPXAI231
I-II	LPXAGB204	MAN-0-AUTO	LPXAGB215	POWER ON	LPXAGB225	DISCESA	LPXAI232
I-0-II	LPXAGB205	FWD-0-REV	LPXAGB216	OFF	LPXAGB226		
OFF-ON	LPXAGB210	START	LPXAGB220	AVANTI	LPXAI227		

PLASTIC CONTROL STATIONS

WITHOUT ACTUATORS, Ø22MM

TYPE 1, 2, 3R, 4, 4X, 12K

IP66, IP67, IP69K



Description	Cover colour	Plastic control station
1 actuator	■	LPZP1A5
1 actuator with shroud	■	LPZP1A5P
1 actuator	■	LPZP1A8
1 actuator with shroud	■	LPZP1A8P
2 actuators	■	LPZP2A5
2 actuators	■	LPZP2A8
3 actuators	■	LPZP3A8
4 actuators	■	LPZP4A8
5 actuators	■	LPZP5A8
6 actuators	■	LPZP6A8

ACCESSORIES



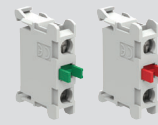
Description	
4-piece set yellow screw protection caps	LPZXP5
4-piece set grey screw protection caps	LPZXP8
M20 cable gland for LPZP... control stations	LPXP01

CONTACT ELEMENTS

FOR BASE-MOUNT ON PLASTIC

CONTROL STATION

LPZP...



Function		Screw terminals
 NO	 NC	LPXC810
		LPXC801

LED ELEMENTS

FOR BASE-MOUNT ON PLASTIC CONTROL STATION

LPZP....



Total protection against overvoltages and stray currents in wiring, to reduce flickering phenomenon.

Colour	Termination	12...30VAC/DC	85...140VAC	185...265VAC
■	■			

STEADY LIGHT

Colour	Screw termination	LPXL PBB3	LPXL PBE3	LPXL PBM3
■	■	LPXL PBB4	LPXL PBE4	LPXL PBM4
■	■	LPXL PBB5	LPXL PBE5	LPXL PBM5
■	■	LPXL PBB6	LPXL PBE6	LPXL PBM6
■	■	LPXL PBB8	LPXL PBE8	LPXL PBM8

PLASTIC COMPLETE CONTROL STATIONS

Wide availability of pre-assembled versions



Check here:



METAL CONTROL STATIONS

WITHOUT ACTUATORS, Ø22MM

IP66, IP67 - UL NEMA 4X



Description	Cover colour	Metal control station
WITH HOLES		
1 actuator	■	LPZM1A5
1 actuator with shroud	■	LPZM1A5P
1 actuator	■	LPZM1A8
2 actuators	■	LPZM2A5
2 actuators	■	LPZM2A8
3 actuators	■	LPZM3A8
4 actuators	■	LPZM4A8
5 actuators	■	LPZM5A8
6 actuators	■	LPZM6A8
MULTIHOLES		
4 actuators	■	LPZM4CA8
6 actuators	■	LPZM6CA8
8 actuators	■	LPZM8CA8
12 actuators	■	LPZM12CA8
16 actuators	■	LPZM16CA8

METAL ENCLOSURES

WITHOUT ACTUATORS

IP66, IP67 - UL NEMA 4X



Dimensions (X, Y, Z)	Cover colour	Metal enclosures
80x80x73mm	■	LPZM1E5
80x80x73mm	■	LPZM1E8
80x130x73mm	■	LPZM2E8
80x170x73mm	■	LPZM3E8
80x230x73mm	■	LPZM4E8
160x160x90mm	■	LPZM5E8
170x190x90mm	■	LPZM6E8
190x250x90mm	■	LPZM7E8



PUSHBUTTONS AND SELECTORS



ENERGY AND AUTOMATION

www.LovatoElectric.com

LOVATO ELECTRIC S.P. A.

via Don E. Mazza, 12
24020 Gorle (Bergamo), ITALY

tel +39 035 4282111
info@LovatoElectric.com

- **LOVATO ELECTRIC S.P.A.**
ITALY
www.LovatoElectric.com
- **LOVATO ELECTRIC LTD**
UNITED KINGDOM
www.Lovato.co.uk
- **LOVATO ELECTRIC CORPORATION**
CANADA
www.Lovato.ca
- **LOVATO ELECTRIC INC**
UNITED STATES
www.LovatoUsa.com
- **LOVATO ELECTRIC GmbH**
GERMANY
www.LovatoElectric.de
- **LOVATO ELECTRIC S.L.U**
SPAIN
www.LovatoElectric.es
- **LOVATO ELECTRIC. S.R.O.**
CZECH REPUBLIC
www.LovatoElectric.cz
- **LOVATO ELECTRIC SP. Z O.O.**
POLAND
www.LovatoElectric.pl
- **LOVATO ELEKTRIK LTD**
TURKEY
www.LovatoElectric.com.tr
- **LOVATO ELECTRIC ME FZE**
UNITED ARAB EMIRATES
www.LovatoElectric.ae
- **ООО Ловато Электрик**
RUSSIA
www.LovatoElectric.ru
- **LOVATO ELECTRIC CO LTD**
CHINA
www.LovatoElectric.cn
- **LOVATO ELECTRIC SRL**
ROMANIA
www.LovatoElectric.ro
- **LOVATO ELECTRIC SAS**
FRANCE
www.LovatoElectric.fr
- **LOVATO ELECTRIC AG**
SWITZERLAND
www.LovatoElectric.ch

Follow us

