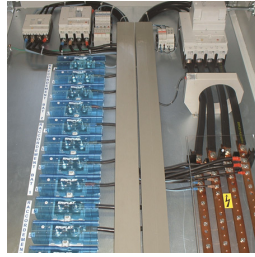
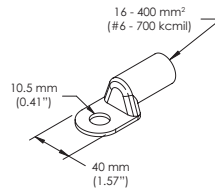
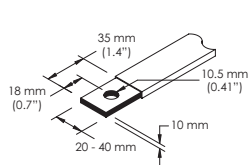
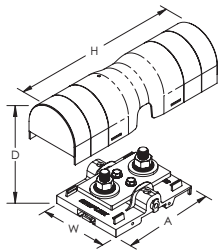


# S BLL-500 Lug-to-Lug Power Terminal – S BLL-500 (561134)



- Tinned copper block allows for copper or aluminum conductor connections
- Accessible studs allow for easy connection of sections of nVent ERIFLEX Flexibar or other conductors
- Design allows for visual inspection of conductor and confirmation of connection
- Adjustable transparent cover
- Modular snap-together blocks for building multi-pole power blocks
- Easily clips onto DIN rail or mounts to panel with screws
- SBLEC Power Terminals Fixing Accessory required for direct panel mount
- RoHS compliant
- Halogen free plastic housing excluding the blue protection cover



Part Number	S BLL-500
Article Number	561134
Material	Copper Thermoplastic
Finish	Tinned
Max Current Rating, IEC	750 A
Max Current Rating, UL/CSA	475 A
Short Term Withstand Current [I <sub>cw</sub> ] 1s	36 kA
Peak Short Circuit Current [I <sub>pk</sub> ]	51 kA
Short Circuit Current Rating [SCCR]	100 kA
Max Working Voltage, IEC (U <sub>i</sub> )	1,000 VAC 1,500 VDC
Max Working Voltage, UL (V <sub>in</sub> )	1,000 VDC
Number of Stud Connections	2
Stud Connection Conductor Width	20 – 40 mm
Stud Connection Compact Stranded Wire Size	16 – 400 mm <sup>2</sup>
Stud Connection Wire Size	#6 - 700 kcmil
Depth [D]	65 mm
Height [H]	205.7 mm
Width [W]	85.1 mm
A	108 mm

Part Number	SBLL-500
Unit Weight	0.34 kg
Certification Details	UL® 1059
Flammability Rating	UL® 94V-1
Complies With	IEC® 60947-7-1
Certifications	CE, ERIFLEX SB CSA 70044370 cURus EAC 0234267 (Russian Federation) RoHS
Standard Packaging Quantity	1 pc
UPC	78285663095
EAN-13	8711893054019

Design Guideline for Distribution Blocks, Power Blocks and Power Terminals										
Derating according to Ambient* Temperature [°C] to maintain working temperature of 85°C										
Ambient Temperature [°C]	30°	35°	40°	45°	50°	55°	60°	65°	70°	75°
Derating Coefficient (d)	1	1	1	0.94	0.88	0.82	0.75	0.67	0.58	0.47
*environment around the terminal blocks inside the enclosure										

Power terminal connections are interchangeable and can be used as line side or load side connections.  
Blue protection cover is less than 7% of the overall product weight.

CSA, CSA-US and C-CSA-US are registered trademarks of Canadian Standards Association. IEC is a registered trademark of the International Electrotechnical Commission. UL, UR, cUL, cUR, cULus and cURus are registered certification marks of UL LLC.

**WARNING**

nVent products shall be installed and used only as indicated in nVent's product instruction sheets and training materials. Instruction sheets are available at [www.erico.com](http://www.erico.com) and from your nVent customer service representative. Improper installation, misuse, misapplication or other failure to completely follow nVent's instructions and warnings may cause product malfunction, property damage, serious bodily injury and death and/or void your warranty.

© 2019 nVent All rights reserved

nVent, nVent CADDY, nVent ERICO, nVent ERIFLEX and nVent LENTON are owned by nVent or its global affiliates.

All other trademarks are the property of their respective owners. nVent reserves the right to change specifications without prior notice.