



Product designation				Motor protection relay
Product type designation				RF38
<b>General characteristics</b>				
Number of poles	nr.			3
Overvoltage category				III
Pollution degree				3
Frontal IP degree				IP20
Type of release				Thermal
Protection fuse				
		gG (IEC)	A	6 A
		aM (IEC)	A	4 A
		RK5 (UL)	A	15 A
Phase failure detection				NO
Reset mode				Manual or automatic
<b>Power circuit characteristics</b>				
Operating frequency		Operational frequency max	Hz	400 1/s
Operating current		Operational current min	A	2.5 A
		Operational current max	A	4 A
Tripping class				10A
Test Button				YES
Trip indicator				YES
Terminals		type	Screw and washer	
		screw	M4	
		tool	Phillips 2	
Conductor section		AWG max	8	
<b>Auxiliary circuit characteristics</b>				
Auxiliary contacts		NO	nr.	1
		NC	nr.	1
Operating current AC15		24V	A	3 A
		120V	A	3 A
		240V	A	1.5 A
		380V	A	0.95 A
		480V	A	0.75 A
		500V	A	0.72 A
		600V	A	0.6 A
Operating current DC13				

	125V	A	0.11 A
	600V	A	0.22 A
Conventional free air thermal current I <sub>th</sub>		A	10 A

Terminals

type	Screw and washer
screw	M3,5
tool	Phillips 2

UL/CSA and IEC/EN 60947-5-1 designation	B600-R300
---	-----------

**Ambient conditions**

Max altitude	m	3000
--------------	---	------

**Mechanical features**

Operating position	normal allowable	Vertical plan ±30°
--------------------	------------------	--------------------

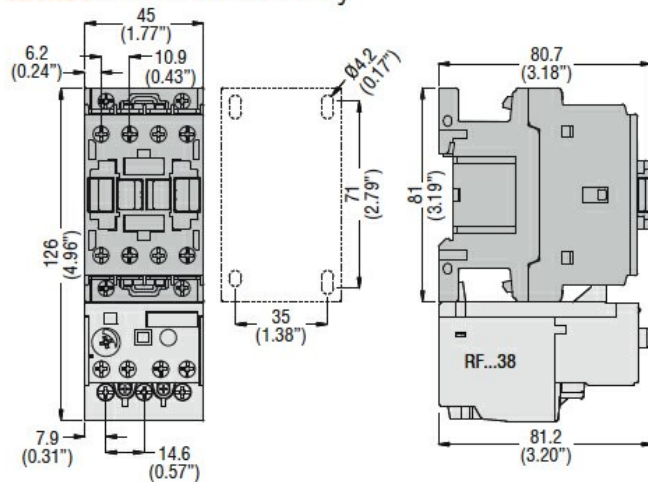
Weight	g	0.16 kg
--------	---	---------

**UL technical data**

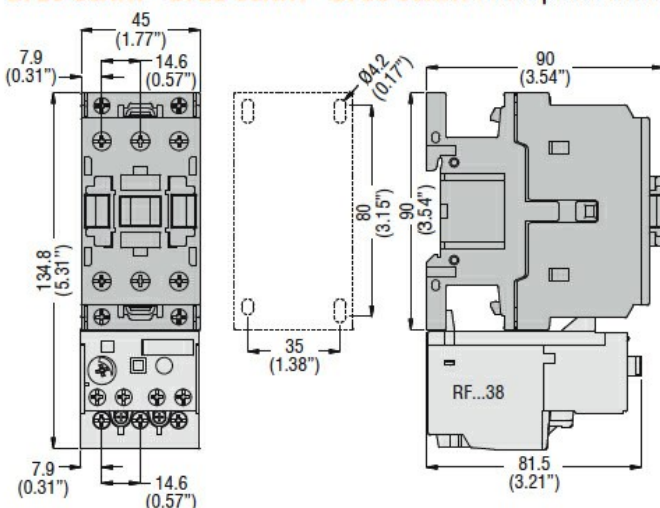
Full-load current (FLA) for three-phase AC motor	at 480V	A	4 A
	at 600V	A	4 A

**Dimensions**

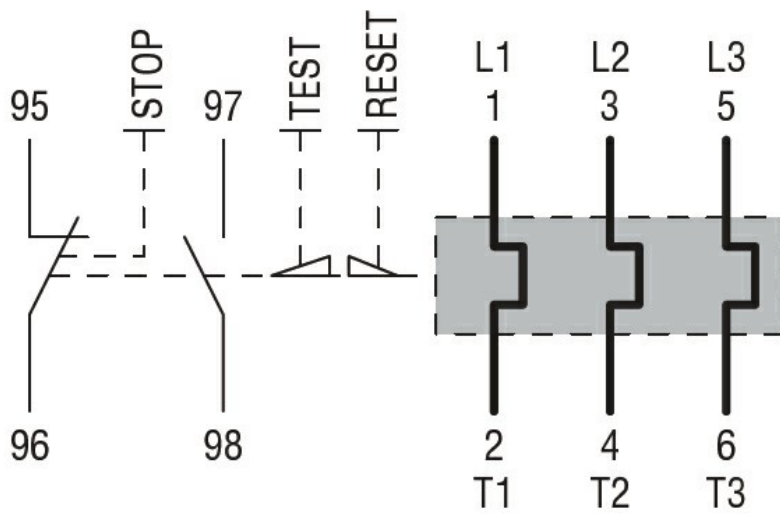
**BF00 A... BF09 A... - BF12 A... - BF18 A... - BF25 A...** three poles with **RF...38** thermal overload relay



**BF26 00A... - BF32 00A... - BF38 00A...** three poles with **RF...38** thermal overload relay



**Wiring diagrams**



### Certifications and compliance

#### Compliance

CSA C22.2 n° 14  
IEC/EN 60947-1  
IEC/EN 60947-4-1  
UL508

#### Certifications

CCC  
cULus  
EAC