



Product designation				Motor protection relay
Product type designation				RF38
<b>General characteristics</b>				
Number of poles	nr.			3
Overvoltage category				III
Pollution degree				3
Frontal IP degree				IP20
Type of release				Thermal
Protection fuse				
	gG (IEC)	A		16 A
	aM (IEC)	A		8 A
	RK5 (UL)	A		25 A
Phase failure detection				NO
Reset mode				Manual or automatic
<b>Power circuit characteristics</b>				
Operating frequency				
	Operational frequency max	Hz		400 1/s
Operating current				
	Operational current min	A		4 A
	Operational current max	A		6.5 A
Tripping class				10A
Test Button				YES
Trip indicator				YES
Terminals				
	type			Screw and washer
	screw			M4
	tool			Phillips 2
Conductor section				
	AWG max			8
<b>Auxiliary circuit characteristics</b>				
Auxiliary contacts				
	NO	nr.		1
	NC	nr.		1
Operating current AC15				
	24V	A		3 A
	120V	A		3 A
	240V	A		1.5 A
	380V	A		0.95 A
	480V	A		0.75 A
	500V	A		0.72 A
	600V	A		0.6 A
Operating current DC13				

	125V	A	0.11 A
	600V	A	0.22 A
Conventional free air thermal current Ith		A	10 A

Terminals

type	Screw and washer
screw	M3,5
tool	Phillips 2

UL/CSA and IEC/EN 60947-5-1 designation	B600-R300
---	-----------

**Ambient conditions**

Max altitude	m	3000
--------------	---	------

**Mechanical features**

Operating position	normal allowable	Vertical plan ±30°
--------------------	------------------	--------------------

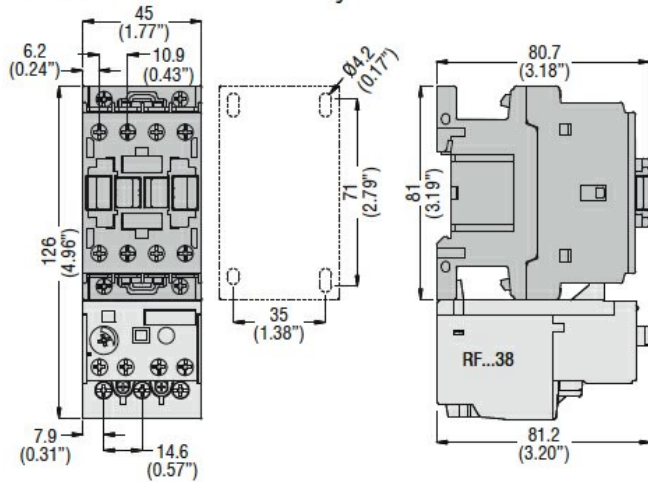
Weight	g	0.16 kg
--------	---	---------

**UL technical data**

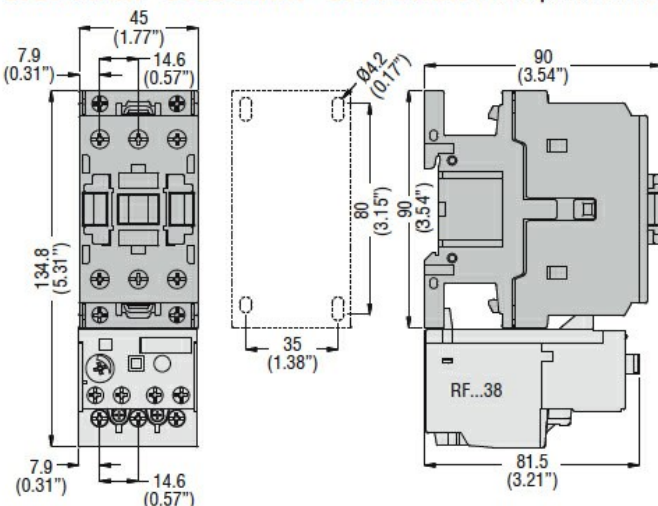
Full-load current (FLA) for three-phase AC motor	at 480V	A	6.5 A
	at 600V	A	6.5 A

**Dimensions**

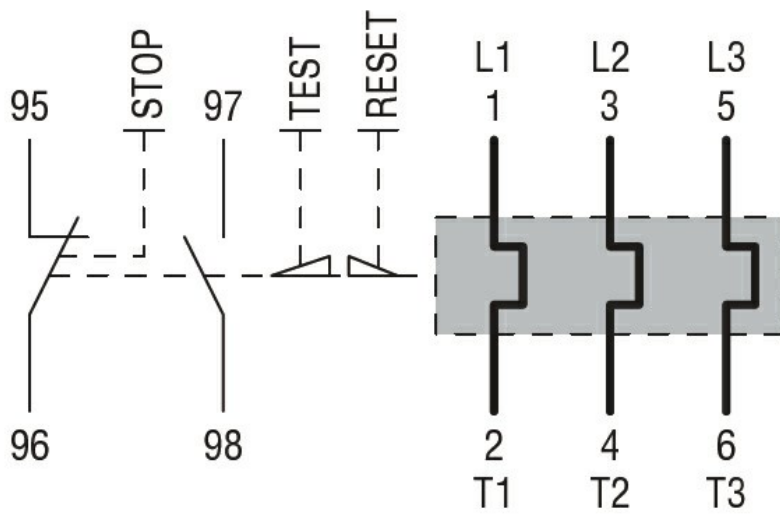
**BF00 A... BF09 A... - BF12 A... - BF18 A... - BF25 A... three poles with RF...38 thermal overload relay**



**BF26 00A... - BF32 00A... - BF38 00A... three poles with RF...38 thermal overload relay**



**Wiring diagrams**



### Certifications and compliance

#### Compliance

CSA C22.2 n° 14

IEC/EN 60947-1

IEC/EN 60947-4-1

UL508

#### Certifications

CCC

cULus

EAC