



Product designation				Motor protection relay
Product type designation				RF38
<b>General characteristics</b>				
Number of poles	nr.			3
Overvoltage category				III
Pollution degree				3
Frontal IP degree				IP20
Type of release				Thermal
Protection fuse				
	gG (IEC)	A	50 A	
	aM (IEC)	A	25 A	
	RK5 (UL)	A	90 A	
Phase failure detection				NO
Reset mode				Manual or automatic
<b>Power circuit characteristics</b>				
Operating frequency	Operational frequency max	Hz	400 1/s	
Operating current	Operational current min	A	17 A	
	Operational current max	A	23 A	
Tripping class				10A
Test Button				YES
Trip indicator				YES
Terminals	type	Screw and washer		
	screw	M4		
	tool	Phillips 2		
Conductor section	AWG max	8		
<b>Auxiliary circuit characteristics</b>				
Auxiliary contacts	NO	nr.	1	
	NC	nr.	1	
Operating current AC15	24V	A	3 A	
	120V	A	3 A	
	240V	A	1.5 A	
	380V	A	0.95 A	
	480V	A	0.75 A	
	500V	A	0.72 A	
	600V	A	0.6 A	
Operating current DC13				

	125V	A	0.11 A
	600V	A	0.22 A
Conventional free air thermal current I <sub>th</sub>		A	10 A

Terminals

type	Screw and washer
screw	M3,5
tool	Phillips 2

UL/CSA and IEC/EN 60947-5-1 designation	B600-R300
-----------------------------------------	-----------

**Ambient conditions**

Max altitude	m	3000
--------------	---	------

**Mechanical features**

Operating position	normal allowable	Vertical plan ±30°
--------------------	------------------	--------------------

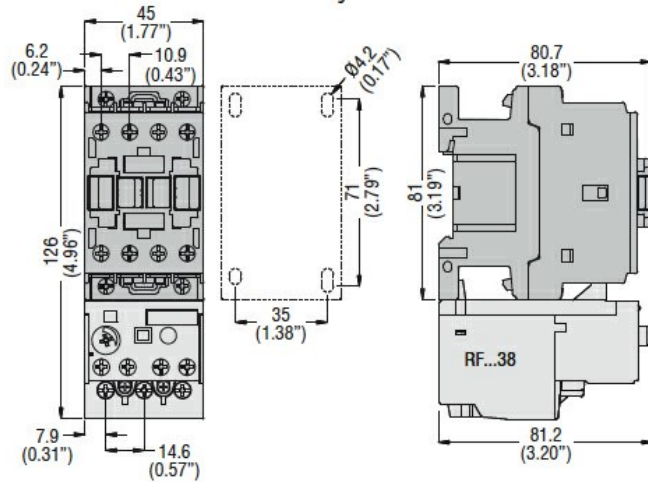
Weight	g	0.16 kg
--------	---	---------

**UL technical data**

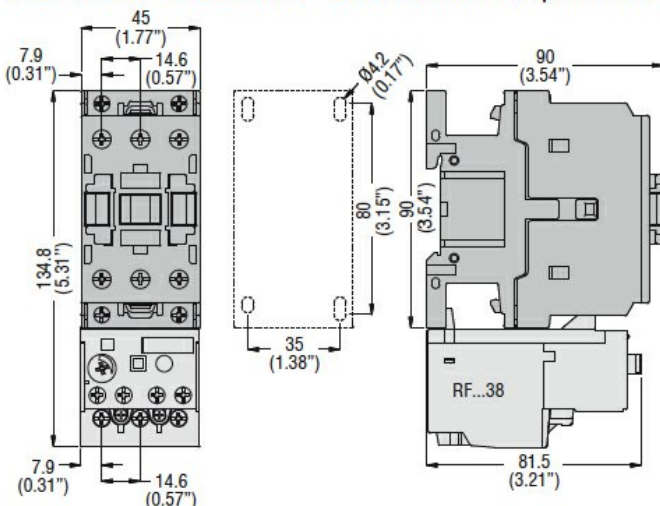
Full-load current (FLA) for three-phase AC motor	at 480V	A	23 A
	at 600V	A	23 A

**Dimensions**

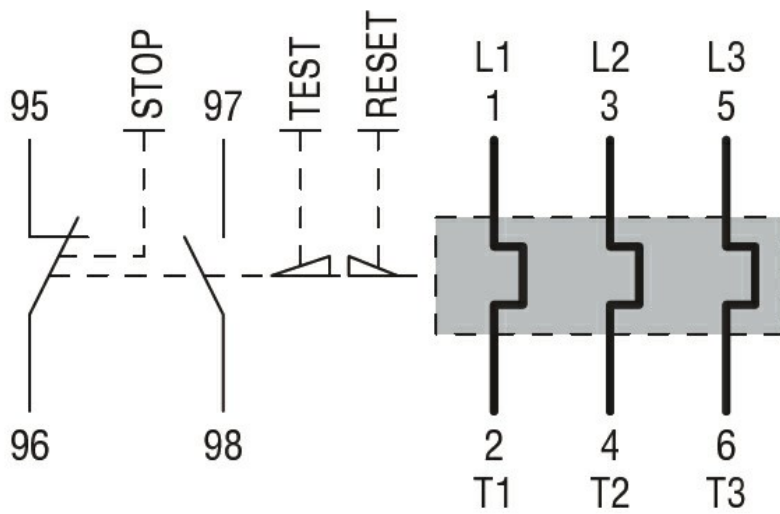
**BF00 A... BF09 A... - BF12 A... - BF18 A... - BF25 A... three poles with RF...38 thermal overload relay**



**BF26 00A... - BF32 00A... - BF38 00A... three poles with RF...38 thermal overload relay**



**Wiring diagrams**



### Certifications and compliance

#### Compliance

CSA C22.2 n° 14

IEC/EN 60947-1

IEC/EN 60947-4-1

UL508

#### Certifications

CCC

cULus

EAC