



| | | | | |
|--|-----|---------------------------|------------------|------------------------|
| Product designation | | | | Motor protection relay |
| Product type designation | | | | RF38 |
| General characteristics | | | | |
| Number of poles | nr. | | | 3 |
| Overvoltage category | | | | III |
| Pollution degree | | | | 3 |
| Frontal IP degree | | | | IP20 |
| Type of release | | | | Thermal |
| Protection fuse | | | | |
| | | gG (IEC) | A | 63 A |
| | | aM (IEC) | A | 40 A |
| | | RK5 (UL) | A | 150 A |
| Phase failure detection | | | | NO |
| Reset mode | | | | Manual or automatic |
| Power circuit characteristics | | | | |
| Operating frequency | | Operational frequency max | Hz | 400 1/s |
| Operating current | | Operational current min | A | 32 A |
| | | Operational current max | A | 38 A |
| Tripping class | | | | 10A |
| Test Button | | | | YES |
| Trip indicator | | | | YES |
| Terminals | | type | Screw and washer | |
| | | screw | M4 | |
| | | tool | Phillips 2 | |
| Conductor section | | AWG max | 8 | |
| Auxiliary circuit characteristics | | | | |
| Auxiliary contacts | | NO | nr. | 1 |
| | | NC | nr. | 1 |
| Operating current AC15 | | 24V | A | 3 A |
| | | 120V | A | 3 A |
| | | 240V | A | 1.5 A |
| | | 380V | A | 0.95 A |
| | | 480V | A | 0.75 A |
| | | 500V | A | 0.72 A |
| | | 600V | A | 0.6 A |
| Operating current DC13 | | | | |

| | | | |
|---|------|---|--------|
| | 125V | A | 0.11 A |
| | 600V | A | 0.22 A |
| Conventional free air thermal current I _{th} | | A | 10 A |

Terminals

| | |
|-------|------------------|
| type | Screw and washer |
| screw | M3,5 |
| tool | Phillips 2 |

| | |
|---|-----------|
| UL/CSA and IEC/EN 60947-5-1 designation | B600-R300 |
|---|-----------|

Ambient conditions

| | | |
|--------------|---|------|
| Max altitude | m | 3000 |
|--------------|---|------|

Mechanical features

| | | |
|--------------------|------------------|--------------------|
| Operating position | normal allowable | Vertical plan ±30° |
|--------------------|------------------|--------------------|

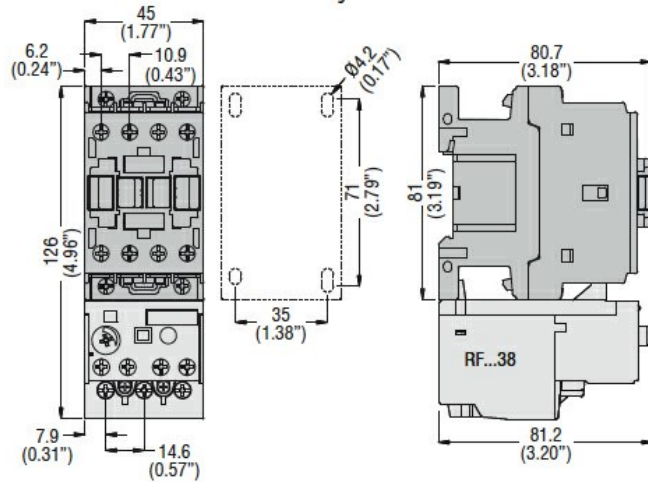
| | | |
|--------|---|---------|
| Weight | g | 0.16 kg |
|--------|---|---------|

UL technical data

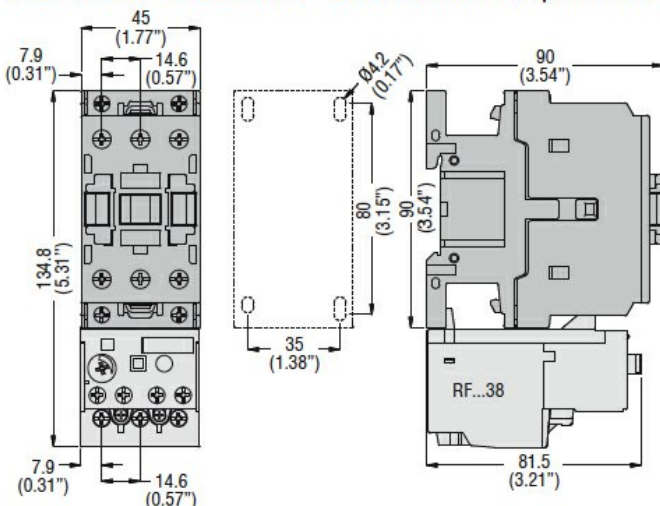
| | | | |
|--|---------|---|------|
| Full-load current (FLA) for three-phase AC motor | at 480V | A | 38 A |
| | at 600V | A | 38 A |

Dimensions

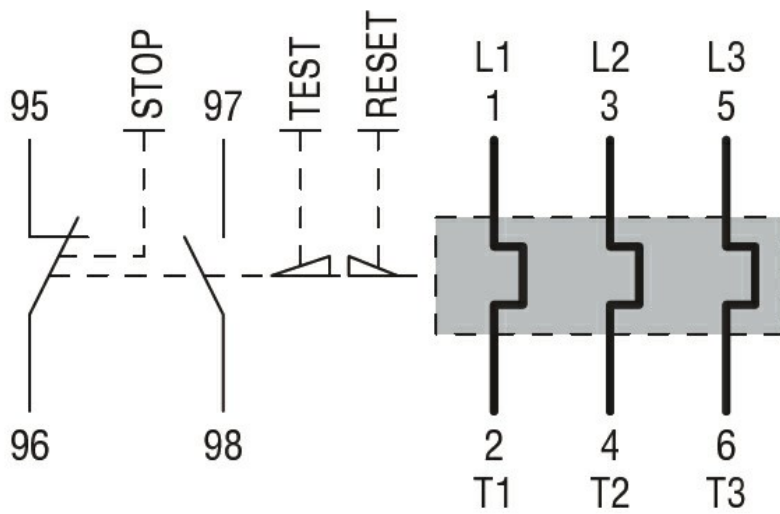
BF00 A... BF09 A... - BF12 A... - BF18 A... - BF25 A... three poles with RF...38 thermal overload relay



BF26 00A... - BF32 00A... - BF38 00A... three poles with RF...38 thermal overload relay



Wiring diagrams



Certifications and compliance

Compliance

CSA C22.2 n° 14

IEC/EN 60947-1

IEC/EN 60947-4-1

UL508

Certifications

CCC

cULus

EAC