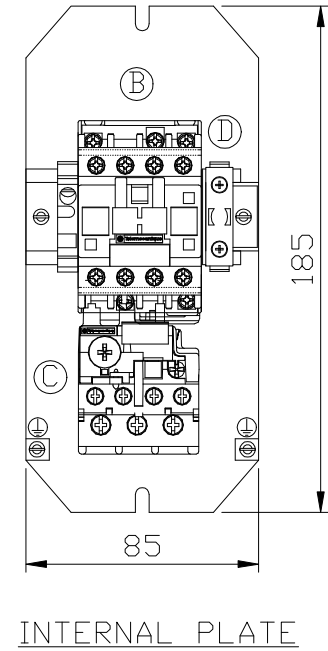
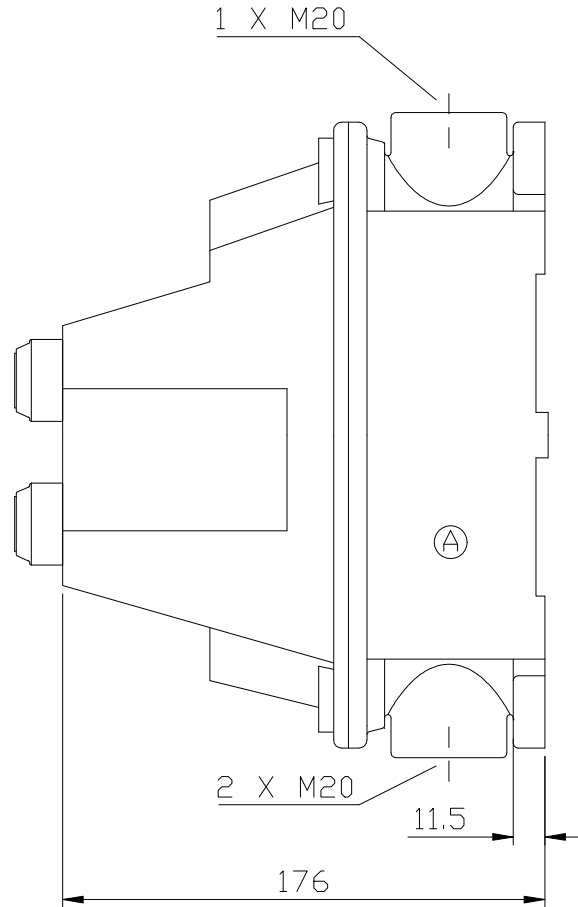
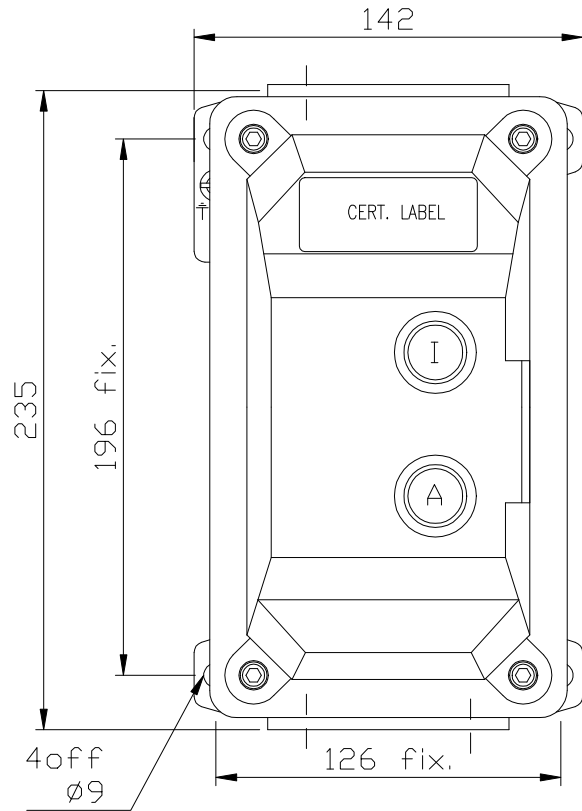


ITEM	QTY	DESCRIPTION	PART No	SUPPLIER
A	1	ENCLOSURE	931 14	A.T.X.
B	1	4kW CONTACTOR	LC1-D09 N7	TELEMECANIQUE
C	1	OVERLOAD UNIT 9-13A	LRD-14	TELEMECANIQUE
D	1	START CONTACT BLOCK N/O	M22-KC10	KLOCKNER MOELLER



ENCLOSURE TYPE CF2D Cat No 931 14

All dimensions in millimeters  
 EEx'd II-B T6 Certified to CENELEC EN 50 014/18 & IEC 79-0/1  
 Protection index : IP66 according to NF C 20-010 and IEC 529  
 Material : Aluminium , Grey paint RAL 7035  
 Climatic protection : All climates as NFA 91-011  
 Weight : 4 kg  
 CAD Ref: Blank 931 14

ITEM	COLOUR	DEVICE	INSCRIPTION
------	--------	--------	-------------

						<b>TITLE</b>		<b>QTY:</b>		<b>SCALE:</b>	
						931 14 DOL STARTER		A/R		NTS	
						<b>CLIENT</b>				<b>DATE:</b>	
						-				16/02/07	
		<b>0</b>		<b>FIRST ISSUE</b>		<b>DB</b>	16/02/07	<b>PJ</b>	16/02/07	<b>JOB NUMBER:</b>	
		<b>ISSUE</b>		<b>CHANGES</b>		<b>BY</b>	<b>DATE</b>	<b>CHK</b>	<b>DATE</b>	<b>CLIENT ORDER No:</b>	
										-	
										<b>DRG No.</b>	
										931 14 DOL-A4	