

# ENERGY METERS



  
**electric**

ENERGY AND AUTOMATION

## For efficient management of energy consumption |

In a global scenario in which energy must be monitored and managed efficiently, LOVATO Electric presents its updated series of energy meters for single and three-phase systems. Compatibility with the EXM... type expansion modules and the availability of a data concentrator allow LOVATO Electric energy meters to connect with the most common communication systems (USB, RS232, RS485, M-BUS and Ethernet).



### EXPANDABILITY

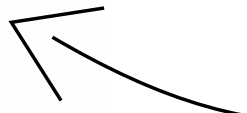
Input/output and communication modules

### COMMUNICATION

Modbus via RS232 or RS485, Ethernet or M-BUS

# DME

Series



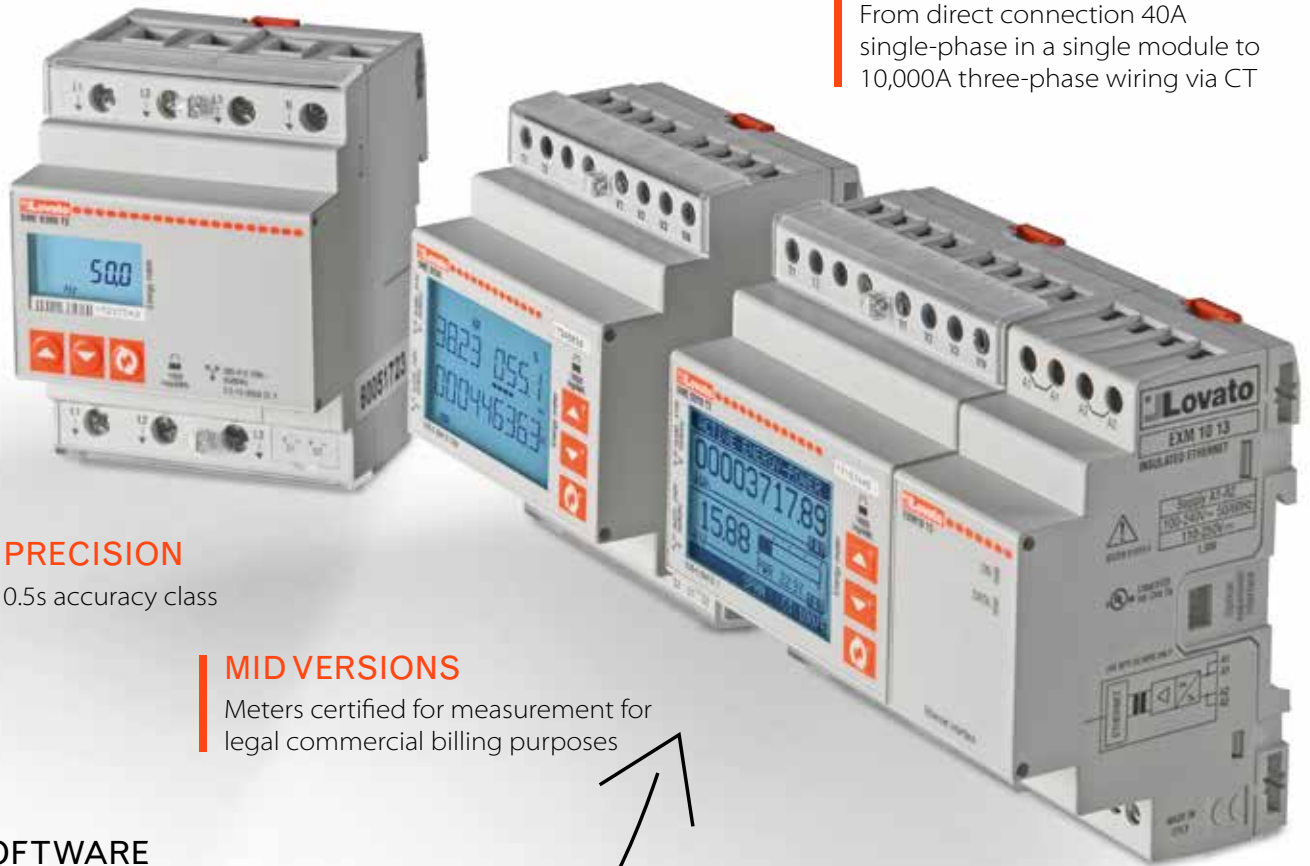
Street lighting



Retail



Industry



## COMPLETE RANGE

From direct connection 40A single-phase in a single module to 10,000A three-phase wiring via CT

## PRECISION

0.5s accuracy class

## MID VERSIONS

Meters certified for measurement for legal commercial billing purposes

## SOFTWARE

Monitoring, configuration and remote control for energy management

## EASE OF USE

Backlight graphic display



**Xpress**  
**Synergy**



Photovoltaic

- total and partial energy meters (resettable)
- expandable versions with memory device for data logger, Ethernet communication and relay outputs for load disconnection
- versions with programmable output for energy pulses or alarm thresholds
- tariff selection input
- 4-quadrant measurements
- MID, RCM and EAC certified versions.

220...  
240  
VAC

# > SINGLE-PHASE



- rated supply voltage: 220...240VAC
- operating limit: 187...264VAC
- active energy measurement and accuracy:
  - standard version: class 1 (IEC/EN 62053-21)
  - MID-certified version: class B (EN 50470-3)
- reactive energy measurement and accuracy: class 2 (IEC/EN 62053-23)
- flashing metrological LED for energy consumption indication
- terminal covers that can be sealed included
- protection rating: IP40 on front, IP20 on terminals
- multi-measurement.



SINGLE-PHASE WITH DIRECT WIRING		DME D100 T1	DME D110 T1	DME D115 T1	DME D120 T1	DME D121	DME D122	DME D130 LM
<b>Maximum current</b>		40A	40A	40A	63A	63A	63A	63A
<b>Display</b>	Vertical, not backlight	■	■					
	Horizontal, backlight			■	■	■	■	■
<b>Measurement</b>	kWh	■						
	kWh, kW with average and max. demand			■				
	kWh, kvarh, kW with average and max. demand, kvar, V, I, Hz, PF, total and partial hour counter		■		■	■	■	■
<b>Interface</b>	Pulse output	■						
	Programmable output (pulses/thresholds)		■	■	■			
	Built-in Modbus RTU (RS485)					■		
	Built-in M-BUS						■	
<b>MID version availability</b>		■	■		■	■	■	
<b>Load management</b>								■
<b>Compatibility with Synergy, Synergy Cloud and Xpress software</b>						■		

380...  
415  
VAC

## > THREE-PHASE



- rated supply voltage: 380...415VAC (L-L)
- operating limit: 323...456VAC (L-L)
- active energy measurement and accuracy:
  - standard version, direct connection: class 1 (IEC/EN 62053-21)
  - standard version, connection via CT: class 0.5s (IEC/EN 62053-22)
  - MID-certified version: class B (EN 50470-3)
- reactive energy measurement and accuracy: class 2 (IEC/EN 62053-23)
- flashing metrological LED for energy consumption indication
- terminal covers that can be sealed included
- protection rating: IP40 on front, IP20 on terminals
- multi-measurement
- tariff selection input.

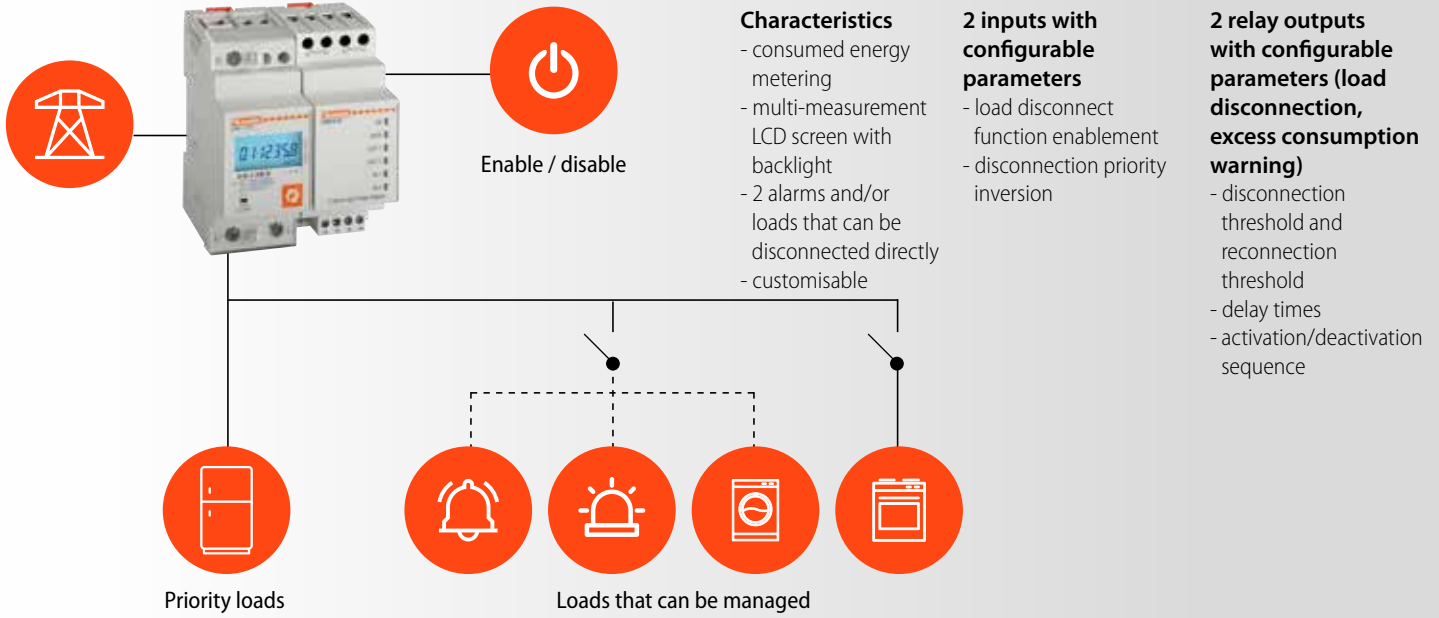


THREE-PHASE		DME D300 T2	DME D301	DME D302	DME D305 T2	DME D330	DME D332	DME D310 T2
<b>Maximum current</b>		80A	80A	80A	CT /5 or CT /1	CT /5 or CT /1	CT /5 or CT /1	CT /5
<b>Connection type</b>	Direct	■	■	■				
	Via CT				■	■	■	■
<b>Interface</b>	Programmable output (pulses/thresholds)	■			■			■
	Built-in Modbus RTU (RS485)		■			■		
	Built-in M-BUS			■			■	
<b>Expandability</b>	Communication (RS485, Ethernet, USB)							■
	Relay outputs for load disconnection							■
	Data memory (data logger)							■
<b>MID version availability*</b>		■	■	■	■	■	■	■
<b>Compatibility with Synergy, Synergy Cloud and Xpress software</b>			■			■		■

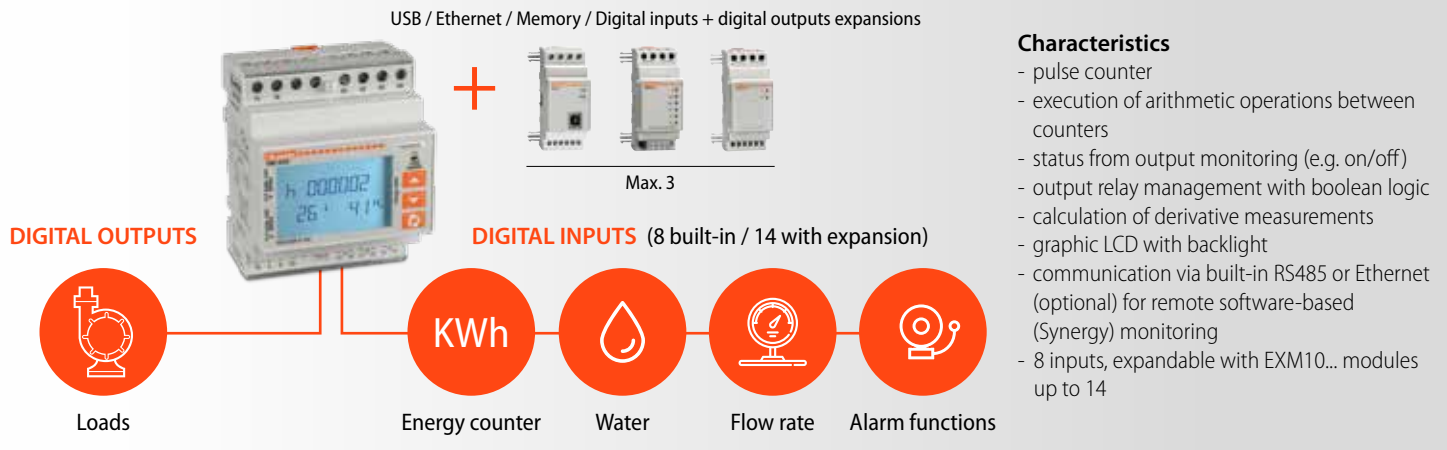
\* UTF-certified versions are available on request

**APPLICATION EXAMPLES**

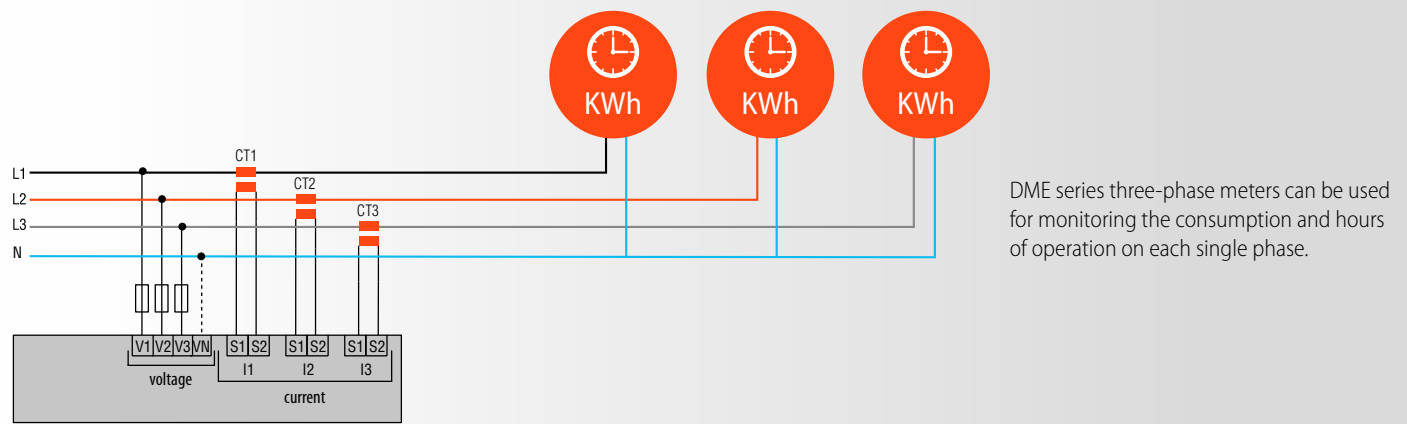
**DME D130 LM multi-measurement for load management: avoid disconnection due to excess consumption**



**DME CD: smart expandable data concentrator with built-in RS485**



**THREE-PHASE VERSIONS: monitoring energies of each phase with dedicated hour counters**



## ORDER CODES

### Single-phase

Order code	Maximum current	Size	Accuracy class	Interface
<b>DME D100 T1</b>	40A	1U	1	1 pulse output
<b>DME D110 T1</b>	40A	1U	1	1 programmable output
<b>DME D115 T1</b>	40A	2U	1	1 programmable output
<b>DME D120 T1</b>	63A	2U	1	1 programmable output
<b>DME D121</b>	63A	2U	1	RS485
<b>DME D122</b>	63A	2U	1	M-BUS
<b>DME D130 LM</b>	63A	4U	1	Relay outputs

#### MID versions

<b>DME D100 T1MID</b>	40A	1U	B	1 pulse output
<b>DME D110 T1MID</b>	40A	1U	B	1 programmable output
<b>DME D120 T1MID</b>	63A	2U	B	1 programmable output
<b>DME D121 MID</b>	63A	2U	B	RS485
<b>DME D122 MID</b>	63A	2U	B	M-BUS

### Three-phase

Order code	Maximum current	Size	Accuracy class	Interface
<b>DME D300 T2</b>	80A	4U	1*	2 programmable outputs
<b>DME D301</b>	80A	4U	1*	RS485
<b>DME D302</b>	80A	4U	1*	M-BUS
<b>DME D305 T2</b>	CT /5 or /1	4U	0.5s	2 programmable outputs
<b>DME D330</b>	CT /5 or /1	4U	0.5s	RS485
<b>DME D332</b>	CT /5 or /1	4U	0.5s	M-BUS
<b>DME D310 T2</b>	CT /5	4U	1	2 programmable outputs

#### MID versions

<b>DME D300 T2MID</b>	80A	4U	B	2 programmable outputs
<b>DME D301 MID</b>	80A	4U	B	RS485
<b>DME D302 MID</b>	80A	4U	B	M-BUS
<b>DME D305 T2MID</b>	CT /5 or /1	4U	B	2 programmable outputs
<b>DME D330 MID</b>	CT /5 or /1	4U	B	RS485
<b>DME D332 MID</b>	CT /5 or /1	4U	B	M-BUS
<b>DME D310 T2MID</b>	CT /5	4U	B	2 programmable outputs

\* Class 1 according to IEC/EN 62053-21, accuracy measured in the 0.75A-80A range: **0.5%**

### Certifications



UTF-certified versions are available on request

### Data concentrator

Order code	Size	Interface	Input number	Expandability
<b>DME CD</b>	4U	RS485	8 built-in	max. 3 EXM expansions

### Expansions for DME D310 T2 and DME CD

Order code	Description
<b>EXM10 00</b>	2 digital inputs and 2 static outputs, opto-isolated
<b>EXM10 01</b>	2 opto-isolated digital inputs and 2 relay outputs 5A 250VAC
<b>EXM10 02</b>	4 opto-isolated digital inputs and 2 relay outputs 5A 250VAC
<b>EXM10 10</b>	Opto-isolated USB interface
<b>EXM10 11</b>	Opto-isolated RS232 interface
<b>EXM10 12</b>	Opto-isolated RS485 interface
<b>EXM10 13</b>	Ethernet interface with Web server function
<b>EXM10 20</b>	Opto-isolated RS485 interface and 2 relay outputs 5A 250VAC
<b>EXM10 30</b>	Data storage, RTC with backup battery for data logging



EXM10 00 | EXM10 01  
EXM10 02  
Digital inputs and outputs



EXM10 10 | EXM10 11  
EXM10 12 | EXM10 20  
USB, RS232, RS485  
communication



EXM10 13  
Ethernet communication



EXM1030  
Data logger

### Accessories



DM  
Current transformers  
50A to 4000A



EXC M3G 01  
2G/3G modem



EXC CON 01  
RS485-Ethernet converter

## SOFTWARE

Software for energy monitoring and efficiency.

Read the energy efficiency brochure to find out more!  
Scan this QR code with your smartphone.

Configuration and remote control software.



Energy  
Management



DMG



Visit [EM.LOVATOELECTRIC.COM](http://EM.LOVATOELECTRIC.COM)

■ **LOVATO ELECTRIC LTD**

Lovato House - Providence Drive Lye  
STOURBRIDGE  
West Midlands - DY9 8HQ - ENGLAND  
Tel. +44 01384 899700  
sales@Lovato.co.uk  
www.Lovato.co.uk

■ **LOVATO ELECTRIC GmbH**

Im Ermlisgrund 30  
76337 WALDBRONN  
GERMANY  
Tel. +49 7243 766 937 0  
info@LovatoElectric.de  
www.LovatoElectric.de

■ **LOVATO ELECTRIC SP. Z O.O.**

ul. Zachodnia 3  
55-330 Błonie k. Wrocławia  
POLAND  
Tel. +48 71 7979010  
info@LovatoElectric.pl  
www.LovatoElectric.pl

ООО Ловато Электрик

107023, г. Москва  
ул. Суворовская, д.19, стр. 2,  
RUSSIA  
Тел: +7 (495) 998-50-80  
info@LovatoElectric.ru  
www.LovatoElectric.ru

■ **LOVATO ELECTRIC SAS**

IMMEUBLE DANICA B  
21 Avenue Georges Pompidou  
FRANCE  
Tel. +33 4 72 91 31 35  
info@LovatoElectric.fr  
www.LovatoElectric.fr

■ **LOVATO ELECTRIC CORPORATION**

4500, Garand Street  
Laval, Quebec CANADA  
H7L 5Z6  
Tel. +579-641-1253  
info@Lovato.ca  
www.Lovato.ca

■ **LOVATO ELECTRIC S.L.U**

Pol. Ind. Llinars Park  
C/. de la Tecnología, 102  
Passatge B, Nau 9  
08450 LLINARS DEL VALLÈS - SPAIN  
Tel. +34 93 7812016  
LovatoElectric@LovatoElectric.es  
www.LovatoElectric.es

■ **LOVATO ELEKTRIK LTD**

Araylar Sanayi Sitesi  
No:9A/36 Özvatan Caddesi  
Tepeören Mahallesi 34959 Tuzla  
Istanbul, TURKEY  
Tel. +90 216 499 86 86  
info@LovatoElectric.com.tr  
www.LovatoElectric.com.tr

**LOVATO ELECTRIC CO LTD**

Shanghai, CHINA  
上海市虹井路288号燎申虹桥国  
际中心B座701单元  
邮编: 201103  
电话: +86 021 62961837  
info@LovatoElectric.cn  
www.LovatoElectric.cn

■ **LOVATO ELECTRIC INC**

2017 Georgetown Blvd.  
CHESAPEAKE, VA 23325  
UNITED STATES  
Tel. +1 757 545-4700  
info@LovatoUsa.com  
www.LovatoUsa.com

■ **LOVATO ELECTRIC. S.R.O.**

Cizovska 488  
397 01 PISEK  
CZECH REPUBLIC  
Tel. +420 226 203210  
Lovato@LovatoElectric.cz  
www.LovatoElectric.cz

■ **LOVATO ELECTRIC ME FZE**

#A101-9, First Floor, Block A  
DSO-Operations and Facility Centre  
DUBAI SILICON OASIS  
Dubai, UAE  
Tel. +971 4 371 2713  
info@lovatoelectric.ae  
www.LovatoElectric.ae

■ **LOVATO ELECTRIC SRL**

Muntenia Business Center,  
Splaiul Unirii nr. 16, et. 6, cam. 601  
RO-040035, sector 4,  
Bucarest, ROMANIA  
Tel. +40 372 074 155  
info@LovatoElectric.ro  
www.LovatoElectric.ro



ENERGY AND AUTOMATION

[www.LovatoElectric.com](http://www.LovatoElectric.com)

**LOVATO ELECTRIC S.P. A.**

Via Don E. Mazza, 12  
24020 Gorle (Bergamo), Italy  
tel. +39 035 4282111  
info@LovatoElectric.com

Follow us on



The products described in this document are subject to updates or modifications at any time. The descriptions, technical and functional information, illustrations and instructions in the leaflet are to be considered as purely illustrative, and consequently have no contractual relevance. Remember also that the products themselves must be used by qualified personnel, in compliance with current plant engineering and installation standards, in order to avoid injury to persons or damage to property.